

Anti-Phospho-IP3R (Ser1756) Rabbit pAb

Purified Rabbit Polyclonal Antibody

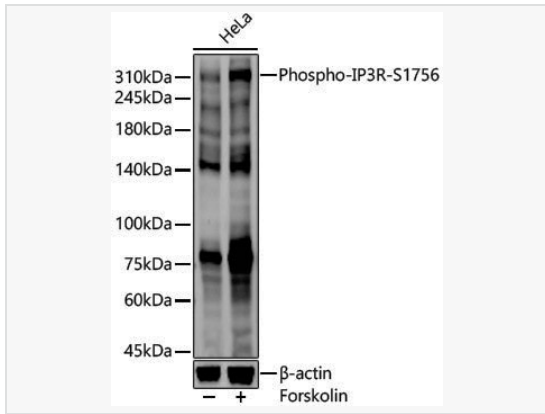
Catalog # P109009

Product Information

Application	WB, ELISA
Reactivity	Human
Dilution	WB 1:100~1:500
Host	Rabbit
Clonality	Polyclonal
Isotype	IgG
Label	Unconjugated
Immunogen	A synthetic phosphorylated peptide around S1756 of human ITPR1 (XP_011531986.1).
Format	Affinity purified polyclonal antibody supplied in PBS with 0.02% sodium azide and 50% glycerol, pH 7.3.
Storage	Shipped on wet ice. Store at -20°C. Stable for 24 months from date of receipt. Aliquoting is unnecessary for -20°C storage.
Precautions	Anti-Phospho-IP3R (Ser1756) Rabbit pAb is for research use only and not for use in diagnostic or therapeutic procedures.

Protein Information

Synonyms	ACV; CLA4; IP3R; IP3R1; SCA15; SCA16; SCA29; INSP3R1; PPP1R94; Phospho-IP3R-S1756.
Calculated MW	Calculated MW: 314 kDa; Observed MW: 320 kDa
Uniprot ID	Q14643
Gene ID	3708
Background	This gene encodes an intracellular receptor for inositol 1,4,5-trisphosphate. Upon stimulation by inositol 1,4,5-trisphosphate, this receptor mediates calcium release from the endoplasmic reticulum. Mutations in this gene cause spinocerebellar ataxia type 15, a disease associated with an heterogeneous group of cerebellar disorders. Multiple transcript variants have been identified for this gene.



Western blot analysis of various lysates, using Phospho-IP3R-S1756 Rabbit pAb (P109009) at 1:400 dilution. HeLa cells were treated by Forskolin (10 uM) at 37°C for 1 hour after serum-starvation overnight.

Secondary antibody: HRP-conjugated Goat anti-Rabbit IgG (H+L) (LF102) at 1:10,000 dilution.

Lysates/proteins: 25µg per lane.

Blocking buffer: 3% nonfat dry milk in TBST.

Detection: ECL Kit (SQ201).

Exposure time: 30s.