

Anti-ADAM15 Rabbit pAb

Purified Rabbit Polyclonal Antibody

Catalog # P107786

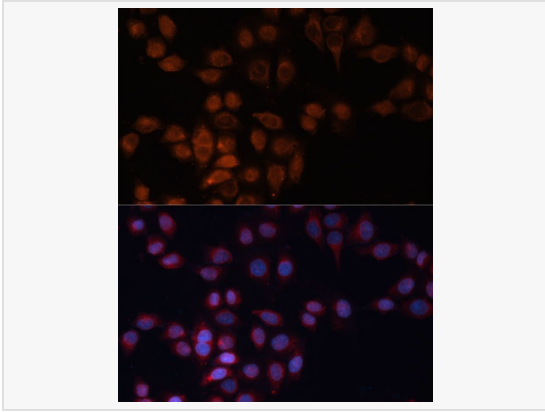
Product Information

Application	WB, IF (Cell)/ICC, ELISA
Reactivity	Human, Mouse, Rat
Dilution	WB 1:500~1:2,000; IF 1:50~1:200
Host	Rabbit
Clonality	Polyclonal
Isotype	IgG
Label	Unconjugated
Immunogen	Recombinant fusion protein containing a sequence corresponding to amino acids 540-700 of human ADAM15 (NP_003806.3).
Format	Affinity purified polyclonal antibody supplied in PBS with 0.02% sodium azide and 50% glycerol, pH 7.3.
Storage	Shipped on wet ice. Store at -20°C. Stable for 24 months from date of receipt. Aliquoting is unnecessary for -20°C storage.
Precautions	Anti-ADAM15 Rabbit pAb is for research use only and not for use in diagnostic or therapeutic procedures.

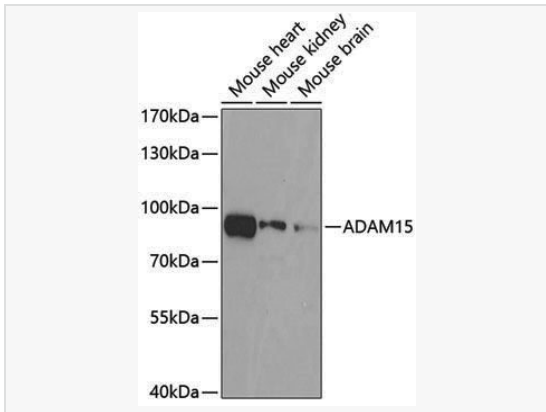
Protein Information

Synonyms	MDC15; ADAM15.
Calculated MW	Calculated MW: 93 kDa; Observed MW: 93 kDa
Uniprot ID	Q13444
Gene ID	8751
Background	The protein encoded by this gene is a member of the ADAM (a disintegrin and metalloproteinase) protein family. ADAM family members are type I transmembrane glycoproteins known to be involved in cell adhesion and proteolytic ectodomain processing of cytokines and adhesion molecules. This protein contains multiple functional domains including a zinc-binding metalloprotease domain, a disintegrin-like domain, as well as a EGF-like domain. Through its disintegrin-like domain, this protein specifically interacts with the integrin beta chain, beta 3. It also interacts with Src family protein-tyrosine kinases in a phosphorylation-dependent manner, suggesting that this protein may function in cell-cell adhesion as well as in cellular signaling. Multiple alternatively spliced transcript variants encoding distinct isoforms have been observed.

Validation Images



Immunofluorescence analysis of HeLa cells using ADAM15 Rabbit pAb (P107786) at dilution of 1:100 (40× lens). Secondary antibody: Cy3-conjugated Goat anti-Rabbit IgG (H+L) at 1:500 dilution. Blue: DAPI for nuclear staining.



Western blot analysis of various lysates using ADAM15 Rabbit pAb (P107786) at 1:500 dilution.

Secondary antibody: HRP-conjugated Goat anti-Rabbit IgG (H+L) (LF102) at 1:10,000 dilution.

Lysates/proteins: 25µg per lane.

Blocking buffer: 3% nonfat dry milk in TBST.

Detection: ECL Kit (SQ201).

Exposure time: 90s.