

Anti-FAM20A Rabbit pAb

Purified Rabbit Polyclonal Antibody

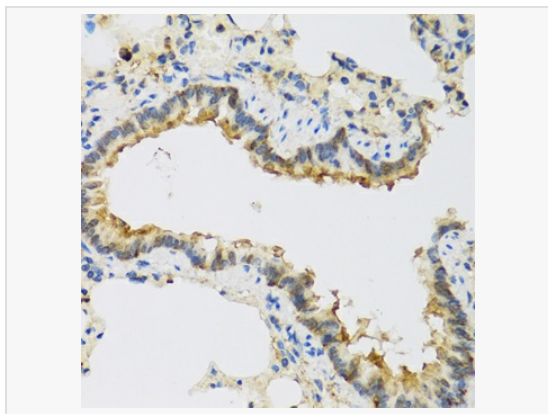
Catalog # P107781

Product Information

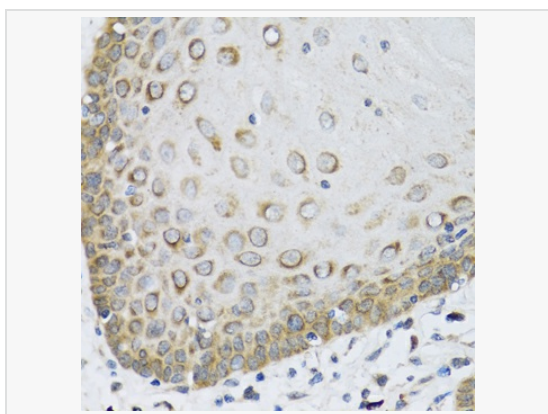
Application	WB, IHC-P/IF (Tissue-P), ELISA
Reactivity	Human, Mouse, Rat
Dilution	WB 1:500~1:2,000; IHC-P 1:100~1:200
Host	Rabbit
Clonality	Polyclonal
Isotype	IgG
Label	Unconjugated
Immunogen	Recombinant fusion protein containing a sequence corresponding to amino acids 140-240 of human FAM20A (NP_060035.2).
Format	Affinity purified polyclonal antibody supplied in PBS with 0.02% sodium azide and 50% glycerol, pH 7.3.
Storage	Shipped on wet ice. Store at -20°C. Stable for 24 months from date of receipt. Aliquoting is unnecessary for -20°C storage.
Precautions	Anti-FAM20A Rabbit pAb is for research use only and not for use in diagnostic or therapeutic procedures.

Protein Information

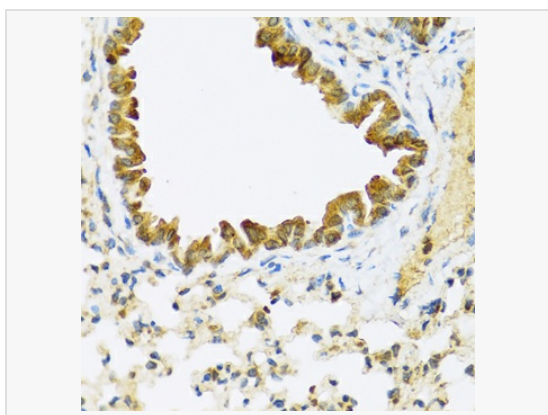
Synonyms	A11G; AIGFS; FP2747; FAM20A.
Calculated MW	Calculated MW: 61 kDa; Observed MW: 54 kDa
Uniprot ID	Q96MK3
Gene ID	54757
Background	This locus encodes a protein that is likely secreted and may function in hematopoiesis. A mutation at this locus has been associated with amelogenesis imperfecta and gingival hyperplasia syndrome. Alternatively spliced transcript variants have been identified.



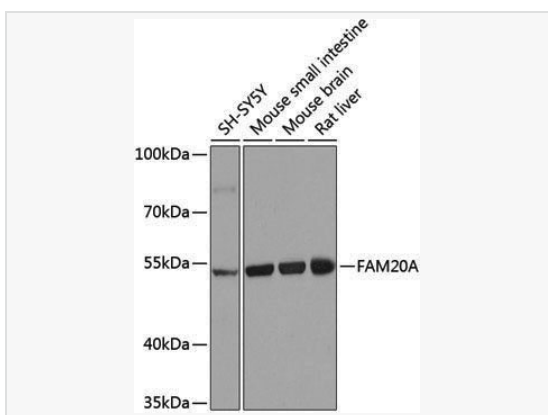
Immunohistochemistry analysis of paraffin-embedded Rat lung using FAM20A Rabbit pAb (P107781) at dilution of 1:100 (40× lens). Microwave antigen retrieval performed with 0.01M PBS Buffer (pH 7.2) prior to IHC staining.



Immunohistochemistry analysis of paraffin-embedded Human esophagus using FAM20A Rabbit pAb (P107781) at dilution of 1:100 (40× lens). Microwave antigen retrieval performed with 0.01M PBS Buffer (pH 7.2) prior to IHC staining.



Immunohistochemistry analysis of paraffin-embedded Mouse lung using FAM20A Rabbit pAb (P107781) at dilution of 1:100 (40× lens). Microwave antigen retrieval performed with 0.01M PBS Buffer (pH 7.2) prior to IHC staining.



Western blot analysis of various lysates using FAM20A Rabbit pAb (P107781) at 1:1,000 dilution.
Secondary antibody: HRP-conjugated Goat anti-Rabbit IgG (H+L) (LF102) at 1:10,000 dilution.
Lysates/proteins: 25µg per lane.
Blocking buffer: 3% nonfat dry milk in TBST.
Detection: ECL Kit (SQ201).
Exposure time: 5s.