

Anti-SLK Rabbit pAb

Purified Rabbit Polyclonal Antibody

Catalog # P107618

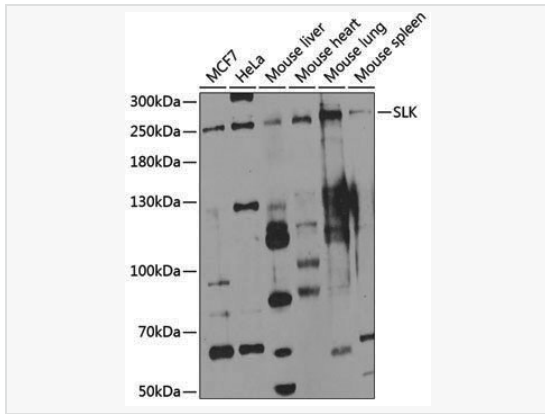
Product Information

Application	WB, ELISA
Reactivity	Human, Mouse, Rat
Dilution	WB 1:500~1:2,000
Host	Rabbit
Clonality	Polyclonal
Isotype	IgG
Label	Unconjugated
Immunogen	Recombinant fusion protein containing a sequence corresponding to amino acids 1-230 of human SLK (NP_055535.2).
Format	Affinity purified polyclonal antibody supplied in PBS with 0.02% sodium azide and 50% glycerol, pH 7.3.
Storage	Shipped on wet ice. Store at -20°C. Stable for 24 months from date of receipt. Aliquoting is unnecessary for -20°C storage.
Precautions	Anti-SLK Rabbit pAb is for research use only and not for use in diagnostic or therapeutic procedures.

Protein Information

Synonyms	LOSK; STK2; se20-9; bA16H23.1; SLK.
Calculated MW	Calculated MW: 143 kDa; Observed MW: 250 kDa
Uniprot ID	Q9H2G2
Gene ID	9748
Background	Enables protein homodimerization activity and protein serine/threonine kinase activity. Involved in several processes, including cytoplasmic microtubule organization; protein autophosphorylation; and regulation of focal adhesion assembly. Located in perinuclear region of cytoplasm.

Validation Images



Western blot analysis of various lysates using SLK Rabbit pAb (P107618) at 1:1,000 dilution.

Secondary antibody: HRP-conjugated Goat anti-Rabbit IgG (H+L) (LF102) at 1:10,000 dilution.

Lysates/proteins: 25 μ g per lane.

Blocking buffer: 3% nonfat dry milk in TBST.

Detection: ECL Enhanced Kit (SQ201).

Exposure time: 90s.