

Anti-POC1A Rabbit pAb

Purified Rabbit Polyclonal Antibody

Catalog # P107415

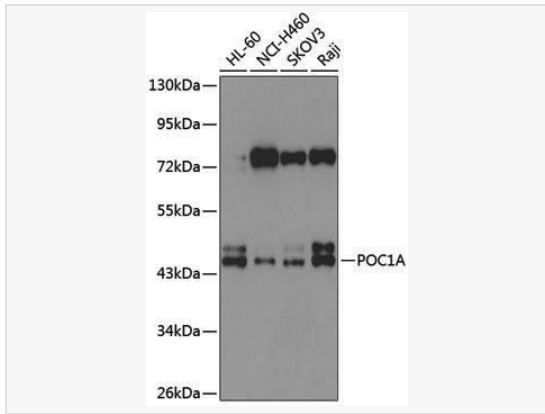
Product Information

Application	WB, ELISA
Reactivity	Human, Mouse, Rat
Dilution	WB 1:500~1:2,000
Host	Rabbit
Clonality	Polyclonal
Isotype	IgG
Label	Unconjugated
Immunogen	Recombinant fusion protein containing a sequence corresponding to amino acids 138-407 of human POC1A (NP_056241.3).
Format	Affinity purified polyclonal antibody supplied in PBS with 0.02% sodium azide and 50% glycerol, pH 7.3.
Storage	Shipped on wet ice. Store at -20°C. Stable for 24 months from date of receipt. Aliquoting is unnecessary for -20°C storage.
Precautions	Anti-POC1A Rabbit pAb is for research use only and not for use in diagnostic or therapeutic procedures.

Protein Information

Synonyms	PIX2; SOFT; WDR51A; POC1A.
Calculated MW	Calculated MW: 45 kDa; Observed MW: 45 kDa
Uniprot ID	Q8NBT0
Gene ID	25886
Background	POC1 proteins contain an N-terminal WD40 domain and a C-terminal coiled coil domain and are part of centrosomes. They play an important role in basal body and cilia formation. This gene encodes one of the two POC1 proteins found in humans. Mutations in this gene result in short stature, onychodysplasia, facial dysmorphism, and hypotrichosis (SOFT) syndrome.

Validation Images



Western blot analysis of various lysates using POC1A Rabbit pAb (P107415) at 1:1,000 dilution.

Secondary antibody: HRP-conjugated Goat anti-Rabbit IgG (H+L) (LF102) at 1:10,000 dilution.

Lysates/proteins: 25 μ g per lane.

Blocking buffer: 3% nonfat dry milk in TBST.

Detection: ECL Kit (SQ201).

Exposure time: 90s.