

Anti-NAA60 Rabbit pAb

Purified Rabbit Polyclonal Antibody

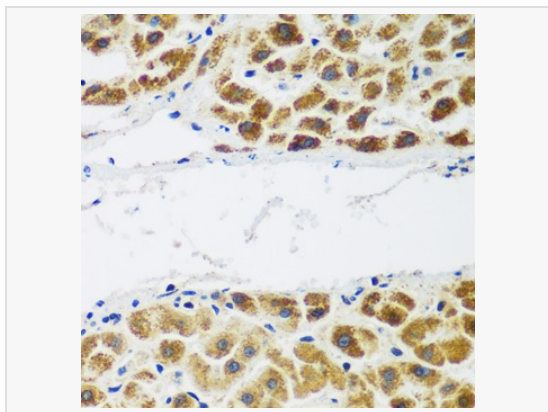
Catalog # P107384

Product Information

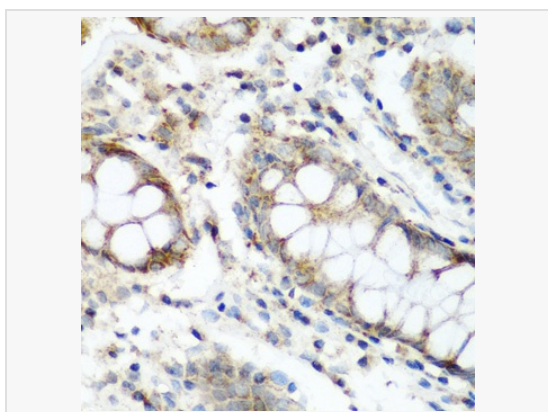
Application	WB, IHC-P/IF (Tissue-P), ELISA
Reactivity	Human, Mouse, Rat
Dilution	WB 1:500~1:2,000; IHC-P 1:50~1:200
Host	Rabbit
Clonality	Polyclonal
Isotype	IgG
Label	Unconjugated
Immunogen	Recombinant fusion protein containing a sequence corresponding to amino acids 1-184 of human NAA60 (NP_001077070.1).
Format	Affinity purified polyclonal antibody supplied in PBS with 0.02% sodium azide and 50% glycerol, pH 7.3.
Storage	Shipped on wet ice. Store at -20°C. Stable for 24 months from date of receipt. Aliquoting is unnecessary for -20°C storage.
Precautions	Anti-NAA60 Rabbit pAb is for research use only and not for use in diagnostic or therapeutic procedures.

Protein Information

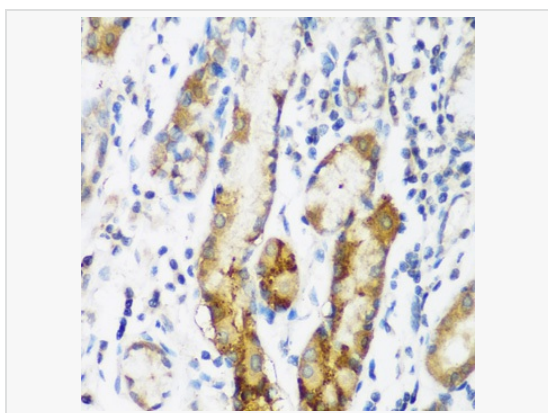
Synonyms	HAT4; NatF; NAT15; hNaa60; NAA60.
Calculated MW	Calculated MW: 27 kDa; Observed MW: 27 kDa
Uniprot ID	Q9H7X0
Gene ID	79903
Background	This gene encodes an enzyme that localizes to the Golgi apparatus, where it transfers an acetyl group to the N-terminus of free proteins. This enzyme acts on histones, and its activity is important for chromatin assembly and chromosome integrity. Alternative splicing and the use of alternative promoters results in multiple transcript variants. The upstream promoter is located in a differentially methylated region (DMR) and undergoes imprinting; transcript variants originating from this position are expressed from the maternal allele.



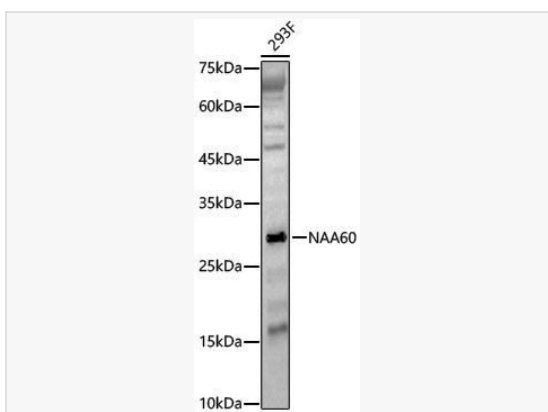
Immunohistochemistry analysis of paraffin-embedded Human liver cancer using NAA60 Rabbit pAb (P107384) at dilution of 1:200 (40× lens). Microwave antigen retrieval performed with 0.01M PBS Buffer (pH 7.2) prior to IHC staining.



Immunohistochemistry analysis of paraffin-embedded Human colon using NAA60 Rabbit pAb (P107384) at dilution of 1:200 (40× lens). Microwave antigen retrieval performed with 0.01M PBS Buffer (pH 7.2) prior to IHC staining.



Immunohistochemistry analysis of paraffin-embedded Human gastric using NAA60 Rabbit pAb (P107384) at dilution of 1:200 (40× lens). Microwave antigen retrieval performed with 0.01M PBS Buffer (pH 7.2) prior to IHC staining.



Western blot analysis of lysates from 293F cells, using NAA60 Rabbit pAb (P107384) at 1:2,000 dilution.
Secondary antibody: HRP-conjugated Goat anti-Rabbit IgG (H+L) (LF102) at 1:10,000 dilution.
Lysates/proteins: 25µg per lane.
Blocking buffer: 3% nonfat dry milk in TBST.
Detection: ECL Kit (SQ201).
Exposure time: 180s.