

Anti-GRID1 Rabbit pAb

Purified Rabbit Polyclonal Antibody

Catalog # P107256

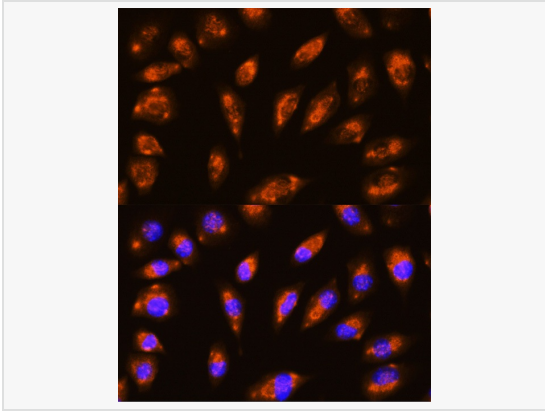
Product Information

Application	WB, IF (Cell)/ICC, ELISA
Reactivity	Mouse, Rat
Dilution	WB 1:500~1:2,000; IF 1:50~1:200
Host	Rabbit
Clonality	Polyclonal
Isotype	IgG
Label	Unconjugated
Immunogen	Recombinant fusion protein containing a sequence corresponding to amino acids 880-1009 of human GRID1 (NP_060021.1).
Format	Affinity purified polyclonal antibody supplied in PBS with 0.02% sodium azide and 50% glycerol, pH 7.3.
Storage	Shipped on wet ice. Store at -20°C. Stable for 24 months from date of receipt. Aliquoting is unnecessary for -20°C storage.
Precautions	Anti-GRID1 Rabbit pAb is for research use only and not for use in diagnostic or therapeutic procedures.

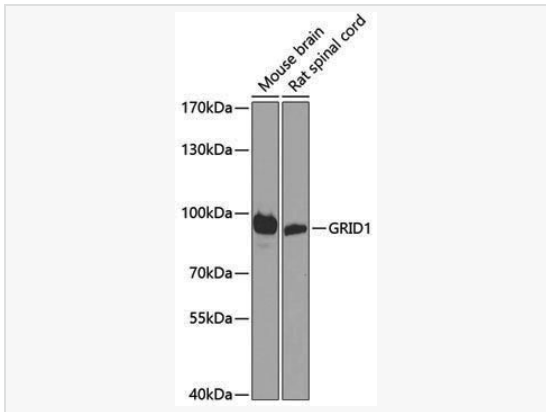
Protein Information

Synonyms	GluD1; GluD1-b; GRID1.
Calculated MW	Calculated MW: 112 kDa; Observed MW: 100 kDa
Uniprot ID	Q9ULK0
Gene ID	2894
Background	This gene encodes a subunit of glutamate receptor channels. These channels mediate most of the fast excitatory synaptic transmission in the central nervous system and play key roles in synaptic plasticity.

Validation Images



Immunofluorescence analysis of L929 cells using GRID1 Rabbit pAb (P107256) at dilution of 1:100 (40× lens). Secondary antibody: Cy3-conjugated Goat anti-Rabbit IgG (H+L) at 1:500 dilution. Blue: DAPI for nuclear staining.



Western blot analysis of various lysates using GRID1 Rabbit pAb (P107256) at 1:1,000 dilution.

Secondary antibody: HRP-conjugated Goat anti-Rabbit IgG (H+L) (LF102) at 1:10,000 dilution.

Lysates/proteins: 25µg per lane.

Blocking buffer: 3% nonfat dry milk in TBST.

Detection: ECL Kit (SQ201).

Exposure time: 1s.