

Anti-delta-sarcoglycan Rabbit pAb

Purified Rabbit Polyclonal Antibody

Catalog # P107146

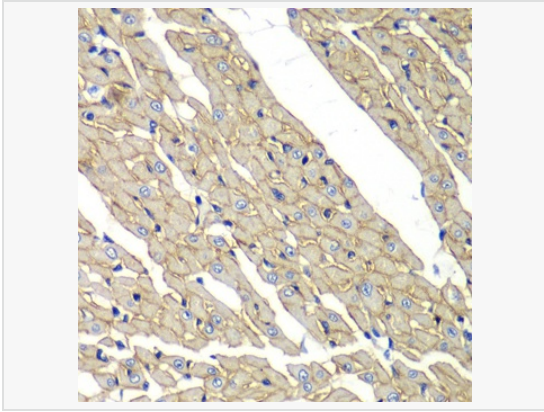
Product Information

Application	WB, IHC-P/IF (Tissue-P), ELISA
Reactivity	Human, Mouse, Rat
Dilution	WB 1:500~1:2,000; IHC-P 1:50~1:100
Host	Rabbit
Clonality	Polyclonal
Isotype	IgG
Label	Unconjugated
Immunogen	Recombinant fusion protein containing a sequence corresponding to amino acids 61-290 of human Delta-sarcoglycan (Delta-sarcoglycan (SGCD)) (NP_000328.2).
Format	Affinity purified polyclonal antibody supplied in PBS with 0.02% sodium azide and 50% glycerol, pH 7.3.
Storage	Shipped on wet ice. Store at -20°C. Stable for 24 months from date of receipt. Aliquoting is unnecessary for -20°C storage.
Precautions	Anti-delta-sarcoglycan Rabbit pAb is for research use only and not for use in diagnostic or therapeutic procedures.

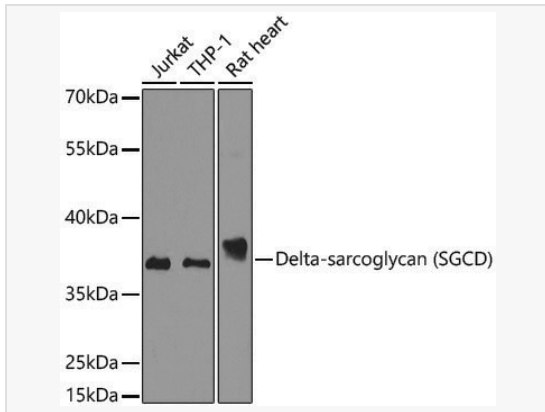
Protein Information

Synonyms	SGD; DAGD; 35DAG; CMD1L; SGCDP; LGMDR6; SG-delta; SGCD.
Calculated MW	Calculated MW: 32 kDa; Observed MW: 37 kDa
Uniprot ID	Q92629
Gene ID	6444
Background	The protein encoded by this gene is one of the four known components of the sarcoglycan complex, which is a subcomplex of the dystrophin-glycoprotein complex (DGC). DGC forms a link between the F-actin cytoskeleton and the extracellular matrix. This protein is expressed most abundantly in skeletal and cardiac muscle. Mutations in this gene have been associated with autosomal recessive limb-girdle muscular dystrophy and dilated cardiomyopathy. Alternatively spliced transcript variants encoding distinct isoforms have been observed for this gene.

Validation Images



Immunohistochemistry analysis of paraffin-embedded Rat heart using Delta-sarcoglycan (SGCD) Rabbit pAb (P107146) at dilution of 1:100 (40× lens). Microwave antigen retrieval performed with 0.01M PBS Buffer (pH 7.2) prior to IHC staining.



Western blot analysis of various lysates using Delta-sarcoglycan (SGCD) Rabbit pAb (P107146) at 1:1,000 dilution.
Secondary antibody: HRP-conjugated Goat anti-Rabbit IgG (H+L) (LF102) at 1:10,000 dilution.
Lysates/proteins: 25µg per lane.
Blocking buffer: 3% nonfat dry milk in TBST.
Detection: ECL Kit (SQ201).
Exposure time: 90s.