

## Anti-GLUT1/SLC2A1 Rabbit pAb

Purified Rabbit Polyclonal Antibody

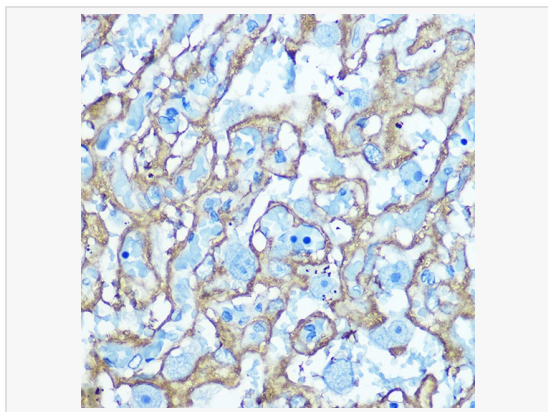
Catalog # P106693

### Product Information

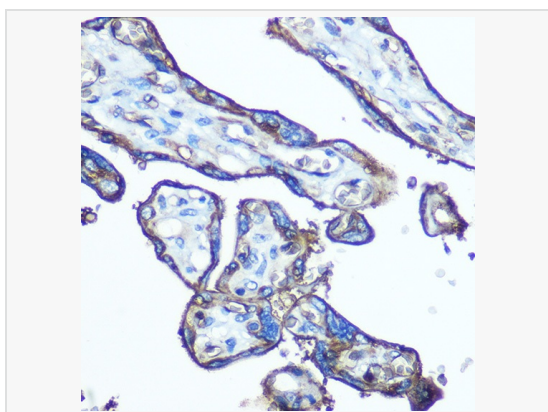
Application	WB, IHC-P/IF (Tissue-P), ELISA
Reactivity	Human, Mouse, Rat
Dilution	WB 1:1,000~1:5,000; IHC-P 1:50~1:200
Host	Rabbit
Clonality	Polyclonal
Isotype	IgG
Label	Unconjugated
Immunogen	A synthetic peptide corresponding to a sequence within amino acids 210-310 of human GLUT1/SLC2A1 (NP_006507.2).
Format	Affinity purified polyclonal antibody supplied in PBS with 0.02% sodium azide and 50% glycerol, pH 7.3.
Storage	Shipped on wet ice. Store at -20°C. Stable for 24 months from date of receipt. Aliquoting is unnecessary for -20°C storage.
Precautions	Anti-GLUT1/SLC2A1 Rabbit pAb is for research use only and not for use in diagnostic or therapeutic procedures.

### Protein Information

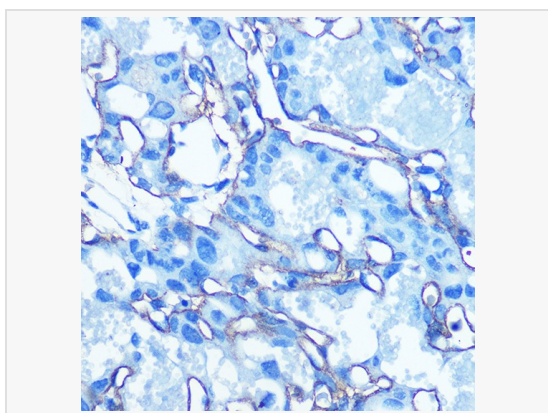
Synonyms	CSE; PED; DYT9; GLUT; DYT17; DYT18; EIG12; GLUT1; HTLVR; GLUT-1; SDCHCN; GLUT1DS; GLUT1/SLC2A1.
Calculated MW	Calculated MW: 54 kDa; Observed MW: 45-60 kDa
Uniprot ID	P11166
Gene ID	6513
Background	This gene encodes a major glucose transporter in the mammalian blood-brain barrier. The encoded protein is found primarily in the cell membrane and on the cell surface, where it can also function as a receptor for human T-cell leukemia virus (HTLV) I and II. Mutations in this gene have been found in a family with paroxysmal exertion-induced dyskinesia.



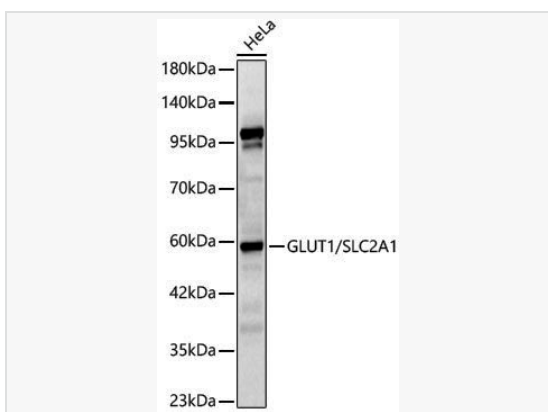
Immunohistochemistry analysis of paraffin-embedded Rat placenta using GLUT1/SLC2A1 Rabbit pAb (P106693) at dilution of 1:100 (40× lens). Microwave antigen retrieval performed with 0.01M Tris/EDTA Buffer (pH 9.0) prior to IHC staining.



Immunohistochemistry analysis of paraffin-embedded Human placenta using GLUT1/SLC2A1 Rabbit pAb (P106693) at dilution of 1:100 (40× lens). Microwave antigen retrieval performed with 0.01M Tris/EDTA Buffer (pH 9.0) prior to IHC staining.



Immunohistochemistry analysis of paraffin-embedded Mouse placenta using GLUT1/SLC2A1 Rabbit pAb (P106693) at dilution of 1:100 (40× lens). Microwave antigen retrieval performed with 0.01M Tris/EDTA Buffer (pH 9.0) prior to IHC staining.



Western blot analysis of lysates from HeLa cells, using GLUT1/SLC2A1 Rabbit pAb (P106693) at 1:2,000 dilution.  
Secondary antibody: HRP-conjugated Goat anti-Rabbit IgG (H+L) (LF102) at 1:10,000 dilution.  
Lysates/proteins: 25µg per lane.  
Blocking buffer: 3% nonfat dry milk in TBST.  
Detection: ECL Kit.  
Exposure time: 60s.