

Anti-CTCFL Rabbit pAb

Purified Rabbit Polyclonal Antibody

Catalog # P106686

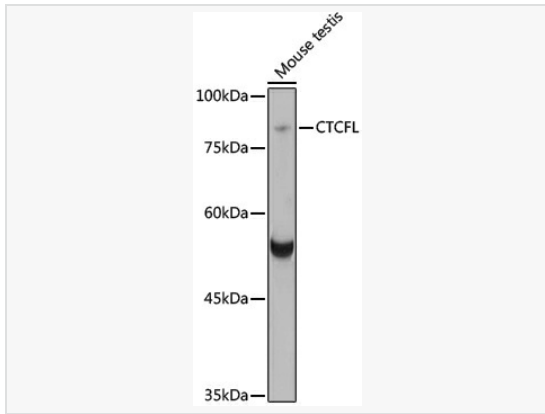
Product Information

Application	WB, ELISA
Reactivity	Human, Mouse, Rat
Dilution	WB 1:500~1:1,000
Host	Rabbit
Clonality	Polyclonal
Isotype	IgG
Label	Unconjugated
Immunogen	Recombinant fusion protein containing a sequence corresponding to amino acids 1-270 of human CTCFL (NP_001255970.1).
Format	Affinity purified polyclonal antibody supplied in PBS with 0.02% sodium azide and 50% glycerol, pH 7.3.
Storage	Shipped on wet ice. Store at -20°C. Stable for 24 months from date of receipt. Aliquoting is unnecessary for -20°C storage.
Precautions	Anti-CTCFL Rabbit pAb is for research use only and not for use in diagnostic or therapeutic procedures.

Protein Information

Synonyms	CT27; BORIS; CTCF-T; HMGB1L1; dJ579F20.2; CTCFL.
Calculated MW	Calculated MW: 76 kDa; Observed MW: 83 kDa
Uniprot ID	Q8NI51
Gene ID	140690
Background	CCCTC-binding factor (CTCF), an 11-zinc-finger factor involved in gene regulation, utilizes different zinc fingers to bind varying DNA target sites. CTCF forms methylation-sensitive insulators that regulate X-chromosome inactivation. This gene is a paralog of CTCF and appears to be expressed primarily in the cytoplasm of spermatocytes, unlike CTCF which is expressed primarily in the nucleus of somatic cells. CTCF and the protein encoded by this gene are normally expressed in a mutually exclusive pattern that correlates with resetting of methylation marks during male germ cell differentiation. Multiple alternatively spliced transcript variants encoding different isoforms have been found for this gene.

Validation Images



Western blot analysis of various lysates using CTCFL Rabbit pAb (P106686) at 1:1,000 dilution.

Secondary antibody: HRP-conjugated Goat anti-Rabbit IgG (H+L) (LF102) at 1:10,000 dilution.

Lysates/proteins: 25 μ g per lane.

Blocking buffer: 3% nonfat dry milk in TBST.

Detection: ECL Kit (SQ201).

Exposure time: 8s.