

Anti-RDM1 Rabbit pAb

Purified Rabbit Polyclonal Antibody

Catalog # P106580

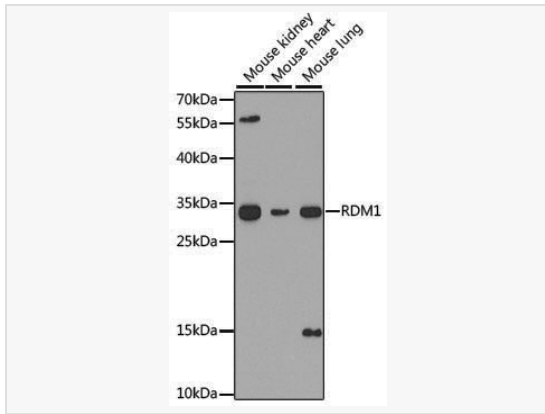
Product Information

Application	WB, ELISA
Reactivity	Mouse
Dilution	WB 1:200~1:2,000
Host	Rabbit
Clonality	Polyclonal
Isotype	IgG
Label	Unconjugated
Immunogen	Recombinant fusion protein containing a sequence corresponding to amino acids 125-284 of human RDM1 (NP_663629.1).
Format	Affinity purified polyclonal antibody supplied in PBS with 0.02% sodium azide and 50% glycerol, pH 7.3.
Storage	Shipped on wet ice. Store at -20°C. Stable for 24 months from date of receipt. Aliquoting is unnecessary for -20°C storage.
Precautions	Anti-RDM1 Rabbit pAb is for research use only and not for use in diagnostic or therapeutic procedures.

Protein Information

Synonyms	RAD52B; RDM1.
Calculated MW	Calculated MW: 32 kDa; Observed MW: 32 kDa
Uniprot ID	Q8NG50
Gene ID	201299
Background	This gene encodes a protein involved in the cellular response to cisplatin, a drug commonly used in chemotherapy. The protein encoded by this gene contains two motifs: a motif found in RAD52, a protein that functions in DNA double-strand breaks and homologous recombination, and an RNA recognition motif (RRM) that is not found in RAD52. The RAD52 motif region in RAD52 is important for protein function and may be involved in DNA binding or oligomerization. Alternatively spliced transcript variants encoding different isoforms have been reported.

Validation Images



Western blot analysis of various lysates using RDM1 Rabbit pAb (P106580) at 1:1,000 dilution.

Secondary antibody: HRP-conjugated Goat anti-Rabbit IgG (H+L) (LF102) at 1:10,000 dilution.

Lysates/proteins: 25 μ g per lane.

Blocking buffer: 3% nonfat dry milk in TBST.

Detection: ECL Kit (SQ201).

Exposure time: 90s.