

# Anti-MCM10 Rabbit pAb

Purified Rabbit Polyclonal Antibody

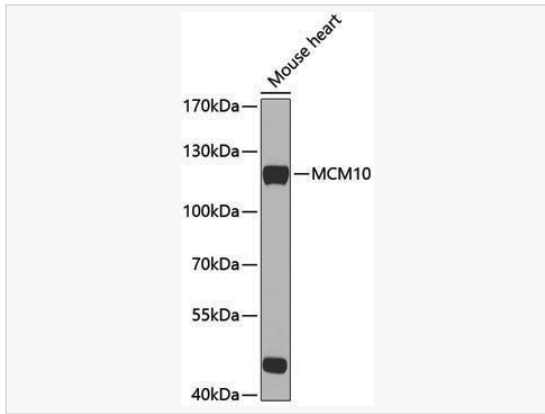
Catalog # P106507

## Product Information

Application	WB, ELISA
Reactivity	Human, Mouse
Dilution	WB 1:500~1:2,000
Host	Rabbit
Clonality	Polyclonal
Isotype	IgG
Label	Unconjugated
Immunogen	Recombinant fusion protein containing a sequence corresponding to amino acids 616-875 of human MCM10 (NP_877428.1).
Format	Affinity purified polyclonal antibody supplied in PBS with 0.02% sodium azide and 50% glycerol, pH 7.3.
Storage	Shipped on wet ice. Store at -20°C. Stable for 24 months from date of receipt. Aliquoting is unnecessary for -20°C storage.
Precautions	Anti-MCM10 Rabbit pAb is for research use only and not for use in diagnostic or therapeutic procedures.

## Protein Information

Synonyms	CNA43; DNA43; IMD80; PRO2249; MCM10.
Calculated MW	Calculated MW: 98 kDa; Observed MW: 125 kDa
Uniprot ID	Q7L590
Gene ID	55388
Background	The protein encoded by this gene is one of the highly conserved mini-chromosome maintenance proteins (MCM) that are involved in the initiation of eukaryotic genome replication. The hexameric protein complex formed by MCM proteins is a key component of the pre-replication complex (pre-RC) and it may be involved in the formation of replication forks and in the recruitment of other DNA replication related proteins. This protein can interact with MCM2 and MCM6, as well as with the origin recognition protein ORC2. It is regulated by proteolysis and phosphorylation in a cell cycle-dependent manner. Studies of a similar protein in <i>Xenopus</i> suggest that the chromatin binding of this protein at the onset of DNA replication is after pre-RC assembly and before origin unwinding. Alternatively spliced transcript variants encoding distinct isoforms have been identified.



Western blot analysis of lysates from mouse heart, using MCM10 Rabbit pAb (P106507) at 1:1,000 dilution.

Secondary antibody: HRP-conjugated Goat anti-Rabbit IgG (H+L) (LF102) at 1:10,000 dilution.

Lysates/proteins: 25µg per lane.

Blocking buffer: 3% nonfat dry milk in TBST.

Detection: ECL Kit (SQ201).

Exposure time: 30s.