

## Anti-SLC3A1 Rabbit pAb

Purified Rabbit Polyclonal Antibody

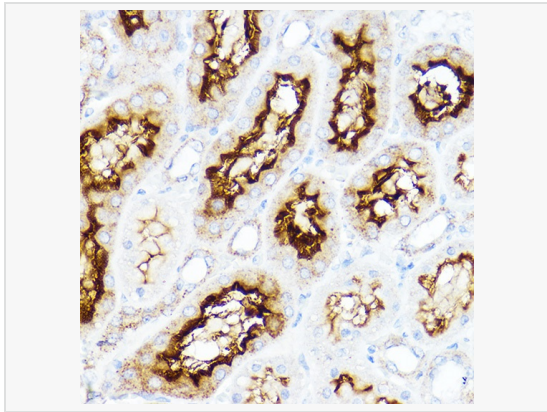
Catalog # P106043

### Product Information

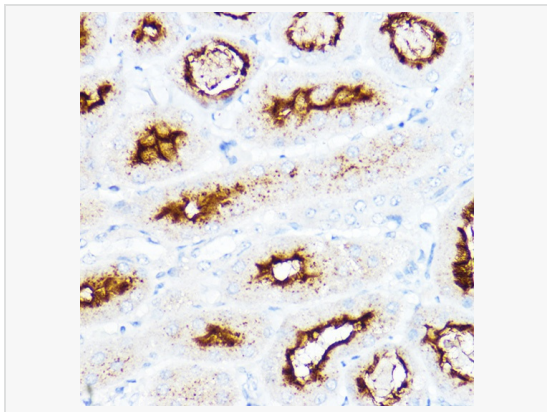
Application	WB, IHC-P/IF (Tissue-P), ELISA
Reactivity	Human, Mouse, Rat
Dilution	WB 1:500~1:2,000; IHC-P 1:50~1:200
Host	Rabbit
Clonality	Polyclonal
Isotype	IgG
Label	Unconjugated
Immunogen	Recombinant fusion protein containing a sequence corresponding to amino acids 416-685 of human SLC3A1 (NP_000332.2).
Format	Affinity purified polyclonal antibody supplied in PBS with 0.02% sodium azide and 50% glycerol, pH 7.3.
Storage	Shipped on wet ice. Store at -20°C. Stable for 24 months from date of receipt. Aliquoting is unnecessary for -20°C storage.
Precautions	Anti-SLC3A1 Rabbit pAb is for research use only and not for use in diagnostic or therapeutic procedures.

### Protein Information

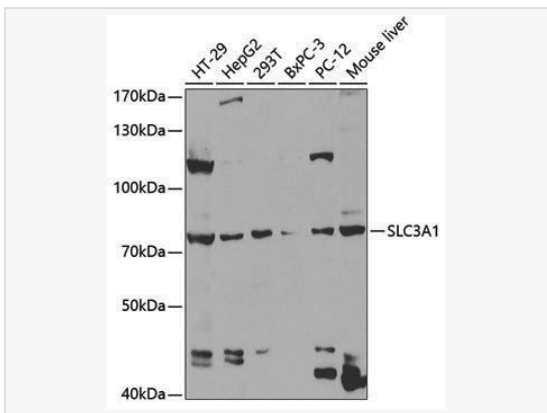
Synonyms	D2H; ATR1; NBAT; RBAT; CSNU1; SLC3A1.
Calculated MW	Calculated MW: 79 kDa; Observed MW: 79 kDa
Uniprot ID	Q07837
Gene ID	6519
Background	This gene encodes a type II membrane glycoprotein which is one of the components of the renal amino acid transporter which transports neutral and basic amino acids in the renal tubule and intestinal tract. Mutations and deletions in this gene are associated with cystinuria. Alternatively spliced transcript variants have been described, but their biological validity has not been determined.



Immunohistochemistry analysis of paraffin-embedded Rat kidney using SLC3A1 Rabbit pAb (P106043) at dilution of 1:200 (40× lens). High pressure antigen retrieval performed with 0.01M Citrate Bufferr (pH 6.0) prior to IHC staining.



Immunohistochemistry analysis of paraffin-embedded Mouse kidney using SLC3A1 Rabbit pAb (P106043) at dilution of 1:200 (40× lens). High pressure antigen retrieval performed with 0.01M Citrate Bufferr (pH 6.0) prior to IHC staining.



Western blot analysis of various lysates using SLC3A1 Rabbit pAb (P106043) at 1:1,000 dilution.

Secondary antibody: HRP-conjugated Goat anti-Rabbit IgG (H+L) (LF102) at 1:10,000 dilution.

Lysates/proteins: 25µg per lane.

Blocking buffer: 3% nonfat dry milk in TBST.

Detection: ECL Kit (SQ201).

Exposure time: 90s.