

## Anti-GUCY2D Rabbit pAb

Purified Rabbit Polyclonal Antibody

Catalog # P105927

### Product Information

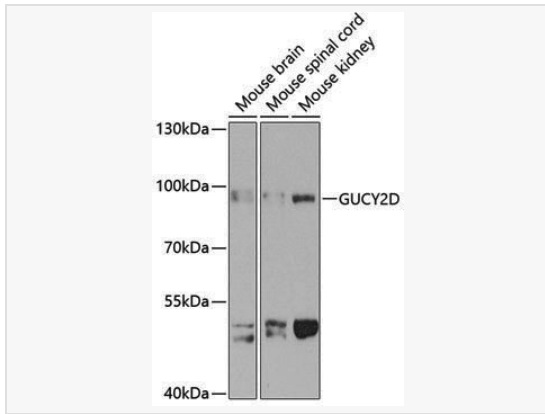
Application	WB, ELISA
Reactivity	Human, Mouse, Rat
Dilution	WB 1:200~1:2,000
Host	Rabbit
Clonality	Polyclonal
Isotype	IgG
Label	Unconjugated
Immunogen	Recombinant fusion protein containing a sequence corresponding to amino acids 52-350 of human GUCY2D (NP_000171.1).
Format	Affinity purified polyclonal antibody supplied in PBS with 0.02% sodium azide and 50% glycerol, pH 7.3.
Storage	Shipped on wet ice. Store at -20°C. Stable for 24 months from date of receipt. Aliquoting is unnecessary for -20°C storage.
Precautions	Anti-GUCY2D Rabbit pAb is for research use only and not for use in diagnostic or therapeutic procedures.

### Protein Information

Synonyms	LCA; CACD; CG-E; CYGD; LCA1; RCD2; CACD1; CORD5; CORD6; GUC2D; ROSGC; retGC; CSNB11; GUC1A4; RETGC-1; ROS-GC1; GUCY2D.
Calculated MW	Calculated MW: 120 kDa; Observed MW: 95 kDa
Uniprot ID	Q02846
Gene ID	3000
Background	This gene encodes a retina-specific guanylate cyclase, which is a member of the membrane guanylyl cyclase family. Like other membrane guanylyl cyclases, this enzyme has a hydrophobic amino-terminal signal sequence followed by a large extracellular domain, a single membrane spanning domain, a kinase homology domain, and a guanylyl cyclase catalytic domain. In contrast to other membrane guanylyl cyclases, this enzyme is not activated by natriuretic peptides. Mutations in this gene result in Leber congenital amaurosis and cone-rod dystrophy-6 diseases.

## Validation Images

---



Western blot analysis of various lysates using GUCY2D Rabbit pAb (P105927) at 1:1,000 dilution.

Secondary antibody: HRP-conjugated Goat anti-Rabbit IgG (H+L) (LF102) at 1:10,000 dilution.

Lysates/proteins: 25 $\mu$ g per lane.

Blocking buffer: 3% nonfat dry milk in TBST.

Detection: ECL Kit (SQ201).

Exposure time: 90s.