

[KO Validated] Anti-ARHGEF1 Rabbit pAb

Purified Rabbit Polyclonal Antibody

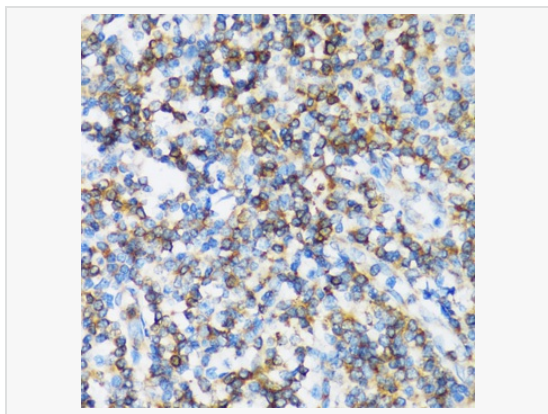
Catalog # P105889

Product Information

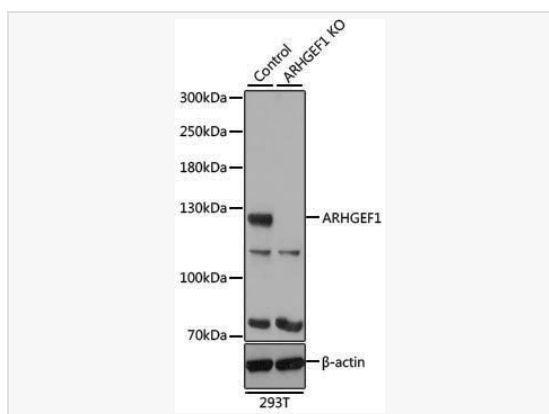
Application	WB, IHC-P/IF (Tissue-P), ELISA
Reactivity	Human, Rat
Dilution	WB 1:500~1:2,000; IHC-P 1:50~1:100
Host	Rabbit
Clonality	Polyclonal
Isotype	IgG
Label	Unconjugated
Immunogen	Recombinant fusion protein containing a sequence corresponding to amino acids 783-912 of human ARHGEF1 (NP_004697.2).
Format	Affinity purified polyclonal antibody supplied in PBS with 0.02% sodium azide and 50% glycerol, pH 7.3.
Storage	Shipped on wet ice. Store at -20°C. Stable for 24 months from date of receipt. Aliquoting is unnecessary for -20°C storage.
Precautions	Anti-ARHGEF1 Rabbit pAb is for research use only and not for use in diagnostic or therapeutic procedures.

Protein Information

Synonyms	LSC; GEF1; IMD62; LBCL2; SUB1.5; P115-RHOGEF; F1.
Calculated MW	Calculated MW: 102 kDa; Observed MW: 115 kDa
Uniprot ID	Q92888
Gene ID	9138
Background	Rho GTPases play a fundamental role in numerous cellular processes that are initiated by extracellular stimuli that work through G protein coupled receptors. The encoded protein may form complex with G proteins and stimulate Rho-dependent signals. Multiple alternatively spliced transcript variants have been found for this gene, but the full-length nature of some variants has not been defined.



Immunohistochemistry analysis of paraffin-embedded Human tonsil using [KO Validated] ARHGEF1 Rabbit pAb (P105889) at dilution of 1:100 (40× lens). Microwave antigen retrieval performed with 0.01M PBS Buffer (pH 7.2) prior to IHC staining.



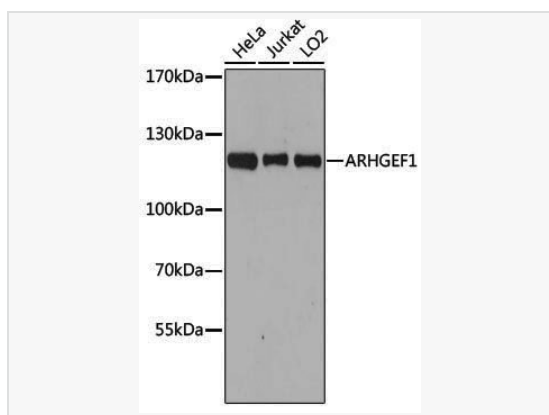
Western blot analysis of lysates from wild type (WT) and ARHGEF1 knockout (KO) 293T cells, using [KO Validated] ARHGEF1 Rabbit pAb (P105889) at 1:500 dilution. Secondary antibody: HRP-conjugated Goat anti-Rabbit IgG (H+L) (LF102) at 1:10,000 dilution.

Lysates/proteins: 25μg per lane.

Blocking buffer: 3% nonfat dry milk in TBST.

Detection: ECL Kit (SQ201).

Exposure time: 10s.



Western blot analysis of various lysates using [KO Validated] ARHGEF1 Rabbit pAb (P105889) at 1:3,000 dilution.

Secondary antibody: HRP-conjugated Goat anti-Rabbit IgG (H+L) (LF102) at 1:10,000 dilution.

Lysates/proteins: 25μg per lane.

Blocking buffer: 3% nonfat dry milk in TBST.

Detection: ECL Kit (SQ201).

Exposure time: 90s.