

Anti-MYL9 Rabbit pAb

Purified Rabbit Polyclonal Antibody

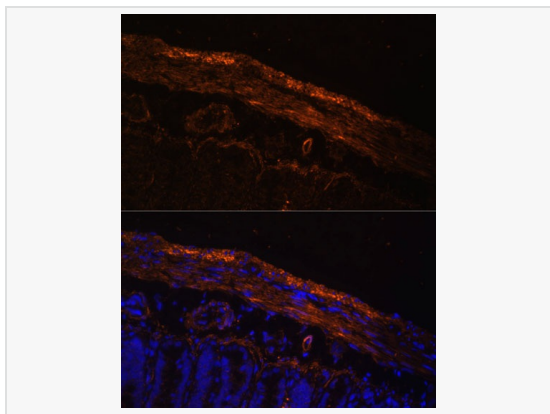
Catalog # P105874

Product Information

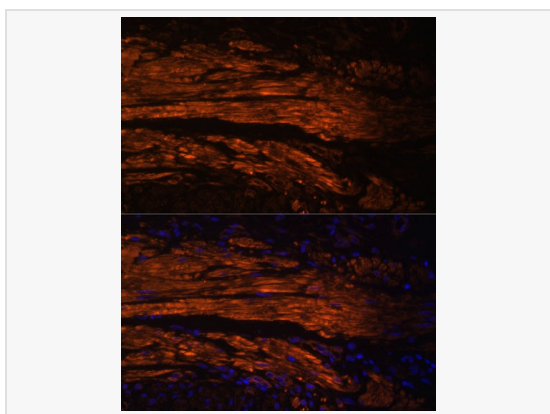
Application	WB, IF (Cell)/ICC, ELISA
Reactivity	Human, Mouse, Rat
Dilution	WB 1:500~1:1,000; IF 1:50~1:200
Host	Rabbit
Clonality	Polyclonal
Isotype	IgG
Label	Unconjugated
Immunogen	A synthetic peptide corresponding to a sequence within amino acids 1-100 of human MYL9 (NP_006088.2).
Format	Affinity purified polyclonal antibody supplied in PBS with 0.02% sodium azide and 50% glycerol, pH 7.3.
Storage	Shipped on wet ice. Store at -20°C. Stable for 24 months from date of receipt. Aliquoting is unnecessary for -20°C storage.
Precautions	Anti-MYL9 Rabbit pAb is for research use only and not for use in diagnostic or therapeutic procedures.

Protein Information

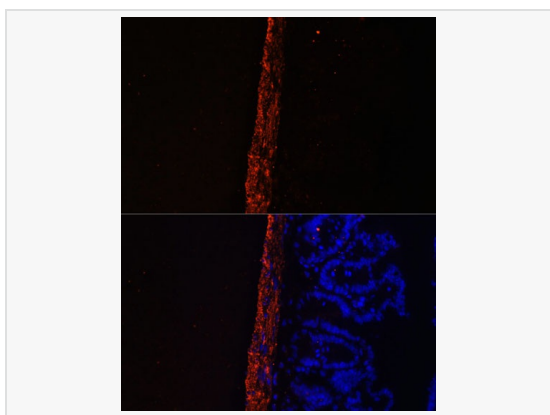
Synonyms	LC20; MLC2; MRLC1; MYRL2; MLC-2C; MMIHS4; MYL9.
Calculated MW	Calculated MW: 20 kDa; Observed MW: 18 kDa
Uniprot ID	P24844
Gene ID	10398
Background	Myosin, a structural component of muscle, consists of two heavy chains and four light chains. The protein encoded by this gene is a myosin light chain that may regulate muscle contraction by modulating the ATPase activity of myosin heads. The encoded protein binds calcium and is activated by myosin light chain kinase. Two transcript variants encoding different isoforms have been found for this gene.



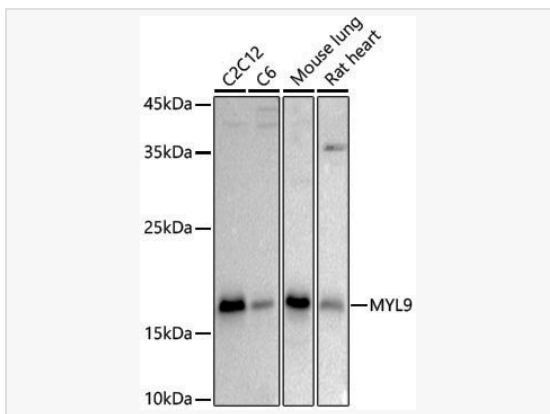
Immunofluorescence analysis of Rat intestine using MYL9 Rabbit pAb (P105874) at dilution of 1:100. Blue: DAPI for nuclear staining.



Immunofluorescence analysis of Human colon carcinoma using MYL9 Rabbit pAb (P105874) at dilution of 1:100. Blue: DAPI for nuclear staining.



Immunofluorescence analysis of Mouse intestine using MYL9 Rabbit pAb (P105874) at dilution of 1:100. Blue: DAPI for nuclear staining.



Western blot analysis of various lysates using MYL9 Rabbit pAb (P105874) at 1:1,000 dilution.

Secondary antibody: HRP-conjugated Goat anti-Rabbit IgG (H+L) (LF102) at 1:10,000 dilution.

Lysates/proteins: 25µg per lane.

Blocking buffer: 3% nonfat dry milk in TBST.

Detection: ECL Kit (SQ201).

Exposure time: 90s.