

Anti-KRR1 Rabbit pAb

Purified Rabbit Polyclonal Antibody

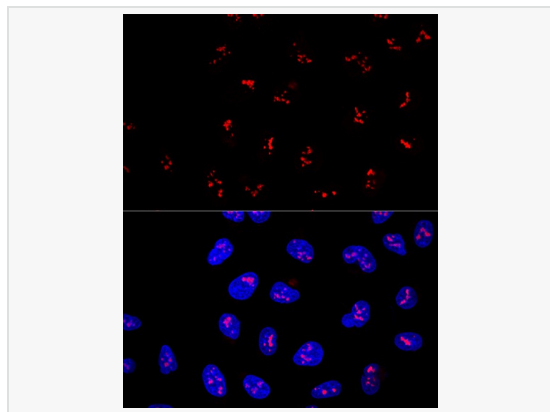
Catalog # P105750

Product Information

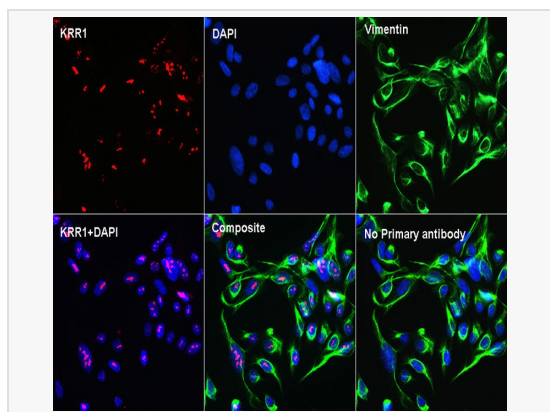
Application	WB, IF (Cell)/ICC, ELISA
Reactivity	Human, Mouse, Rat
Dilution	WB 1:500~1:2,000; IF 1:50~1:200
Host	Rabbit
Clonality	Polyclonal
Isotype	IgG
Label	Unconjugated
Immunogen	Recombinant fusion protein containing a sequence corresponding to amino acids 1-381 of human KRR1 (NP_008974.5).
Format	Affinity purified polyclonal antibody supplied in PBS with 0.02% sodium azide and 50% glycerol, pH 7.3.
Storage	Shipped on wet ice. Store at -20°C. Stable for 24 months from date of receipt. Aliquoting is unnecessary for -20°C storage.
Precautions	Anti-KRR1 Rabbit pAb is for research use only and not for use in diagnostic or therapeutic procedures.

Protein Information

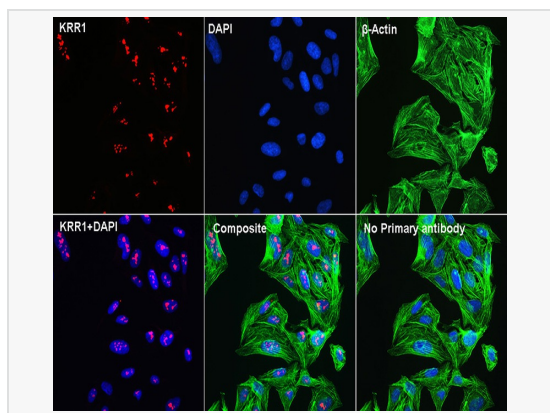
Synonyms	HRB2; RIP-1; KRR1.
Calculated MW	Calculated MW: 44 kDa; Observed MW: 44 kDa
Uniprot ID	Q13601
Gene ID	11103
Background	Enables RNA binding activity. Predicted to be involved in rRNA processing. Located in chromosome; intercellular bridge; and nuclear lumen.



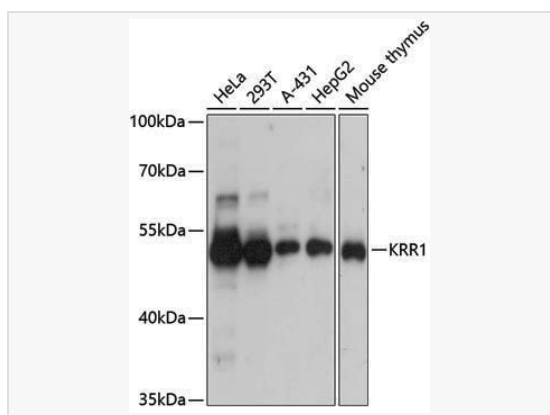
Confocal immunofluorescence analysis of U2OS cells using KRR1 Rabbit pAb (P105750) at dilution of 1:100. Blue: DAPI for nuclear staining.



Confocal Immunofluorescent analysis of U2OS cells using KRR1 Rabbit pAb (P105750) at dilution of 1:100 (40× lens)(red). Vimentin (M010697: Anti-Vimentin Mouse mAb) for Cytoskeleton staining(green), DAPI for nuclear staining(blue).



Confocal Immunofluorescent analysis of U2OS cells using KRR1 Rabbit pAb (P105750) at dilution of 1:100 (40× lens)(red). β -Actin (LF201) for Cytoskeleton staining(green), DAPI for nuclear staining(blue).



Western blot analysis of various lysates using KRR1 Rabbit pAb (P105750) at 1:3,000 dilution.

Secondary antibody: HRP-conjugated Goat anti-Rabbit IgG (H+L) (LF102) at 1:10,000 dilution.

Lysates/proteins: 25 μ g per lane.

Blocking buffer: 3% nonfat dry milk in TBST.

Detection: ECL Kit (SQ201).

Exposure time: 1s.