

## Anti-CD215/IL-15R Alpha Rabbit pAb

Purified Rabbit Polyclonal Antibody

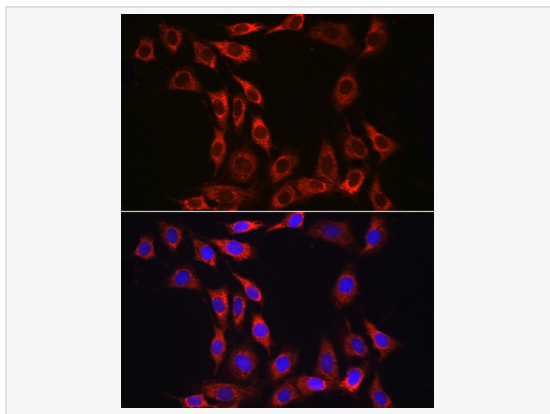
Catalog # P105638

### Product Information

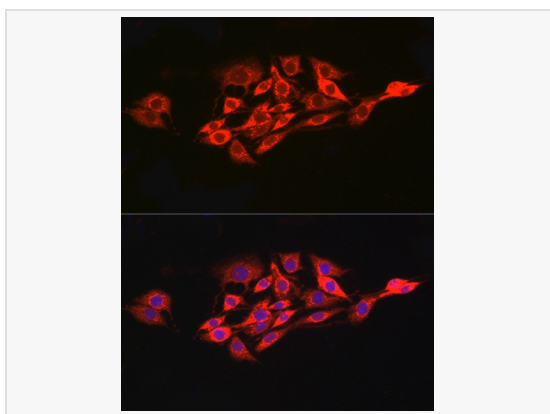
Application	WB, IF (Cell)/ICC, ELISA
Reactivity	Human, Mouse, Rat
Dilution	WB 1:500~1:1,000; IF 1:50~1:200
Host	Rabbit
Clonality	Polyclonal
Isotype	IgG
Label	Unconjugated
Immunogen	Recombinant fusion protein containing a sequence corresponding to amino acids 167-267 of human CD215/IL-15R alpha (NP_002180.1).
Format	Affinity purified polyclonal antibody supplied in PBS with 0.02% sodium azide and 50% glycerol, pH 7.3.
Storage	Shipped on wet ice. Store at -20°C. Stable for 24 months from date of receipt. Aliquoting is unnecessary for -20°C storage.
Precautions	Anti-CD215/IL-15R Alpha Rabbit pAb is for research use only and not for use in diagnostic or therapeutic procedures.

### Protein Information

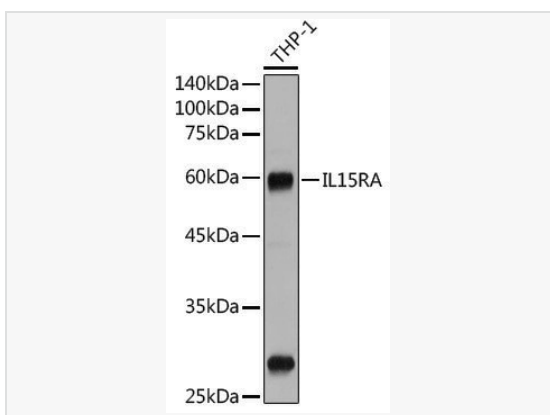
Synonyms	CD215; IL-15R alpha.
Calculated MW	Calculated MW: 28 kDa; Observed MW: 60 kDa
Uniprot ID	Q13261
Gene ID	3601
Background	This gene encodes a cytokine receptor that specifically binds interleukin 15 (IL15) with high affinity. The receptors of IL15 and IL2 share two subunits, IL2R beta and IL2R gamma. This forms the basis of many overlapping biological activities of IL15 and IL2. The protein encoded by this gene is structurally related to IL2R alpha, an additional IL2-specific alpha subunit necessary for high affinity IL2 binding. Unlike IL2RA, IL15RA is capable of binding IL15 with high affinity independent of other subunits, which suggests distinct roles between IL15 and IL2. This receptor is reported to enhance cell proliferation and expression of apoptosis inhibitor BCL2L1/BCL2-XL and BCL2. Multiple alternatively spliced transcript variants of this gene have been reported.



Immunofluorescence analysis of NIH/3T3 cells using CD215/IL-15R alpha Rabbit pAb (P105638) at dilution of 1:100 (40× lens). Secondary antibody: Cy3-conjugated Goat anti-Rabbit IgG (H+L) at 1:500 dilution. Blue: DAPI for nuclear staining.



Immunofluorescence analysis of PC-12 cells using CD215/IL-15R alpha Rabbit pAb (P105638) at dilution of 1:100 (40× lens). Secondary antibody: Cy3-conjugated Goat anti-Rabbit IgG (H+L) at 1:500 dilution. Blue: DAPI for nuclear staining.



Western blot analysis of lysates from THP-1 cells, using CD215/IL-15R alpha Rabbit pAb (P105638) at 1:1,000 dilution.  
Secondary antibody: HRP-conjugated Goat anti-Rabbit IgG (H+L) (LF102) at 1:10,000 dilution.  
Lysates/proteins: 25µg per lane.  
Blocking buffer: 3% nonfat dry milk in TBST.  
Detection: ECL Kit (SQ201).  
Exposure time: 180s.