

Anti-SREBF2 Rabbit pAb

Purified Rabbit Polyclonal Antibody

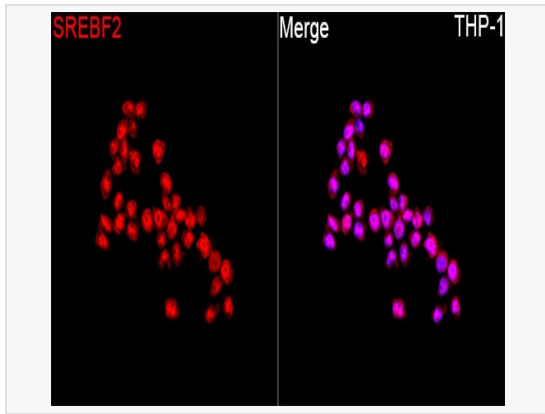
Catalog # P105454

Product Information

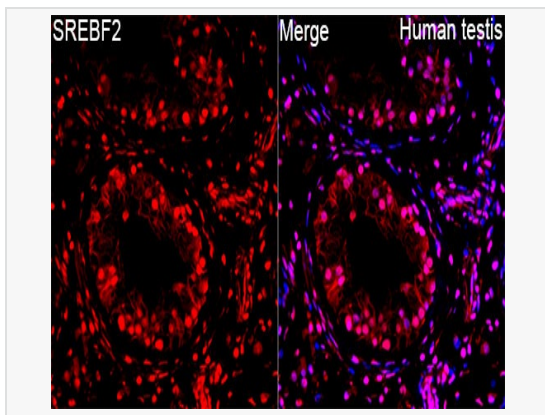
| | |
|-------------|---|
| Application | WB, IF (Cell)/ICC, ELISA |
| Reactivity | Human, Mouse |
| Dilution | WB 1:500~1:1,000; IF 1:50~1:200 |
| Host | Rabbit |
| Clonality | Polyclonal |
| Isotype | IgG |
| Label | Unconjugated |
| Immunogen | A synthetic peptide corresponding to a sequence within amino acids 401-500 of human SREBF2 (NP_004590.2). |
| Format | Affinity purified polyclonal antibody supplied in PBS with 0.02% sodium azide and 50% glycerol, pH 7.3. |
| Storage | Shipped on wet ice. Store at -20°C. Stable for 24 months from date of receipt. Aliquoting is unnecessary for -20°C storage. |
| Precautions | Anti-SREBF2 Rabbit pAb is for research use only and not for use in diagnostic or therapeutic procedures. |

Protein Information

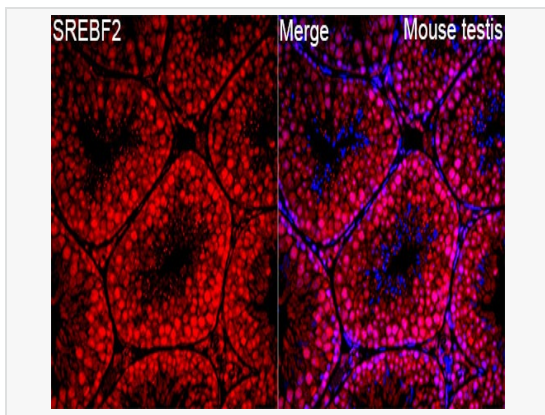
| | |
|---------------|--|
| Synonyms | SREBP2; bHLHd2; SREBP-2. |
| Calculated MW | Calculated MW: 124 kDa; Observed MW: 58 kDa |
| Uniprot ID | Q12772 |
| Gene ID | 6721 |
| Background | This gene encodes a member of the a ubiquitously expressed transcription factor that controls cholesterol homeostasis by regulating transcription of sterol-regulated genes. The encoded protein contains a basic helix-loop-helix-leucine zipper (bHLH-Zip) domain and binds the sterol regulatory element 1 motif. Alternate splicing results in multiple transcript variants. |



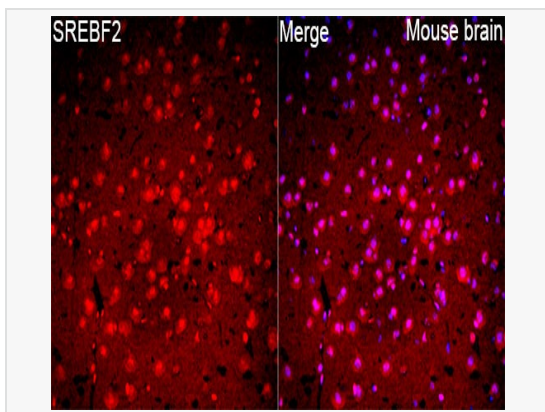
Immunofluorescence analysis of THP-1 cells using SREBF2 Rabbit pAb (P105454) at a dilution of 1:100 (40× lens). Secondary antibody: Cy3-conjugated Goat anti-Rabbit IgG (H+L) at 1:500 dilution. Blue: DAPI for nuclear staining.



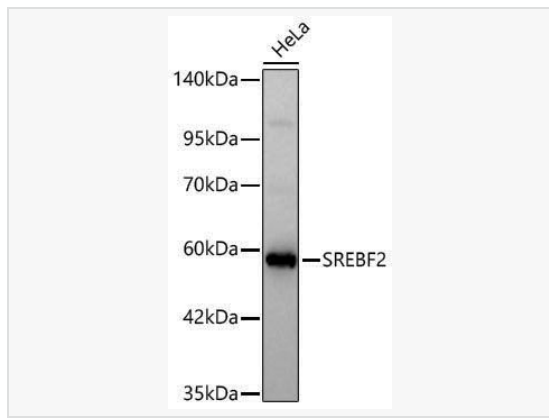
Immunofluorescence analysis of Human testis tissue using SREBF2 Rabbit pAb (P105454) at a dilution of 1:100 (40× lens). Secondary antibody: Cy3-conjugated Goat anti-Rabbit IgG (H+L) at 1:500 dilution. Blue: DAPI for nuclear staining. High pressure antigen retrieval performed with 0.01M Citrate Buffer (pH 6.0) prior to IF staining.



Immunofluorescence analysis of Mouse testis tissue using SREBF2 Rabbit pAb (P105454) at a dilution of 1:100 (40× lens). Secondary antibody: Cy3-conjugated Goat anti-Rabbit IgG (H+L) at 1:500 dilution. Blue: DAPI for nuclear staining. High pressure antigen retrieval performed with 0.01M Citrate Buffer (pH 6.0) prior to IF staining.



Immunofluorescence analysis of Mouse brain tissue using SREBF2 Rabbit pAb (P105454) at a dilution of 1:100 (40× lens). Secondary antibody: Cy3-conjugated Goat anti-Rabbit IgG (H+L) at 1:500 dilution. Blue: DAPI for nuclear staining. High pressure antigen retrieval performed with 0.01M Citrate Buffer (pH 6.0) prior to IF staining.



Western blot analysis of lysates from HeLa cells using SREBF2 Rabbit pAb (P105454) at 1:1,000 dilution incubated overnight at 4°C.

Secondary antibody: HRP-conjugated Goat anti-Rabbit IgG (H+L) (LF102) at 1:10,000 dilution.

Lysates/proteins: 25 µg per lane.

Blocking buffer: 3% nonfat dry milk in TBST.

Detection: ECL Kit

Exposure time: 60 s.