

Anti-LHB Rabbit pAb

Purified Rabbit Polyclonal Antibody

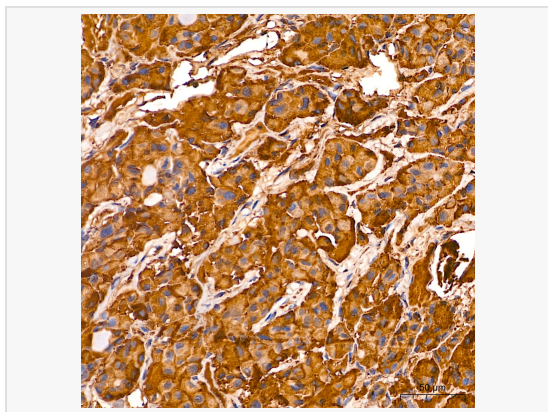
Catalog # P105422

Product Information

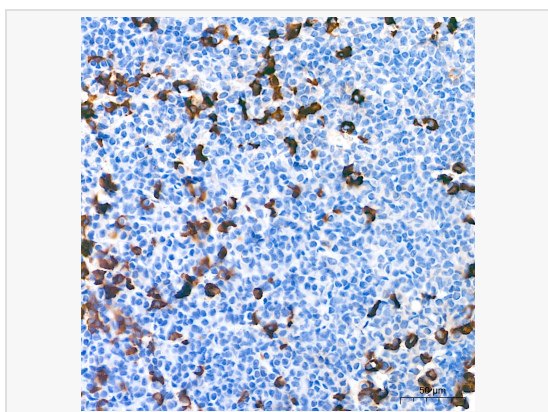
Application	WB, IHC-P/IF (Tissue-P), ELISA
Reactivity	Human, Mouse, Rat
Dilution	WB 1:500~1:2,000; IHC-P 1:2,000~1:8,000
Host	Rabbit
Clonality	Polyclonal
Isotype	IgG
Label	Unconjugated
Immunogen	Recombinant fusion protein containing a sequence corresponding to amino acids 62-141 of human LHB (NP_000885.1).
Format	Affinity purified polyclonal antibody supplied in PBS with 0.02% sodium azide and 50% glycerol, pH 7.3.
Storage	Shipped on wet ice. Store at -20°C. Stable for 24 months from date of receipt. Aliquoting is unnecessary for -20°C storage.
Precautions	Anti-LHB Rabbit pAb is for research use only and not for use in diagnostic or therapeutic procedures.

Protein Information

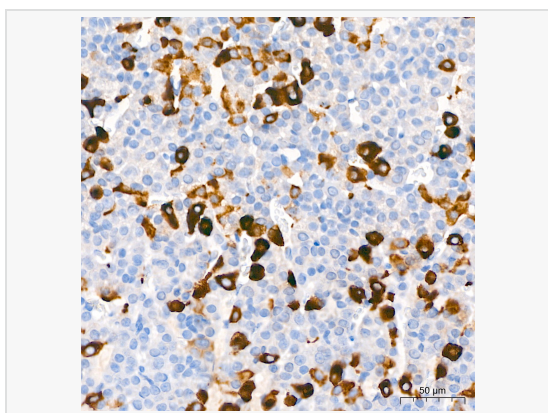
Synonyms	CGB4; HH23; LSH-B; LSH-beta; LHB.
Calculated MW	Calculated MW: 15 kDa; Observed MW: 18 kDa
Uniprot ID	P01229
Gene ID	3972
Background	This gene is a member of the glycoprotein hormone beta chain family and encodes the beta subunit of luteinizing hormone (LH). Glycoprotein hormones are heterodimers consisting of a common alpha subunit and an unique beta subunit which confers biological specificity. LH is expressed in the pituitary gland and promotes spermatogenesis and ovulation by stimulating the testes and ovaries to synthesize steroids. The genes for the beta chains of chorionic gonadotropin and for luteinizing hormone are contiguous on chromosome 19q13.3. Mutations in this gene are associated with hypogonadism which is characterized by infertility and pseudohermaphroditism.



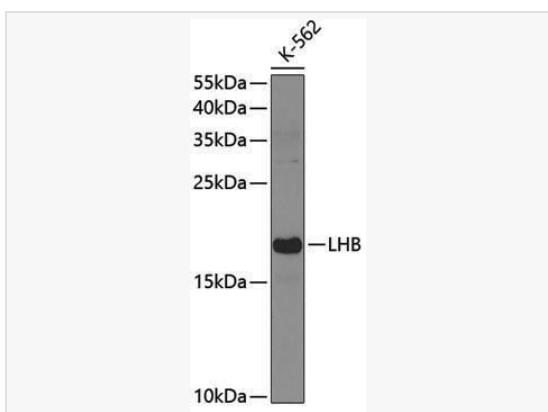
Immunohistochemistry analysis of paraffin-embedded Human pituitary gland tissue using LHB Rabbit pAb (P105422) at a dilution of 1:4000 (40× lens). High pressure antigen retrieval performed with 0.01M Tris-EDTA Buffer(pH 9.0) prior to IHC staining.



Immunohistochemistry analysis of paraffin-embedded Mouse pituitary tissue using LHB Rabbit pAb (P105422) at a dilution of 1:4000 (40× lens). High pressure antigen retrieval performed with 0.01M Tris-EDTA Buffer(pH 9.0) prior to IHC staining.



Immunohistochemistry analysis of paraffin-embedded Rat pituitary gland tissue using LHB Rabbit pAb (P105422) at a dilution of 1:4000 (40× lens). High pressure antigen retrieval performed with 0.01M Tris-EDTA Buffer(pH 9.0) prior to IHC staining.



Western blot analysis of lysates from K-562 cells, using LHB Rabbit pAb (P105422) at 1:400 dilution.
Secondary antibody: HRP-conjugated Goat anti-Rabbit IgG (H+L) (LF102) at 1:10,000 dilution.
Lysates/proteins: 25μg per lane.
Blocking buffer: 3% nonfat dry milk in TBST.
Detection: ECL Kit.
Exposure time: 60s.