

Anti-CDC45 Rabbit pAb

Purified Rabbit Polyclonal Antibody

Catalog # P104660

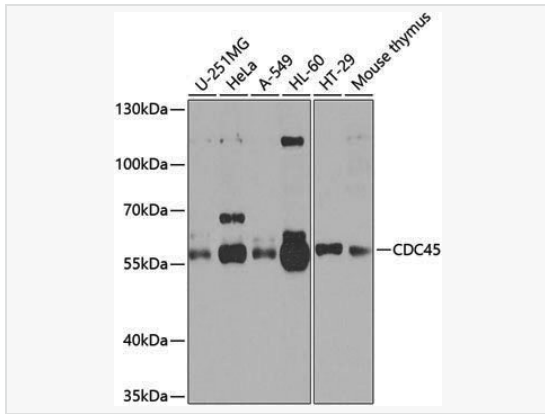
Product Information

Application	WB, ELISA
Reactivity	Human, Mouse, Rat
Dilution	WB 1:500~1:2,000
Host	Rabbit
Clonality	Polyclonal
Isotype	IgG
Label	Unconjugated
Immunogen	Recombinant fusion protein containing a sequence corresponding to amino acids 1-270 of human CDC45 (NP_003495.1).
Format	Affinity purified polyclonal antibody supplied in PBS with 0.02% sodium azide and 50% glycerol, pH 7.3.
Storage	Shipped on wet ice. Store at -20°C. Stable for 24 months from date of receipt. Aliquoting is unnecessary for -20°C storage.
Precautions	Anti-CDC45 Rabbit pAb is for research use only and not for use in diagnostic or therapeutic procedures.

Protein Information

Synonyms	CDC45L; MGORS7; CDC45L2; PORC-PI-1; CDC45.
Calculated MW	Calculated MW: 66 kDa; Observed MW: 60 kDa
Uniprot ID	O75419
Gene ID	8318
Background	The protein encoded by this gene was identified by its strong similarity with <i>Saccharomyces cerevisiae</i> Cdc45, an essential protein required to the initiation of DNA replication. Cdc45 is a member of the highly conserved multiprotein complex including Cdc6/Cdc18, the minichromosome maintenance proteins (MCMs) and DNA polymerase, which is important for early steps of DNA replication in eukaryotes. This protein has been shown to interact with MCM7 and DNA polymerase alpha. Studies of the similar gene in <i>Xenopus</i> suggested that this protein play a pivotal role in the loading of DNA polymerase alpha onto chromatin. Alternate splicing results in multiple transcript variants.

Validation Images



Western blot analysis of various lysates using CDC45 Rabbit pAb (P104660) at 1:1,000 dilution.

Secondary antibody: HRP-conjugated Goat anti-Rabbit IgG (H+L) (LF102) at 1:10,000 dilution.

Lysates/proteins: 25 μ g per lane.

Blocking buffer: 3% nonfat dry milk in TBST.

Detection: ECL Kit.

Exposure time: 15s.