

Anti-CASTOR1 Rabbit pAb

Purified Rabbit Polyclonal Antibody

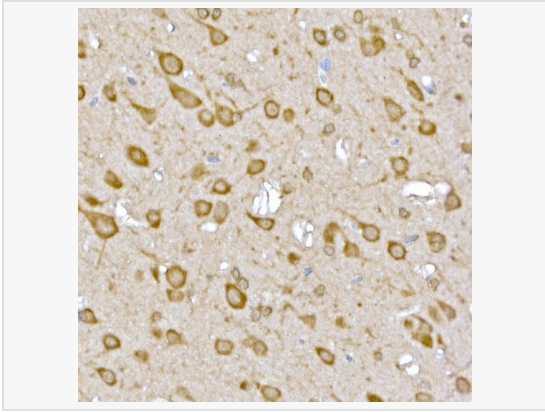
Catalog # P104647

Product Information

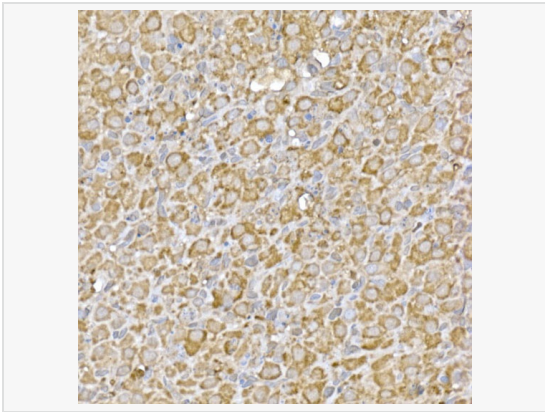
Application	WB, IHC-P/IF (Tissue-P), IF (Cell)/ICC, ELISA
Reactivity	Human, Mouse, Rat
Dilution	WB 1:500~1:1,000; IHC-P 1:50~1:200; IF 1:50~1:200
Host	Rabbit
Clonality	Polyclonal
Isotype	IgG
Label	Unconjugated
Immunogen	Recombinant fusion protein containing a sequence corresponding to amino acids 1-329 of human CASTOR1 (NP_001032755.1).
Format	Affinity purified polyclonal antibody supplied in PBS with 0.02% sodium azide and 50% glycerol, pH 7.3.
Storage	Shipped on wet ice. Store at -20°C. Stable for 24 months from date of receipt. Aliquoting is unnecessary for -20°C storage.
Precautions	Anti-CASTOR1 Rabbit pAb is for research use only and not for use in diagnostic or therapeutic procedures.

Protein Information

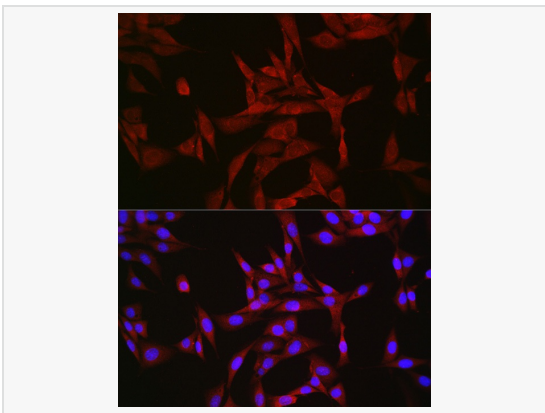
Synonyms	GATSL3; CASTOR1.
Calculated MW	Calculated MW: 36 kDa; Observed MW: 39 kDa
Uniprot ID	Q8WTX7
Gene ID	652968
Background	Enables arginine binding activity and identical protein binding activity. Involved in cellular response to L-arginine and negative regulation of TORC1 signaling. Located in cytosol. Colocalizes with GATOR2 complex.



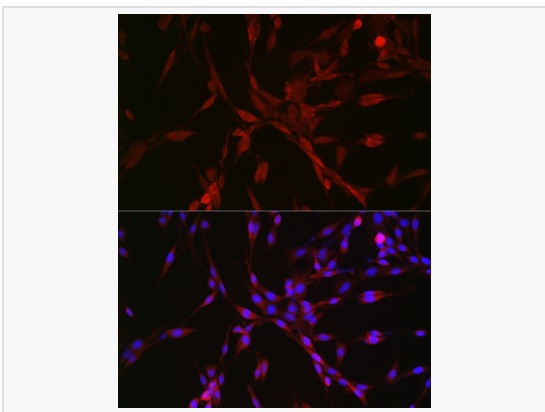
Immunohistochemistry analysis of paraffin-embedded Rat brain using CASTOR1 Rabbit pAb (P104647) at dilution of 1:50 (40× lens). High pressure antigen retrieval performed with 0.01M Citrate Bufferr (pH 6.0) prior to IHC staining.



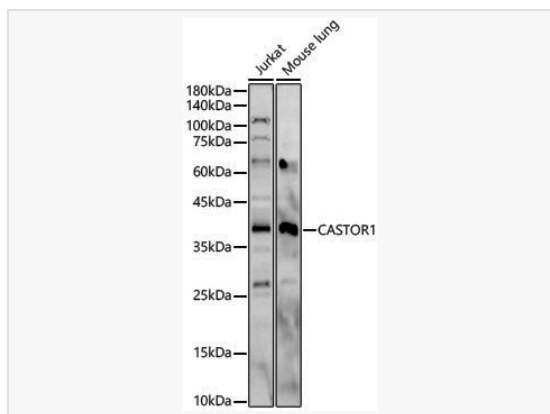
Immunohistochemistry analysis of paraffin-embedded Rat ovary using CASTOR1 Rabbit pAb (P104647) at dilution of 1:50 (40× lens). High pressure antigen retrieval performed with 0.01M Citrate Bufferr (pH 6.0) prior to IHC staining.



Immunofluorescence analysis of NIH/3T3 cells using CASTOR1 Rabbit pAb (P104647) at dilution of 1:50 (40× lens). Secondary antibody: Cy3-conjugated Goat anti-Rabbit IgG (H+L) at 1:500 dilution. Blue: DAPI for nuclear staining.



Immunofluorescence analysis of PC-12 cells using CASTOR1 Rabbit pAb (P104647) at dilution of 1:50 (40× lens). Secondary antibody: Cy3-conjugated Goat anti-Rabbit IgG (H+L) at 1:500 dilution. Blue: DAPI for nuclear staining.



Western blot analysis of various lysates, using CASTOR1 Rabbit pAb (P104647) at 1:1,000 dilution.

Secondary antibody: HRP-conjugated Goat anti-Rabbit IgG (H+L) (LF102) at 1:10,000 dilution.

Lysates/proteins: 25 μ g per lane.

Blocking buffer: 3% nonfat dry milk in TBST.

Detection: ECL Kit.

Exposure time: 60s.