

## Anti-NKD1 Rabbit pAb

Purified Rabbit Polyclonal Antibody

Catalog # P104072

### Product Information

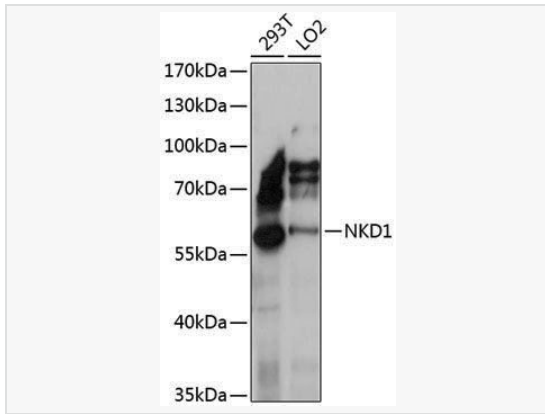
Application	WB, ELISA
Reactivity	Human
Dilution	WB 1:500~1:2,000
Host	Rabbit
Clonality	Polyclonal
Isotype	IgG
Label	Unconjugated
Immunogen	A synthetic peptide corresponding to a sequence within amino acids 1-100 of human NKD1 (NP_149110.1).
Format	Affinity purified polyclonal antibody supplied in PBS with 0.02% sodium azide and 50% glycerol, pH 7.3.
Storage	Shipped on wet ice. Store at -20°C. Stable for 24 months from date of receipt. Aliquoting is unnecessary for -20°C storage.
Precautions	Anti-NKD1 Rabbit pAb is for research use only and not for use in diagnostic or therapeutic procedures.

### Protein Information

Synonyms	Naked1; NKD1.
Calculated MW	Calculated MW: 52 kDa; Observed MW: 60 kDa
Uniprot ID	Q969G9
Gene ID	85407
Background	In the mouse, Nkd is a Dishevelled (see DVL1; MIM 601365)-binding protein that functions as a negative regulator of the Wnt (see WNT1; MIM 164820)-beta-catenin (see MIM 116806)-Tcf (see MIM 602272) signaling pathway.

## Validation Images

---



Western blot analysis of various lysates using NKD1 Rabbit pAb (P104072) at 1:1,000 dilution.

Secondary antibody: HRP-conjugated Goat anti-Rabbit IgG (H+L) (LF102) at 1:10,000 dilution.

Lysates/proteins: 25 $\mu$ g per lane.

Blocking buffer: 3% nonfat dry milk in TBST.

Detection: ECL Kit.

Exposure time: 5s.