

## Anti-SCNN1B Rabbit pAb

Purified Rabbit Polyclonal Antibody

Catalog # P103635

### Product Information

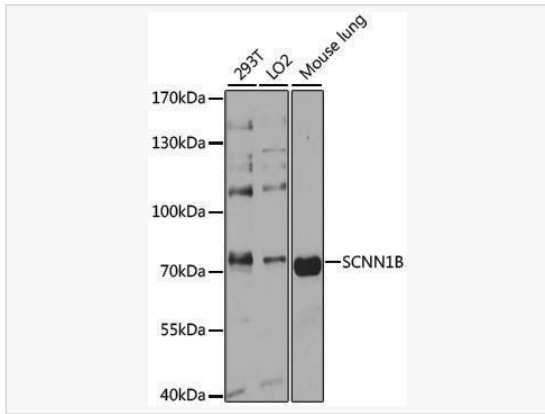
Application	WB, ELISA
Reactivity	Human, Mouse
Dilution	WB 1:500~1:2,000
Host	Rabbit
Clonality	Polyclonal
Isotype	IgG
Label	Unconjugated
Immunogen	Recombinant fusion protein containing a sequence corresponding to amino acids 406-640 of human SCNN1B (NP_000327.2).
Format	Affinity purified polyclonal antibody supplied in PBS with 0.02% sodium azide and 50% glycerol, pH 7.3.
Storage	Shipped on wet ice. Store at -20°C. Stable for 24 months from date of receipt. Aliquoting is unnecessary for -20°C storage.
Precautions	Anti-SCNN1B Rabbit pAb is for research use only and not for use in diagnostic or therapeutic procedures.

### Protein Information

Synonyms	BESC1; ENaCb; SCNEB; LIDLS1; PHA1B2; ENaCbeta; beta-ENaC; beta-NaCH; SCNN1B.
Calculated MW	Calculated MW: 73 kDa; Observed MW: 75 kDa
Uniprot ID	P51168
Gene ID	6338
Background	Nonvoltage-gated, amiloride-sensitive, sodium channels control fluid and electrolyte transport across epithelia in many organs. These channels are heteromeric complexes consisting of 3 subunits: alpha, beta, and gamma. This gene encodes the beta subunit, and mutations in this gene have been associated with pseudohypoaldosteronism type 1 (PHA1), and Liddle syndrome.

## Validation Images

---



Western blot analysis of various lysates using SCNN1B Rabbit pAb (P103635) at 1:3,000 dilution.

Secondary antibody: HRP-conjugated Goat anti-Rabbit IgG (H+L) (LF102) at 1:10,000 dilution.

Lysates/proteins: 25 $\mu$ g per lane.

Blocking buffer: 3% nonfat dry milk in TBST.

Detection: ECL Kit.

Exposure time: 90s.