

Anti-PLA2G4D Rabbit pAb

Purified Rabbit Polyclonal Antibody

Catalog # P102468

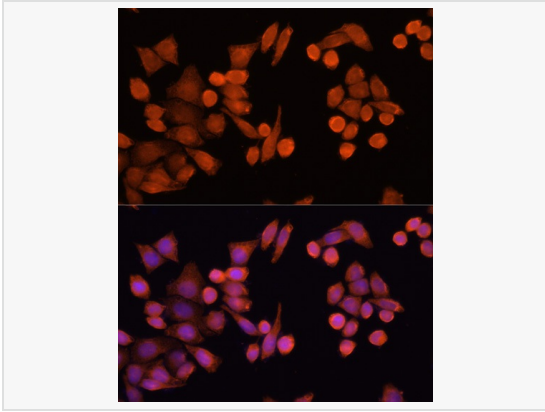
Product Information

Application	IF (Cell)/ICC, ELISA
Reactivity	Human
Dilution	IF 1:50~1:200
Host	Rabbit
Clonality	Polyclonal
Isotype	IgG
Label	Unconjugated
Immunogen	Recombinant fusion protein containing a sequence corresponding to amino acids 510-680 of human PLA2G4D (NP_828848.3).
Format	Affinity purified polyclonal antibody supplied in PBS with 0.02% sodium azide and 50% glycerol, pH 7.3.
Storage	Shipped on wet ice. Store at -20°C. Stable for 24 months from date of receipt. Aliquoting is unnecessary for -20°C storage.
Precautions	Anti-PLA2G4D Rabbit pAb is for research use only and not for use in diagnostic or therapeutic procedures.

Protein Information

Synonyms	cPLA2delta; PLA2G4D.
Calculated MW	Calculated MW: 92 kDa
Uniprot ID	Q86XP0
Gene ID	283748
Background	The phospholipase A2 enzyme family, including PLA2G4D, catalyze the hydrolysis of glycerophospholipids at the sn-2 position and then liberate free fatty acids and lysophospholipids (Chiba et al., 2004 [PubMed 14709560]).

Validation Images



Immunofluorescence analysis of HeLa cells using PLA2G4D Rabbit pAb (P102468) at dilution of 1:100 (40× lens). Secondary antibody: Cy3-conjugated Goat anti-Rabbit IgG (H+L) at 1:500 dilution. Blue: DAPI for nuclear staining.