

Anti-BATF3 Rabbit pAb

Purified Rabbit Polyclonal Antibody

Catalog # P102376

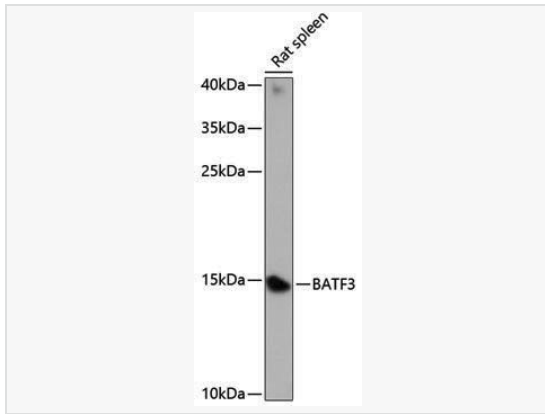
Product Information

Application	WB, ELISA
Reactivity	Rat
Dilution	WB 1:500~1:2,000
Host	Rabbit
Clonality	Polyclonal
Isotype	IgG
Label	Unconjugated
Immunogen	Recombinant fusion protein containing a sequence corresponding to amino acids 1-127 of human BATF3 (NP_061134.1).
Format	Affinity purified polyclonal antibody supplied in PBS with 0.02% sodium azide and 50% glycerol, pH 7.3.
Storage	Shipped on wet ice. Store at -20°C. Stable for 24 months from date of receipt. Aliquoting is unnecessary for -20°C storage.
Precautions	Anti-BATF3 Rabbit pAb is for research use only and not for use in diagnostic or therapeutic procedures.

Protein Information

Synonyms	JDP1; SNFT; JUNDM1; BATF3.
Calculated MW	Calculated MW: 14 kDa; Observed MW: 14 kDa
Uniprot ID	Q9NR55
Gene ID	55509
Background	This gene encodes a member of the basic leucine zipper protein family. The encoded protein functions as a transcriptional repressor when heterodimerizing with JUN. The protein may play a role in repression of interleukin-2 and matrix metalloproteinase-1 transcription.

Validation Images



Western blot analysis of lysates from rat spleen, using BATF3 Rabbit pAb (P102376) at 1:1,000 dilution.

Secondary antibody: HRP-conjugated Goat anti-Rabbit IgG (H+L) (LF102) at 1:10,000 dilution.

Lysates/proteins: 25 μ g per lane.

Blocking buffer: 3% nonfat dry milk in TBST.

Detection: ECL Kit.

Exposure time: 30s.