

Anti-ADAM11 Rabbit pAb

Purified Rabbit Polyclonal Antibody

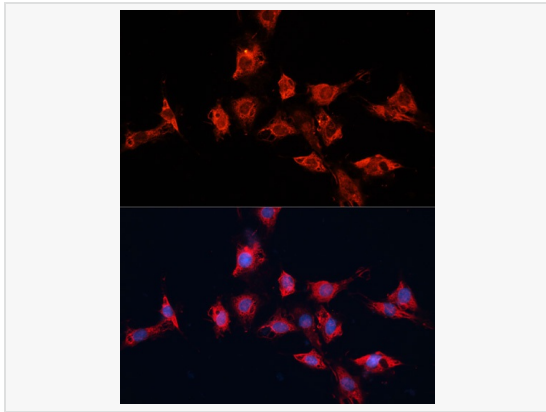
Catalog # P102287

Product Information

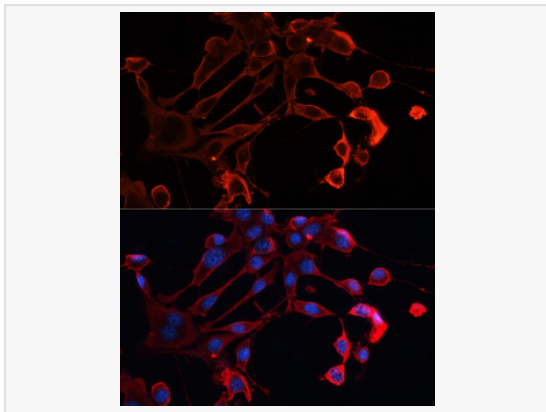
| | |
|-------------|---|
| Application | WB, IF (Cell)/ICC, ELISA |
| Reactivity | Human, Mouse, Rat |
| Dilution | WB 1:500~1:2,000; IF 1:50~1:200 |
| Host | Rabbit |
| Clonality | Polyclonal |
| Isotype | IgG |
| Label | Unconjugated |
| Immunogen | Recombinant fusion protein containing a sequence corresponding to amino acids 290-430 of human ADAM11 (NP_002381.2). |
| Format | Affinity purified polyclonal antibody supplied in PBS with 0.02% sodium azide and 50% glycerol, pH 7.3. |
| Storage | Shipped on wet ice. Store at -20°C. Stable for 24 months from date of receipt. Aliquoting is unnecessary for -20°C storage. |
| Precautions | Anti-ADAM11 Rabbit pAb is for research use only and not for use in diagnostic or therapeutic procedures. |

Protein Information

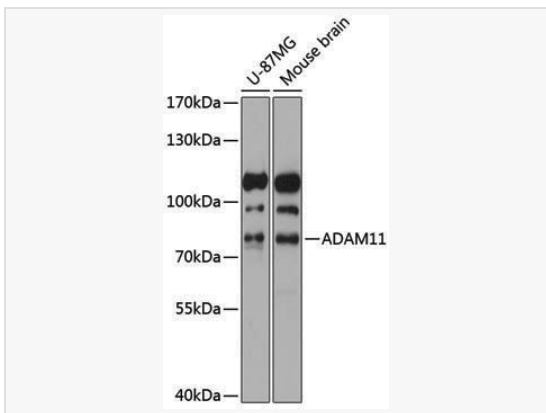
| | |
|---------------|--|
| Synonyms | MDC; ADAM11. |
| Calculated MW | Calculated MW: 83 kDa; Observed MW: 83 kDa |
| Uniprot ID | O75078 |
| Gene ID | 4185 |
| Background | This gene encodes a member of the ADAM (a disintegrin and metalloprotease) protein family. Members of this family are membrane-anchored proteins structurally related to snake venom disintegrins, and have been implicated in a variety of biological processes involving cell-cell and cell-matrix interactions, including fertilization, muscle development, and neurogenesis. The encoded preproprotein is proteolytically processed to generate the mature protease. This gene represents a candidate tumor suppressor gene for human breast cancer based on its location within a minimal region of chromosome 17q21 previously defined by tumor deletion mapping. Alternative splicing results in multiple transcript variants, at least one of which encodes an isoform that is proteolytically processed. |



Immunofluorescence analysis of C6 cells using ADAM11 Rabbit pAb (P102287) at dilution of 1:100. Secondary antibody: Cy3-conjugated Goat anti-Rabbit IgG (H+L) at 1:500 dilution. Blue: DAPI for nuclear staining.



Immunofluorescence analysis of NIH/3T3 cells using ADAM11 Rabbit pAb (P102287) at dilution of 1:100. Secondary antibody: Cy3-conjugated Goat anti-Rabbit IgG (H+L) at 1:500 dilution. Blue: DAPI for nuclear staining.



Western blot analysis of various lysates using ADAM11 Rabbit pAb (P102287) at 1:1,000 dilution.
Secondary antibody: HRP-conjugated Goat anti-Rabbit IgG (H+L) (LF102) at 1:10,000 dilution.
Lysates/proteins: 25µg per lane.
Blocking buffer: 3% nonfat dry milk in TBST.
Detection: ECL Kit.
Exposure time: 15s.