

## Anti-GUCY2F Rabbit pAb

Purified Rabbit Polyclonal Antibody

Catalog # P102022

### Product Information

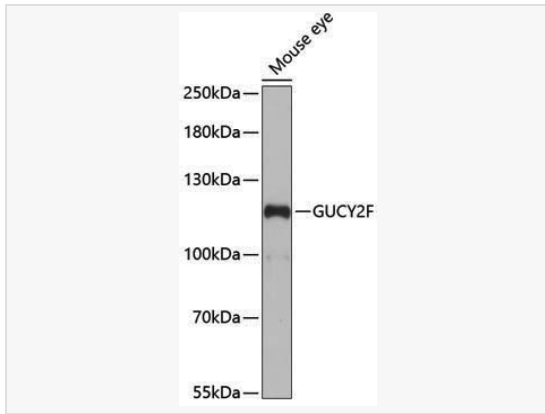
Application	WB, ELISA
Reactivity	Mouse, Rat
Dilution	WB 1:500~1:2,000
Host	Rabbit
Clonality	Polyclonal
Isotype	IgG
Label	Unconjugated
Immunogen	Recombinant fusion protein containing a sequence corresponding to amino acids 250-460 of human GUCY2F (NP_001513.2).
Format	Affinity purified polyclonal antibody supplied in PBS with 0.02% sodium azide and 50% glycerol, pH 7.3.
Storage	Shipped on wet ice. Store at -20°C. Stable for 24 months from date of receipt. Aliquoting is unnecessary for -20°C storage.
Precautions	Anti-GUCY2F Rabbit pAb is for research use only and not for use in diagnostic or therapeutic procedures.

### Protein Information

Synonyms	CYGF; GC-F; GUC2F; GUC2DL; RETGC-2; ROS-GC2; GUCY2F.
Calculated MW	Calculated MW: 125 kDa; Observed MW: 125 kDa
Uniprot ID	P51841
Gene ID	2986
Background	The protein encoded by this gene is a guanylyl cyclase found predominantly in photoreceptors in the retina. The encoded protein is thought to be involved in resynthesis of cGMP after light activation of the visual signal transduction cascade, allowing a return to the dark state. This protein is a single-pass type I membrane protein. Defects in this gene may be a cause of X-linked retinitis pigmentosa.

## Validation Images

---



Western blot analysis of lysates from mouse eye, using GUCY2F Rabbit pAb (P102022) at 1:1,000 dilution.

Secondary antibody: HRP-conjugated Goat anti-Rabbit IgG (H+L) (LF102) at 1:10,000 dilution.

Lysates/proteins: 25 $\mu$ g per lane.

Blocking buffer: 3% nonfat dry milk in TBST.

Detection: ECL Kit.

Exposure time: 90s.