

Anti-Delta-sarcoglycan/SGCD Rabbit pAb

Purified Rabbit Polyclonal Antibody

Catalog # P101803

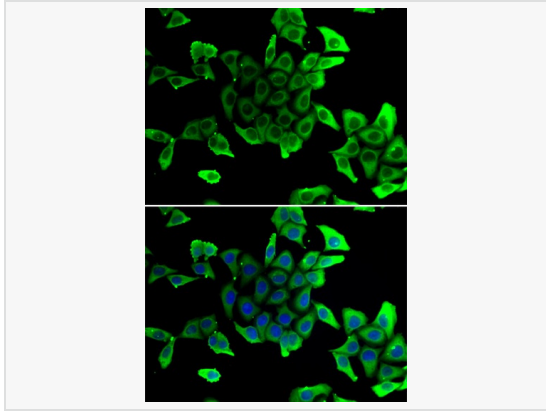
Product Information

Application	WB, IF (Cell)/ICC, ELISA
Reactivity	Human, Mouse, Rat
Dilution	WB 1:500~1:2,000; IF 1:50~1:200
Host	Rabbit
Clonality	Polyclonal
Isotype	IgG
Label	Unconjugated
Immunogen	Recombinant fusion protein containing a sequence corresponding to amino acids 61-290 of human Delta-sarcoglycan (Delta-sarcoglycan (SGCD)) (NP_000328.2).
Format	Affinity purified polyclonal antibody supplied in PBS with 0.02% sodium azide and 50% glycerol, pH 7.3.
Storage	Shipped on wet ice. Store at -20°C. Stable for 24 months from date of receipt. Aliquoting is unnecessary for -20°C storage.
Precautions	Anti-Delta-sarcoglycan/SGCD Rabbit pAb is for research use only and not for use in diagnostic or therapeutic procedures.

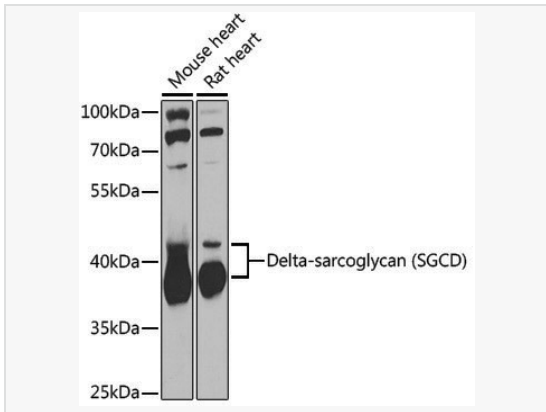
Protein Information

Synonyms	SGD; DAGD; 35DAG; CMD1L; SGCDP; LGMDR6; SG-delta; Delta-sarcoglycan (SGCD).
Calculated MW	Calculated MW: 32 kDa; Observed MW: 37-42 kDa
Uniprot ID	Q92629
Gene ID	6444
Background	The protein encoded by this gene is one of the four known components of the sarcoglycan complex, which is a subcomplex of the dystrophin-glycoprotein complex (DGC). DGC forms a link between the F-actin cytoskeleton and the extracellular matrix. This protein is expressed most abundantly in skeletal and cardiac muscle. Mutations in this gene have been associated with autosomal recessive limb-girdle muscular dystrophy and dilated cardiomyopathy. Alternatively spliced transcript variants encoding distinct isoforms have been observed for this gene.

Validation Images



Immunofluorescence analysis of U2OS cells using Delta-sarcoglycan (SGCD) Rabbit pAb (P101803). Secondary antibody: Cy3-conjugated Goat anti-Rabbit IgG (H+L) at 1:500 dilution. Blue: DAPI for nuclear staining.



Western blot analysis of various lysates using Delta-sarcoglycan (SGCD) Rabbit pAb (P101803) at 1:1,000 dilution. Secondary antibody: HRP-conjugated Goat anti-Rabbit IgG (H+L) (LF102) at 1:10,000 dilution.

Lysates/proteins: 25 μ g per lane.

Blocking buffer: 3% nonfat dry milk in TBST.

Detection: ECL Kit.

Exposure time: 90s.