

## Anti-RBM26 Rabbit pAb

Purified Rabbit Polyclonal Antibody

Catalog # P101685

### Product Information

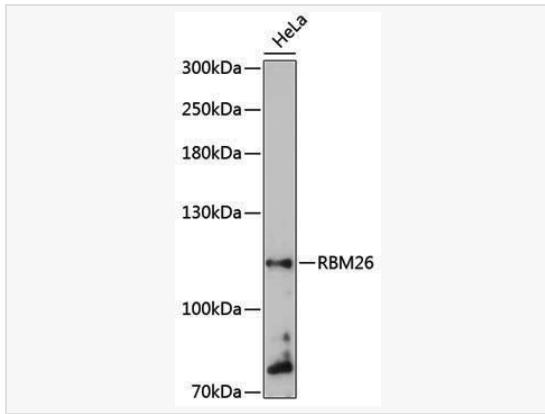
Application	WB, ELISA
Reactivity	Human
Dilution	WB 1:1,000~1:2,000
Host	Rabbit
Clonality	Polyclonal
Isotype	IgG
Label	Unconjugated
Immunogen	Recombinant fusion protein containing a sequence corresponding to amino acids 65-140 of human RBM26 (NP_071401.3).
Format	Affinity purified polyclonal antibody supplied in PBS with 0.02% sodium azide and 50% glycerol, pH 7.3.
Storage	Shipped on wet ice. Store at -20°C. Stable for 24 months from date of receipt. Aliquoting is unnecessary for -20°C storage.
Precautions	Anti-RBM26 Rabbit pAb is for research use only and not for use in diagnostic or therapeutic procedures.

### Protein Information

Synonyms	ARRS2; SE70-2; ZC3H17; PRO1777; C13orf10; PPP1R132; RBM26.
Calculated MW	Calculated MW: 114 kDa; Observed MW: 113 kDa
Uniprot ID	Q5T8P6
Gene ID	64062
Background	Enables RNA binding activity. Predicted to be involved in mRNA processing. Predicted to be active in nucleus.

## Validation Images

---



Western blot analysis of lysates from HeLa cells, using RBM26 Rabbit pAb (P101685) at 1:3,000 dilution.

Secondary antibody: HRP-conjugated Goat anti-Rabbit IgG (H+L) (LF102) at 1:10,000 dilution.

Lysates/proteins: 25 $\mu$ g per lane.

Blocking buffer: 3% nonfat dry milk in TBST.

Detection: ECL Kit.

Exposure time: 90s.