

## Anti-SERPINB13 Rabbit pAb

Purified Rabbit Polyclonal Antibody

Catalog # P101597

### Product Information

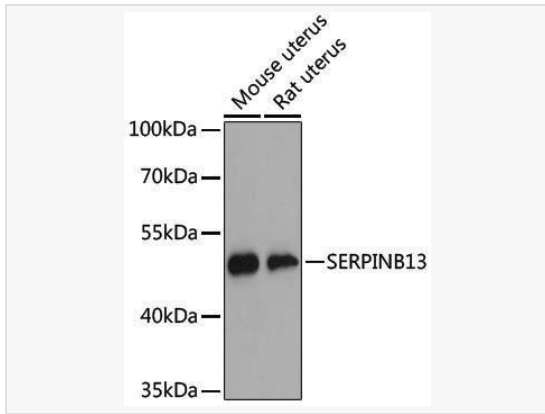
Application	WB, IF (Cell)/ICC, ELISA
Reactivity	Human, Mouse, Rat
Dilution	WB 1:500~1:2,000; IF 1:50~1:100
Host	Rabbit
Clonality	Polyclonal
Isotype	IgG
Label	Unconjugated
Immunogen	Recombinant fusion protein containing a sequence corresponding to amino acids 1-140 of human SERPINB13 (NP_036529.1).
Format	Affinity purified polyclonal antibody supplied in PBS with 0.02% sodium azide and 50% glycerol, pH 7.3.
Storage	Shipped on wet ice. Store at -20°C. Stable for 24 months from date of receipt. Aliquoting is unnecessary for -20°C storage.
Precautions	Anti-SERPINB13 Rabbit pAb is for research use only and not for use in diagnostic or therapeutic procedures.

### Protein Information

Synonyms	HUR7; P113; headpin; HSHUR7SEQ; SERPINB13.
Calculated MW	Calculated MW: 44 kDa; Observed MW: 44 kDa
Uniprot ID	Q9UIV8
Gene ID	5275
Background	The protein encoded by this gene is a member of the serpin family of serine protease inhibitors. The encoded protein inhibits the activity of cathepsin K and is itself transcriptionally repressed by RUNX1. This gene is downregulated in many types of cancer.

## Validation Images

---



Western blot analysis of various lysates using SERPINB13 Rabbit pAb (P101597) at 1:3,000 dilution.

Secondary antibody: HRP-conjugated Goat anti-Rabbit IgG (H+L) (LF102) at 1:10,000 dilution.

Lysates/proteins: 25 $\mu$ g per lane.

Blocking buffer: 3% nonfat dry milk in TBST.

Detection: ECL Kit.

Exposure time: 90s.