

Anti-PARP8 Rabbit pAb

Purified Rabbit Polyclonal Antibody

Catalog # P101316

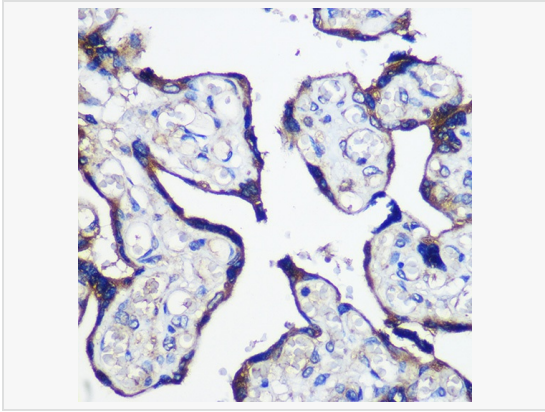
Product Information

Application	WB, IHC-P/IF (Tissue-P), ELISA
Reactivity	Human, Mouse, Rat
Dilution	WB 1:500~1:2,000; IHC-P 1:50~1:200
Host	Rabbit
Clonality	Polyclonal
Isotype	IgG
Label	Unconjugated
Immunogen	Recombinant fusion protein containing a sequence corresponding to amino acids 1-300 of human PARP8 (NP_001171527.1).
Format	Affinity purified polyclonal antibody supplied in PBS with 0.02% sodium azide and 50% glycerol, pH 7.3.
Storage	Shipped on wet ice. Store at -20°C. Stable for 24 months from date of receipt. Aliquoting is unnecessary for -20°C storage.
Precautions	Anti-PARP8 Rabbit pAb is for research use only and not for use in diagnostic or therapeutic procedures.

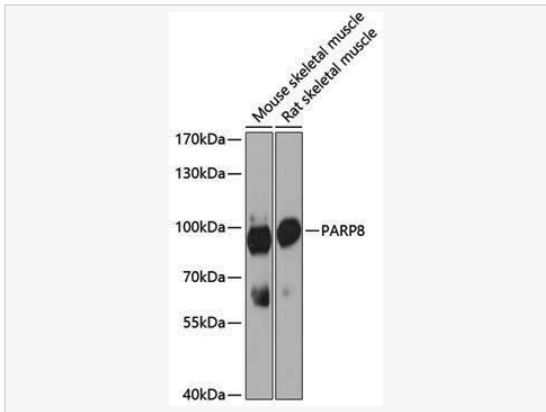
Protein Information

Synonyms	ARTD16; pART16; PARP8.
Calculated MW	Calculated MW: 96 kDa; Observed MW: 96 kDa
Uniprot ID	Q8N3A8
Gene ID	79668
Background	Enables protein ADP-ribosylase activity. Involved in protein auto-ADP-ribosylation and protein mono-ADP-ribosylation.

Validation Images



Immunohistochemistry analysis of paraffin-embedded Human placenta using PARP8 Rabbit pAb (P101316) at dilution of 1:100 (40 \times lens). Microwave antigen retrieval performed with 0.01M PBS Buffer (pH 7.2) prior to IHC staining.



Western blot analysis of various lysates using PARP8 Rabbit pAb (P101316) at 1:3,000 dilution.

Secondary antibody: HRP-conjugated Goat anti-Rabbit IgG (H+L) (LF102) at 1:10,000 dilution.

Lysates/proteins: 25 μ g per lane.

Blocking buffer: 3% nonfat dry milk in TBST.

Detection: ECL Kit.

Exposure time: 90s.