

## Anti-AKAP6 Rabbit pAb

Purified Rabbit Polyclonal Antibody

Catalog # P101306

### Product Information

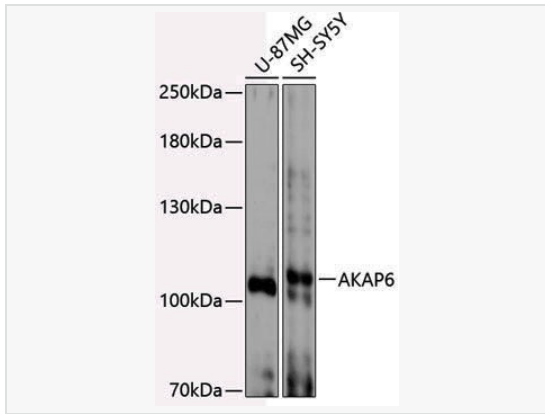
Application	WB, ELISA
Reactivity	Human
Dilution	WB 1:500~1:1,000
Host	Rabbit
Clonality	Polyclonal
Isotype	IgG
Label	Unconjugated
Immunogen	Recombinant fusion protein containing a sequence corresponding to amino acids 1-270 of human AKAP6 (NP_004265.3).
Format	Affinity purified polyclonal antibody supplied in PBS with 0.02% sodium azide and 50% glycerol, pH 7.3.
Storage	Shipped on wet ice. Store at -20°C. Stable for 24 months from date of receipt. Aliquoting is unnecessary for -20°C storage.
Precautions	Anti-AKAP6 Rabbit pAb is for research use only and not for use in diagnostic or therapeutic procedures.

### Protein Information

Synonyms	ADAP6; PRKA6; mAKAP; ADAP100; AKAP100; AKAP6.
Calculated MW	Calculated MW: 257 kDa; Observed MW: 105 kDa
Uniprot ID	Q13023
Gene ID	9472
Background	The A-kinase anchor proteins (AKAPs) are a group of structurally diverse proteins, which have the common function of binding to the regulatory subunit of protein kinase A (PKA) and confining the holoenzyme to discrete locations within the cell. This gene encodes a member of the AKAP family. The encoded protein is highly expressed in various brain regions and cardiac and skeletal muscle. It is specifically localized to the sarcoplasmic reticulum and nuclear membrane, and is involved in anchoring PKA to the nuclear membrane or sarcoplasmic reticulum.

## Validation Images

---



Western blot analysis of various lysates using AKAP6 Rabbit pAb (P101306) at 1:3,000 dilution.

Secondary antibody: HRP-conjugated Goat anti-Rabbit IgG (H+L) (LF102) at 1:10,000 dilution.

Lysates/proteins: 25µg per lane.

Blocking buffer: 3% nonfat dry milk in TBST.

Detection: ECL Enhanced Kit.

Exposure time: 90s.