

Anti-BHLHE41 Rabbit pAb

Purified Rabbit Polyclonal Antibody

Catalog # P100507

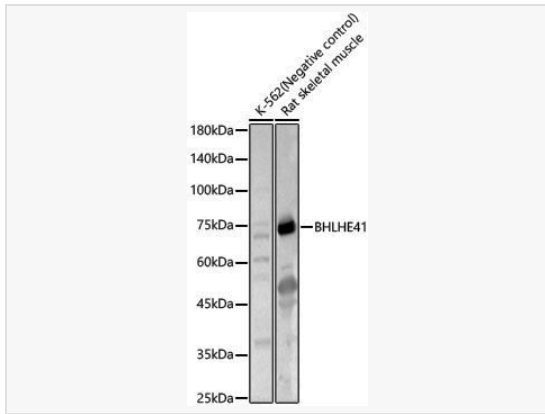
Product Information

Application	WB, ELISA
Reactivity	Human, Rat
Dilution	WB 1:1,000~1:2,000
Host	Rabbit
Clonality	Polyclonal
Isotype	IgG
Label	Unconjugated
Immunogen	Recombinant fusion protein containing a sequence corresponding to amino acids 120-280 of human BHLHE41 (NP_110389.1).
Format	Affinity purified polyclonal antibody supplied in PBS with 0.02% sodium azide and 50% glycerol, pH 7.3.
Storage	Shipped on wet ice. Store at -20°C. Stable for 24 months from date of receipt. Aliquoting is unnecessary for -20°C storage.
Precautions	Anti-BHLHE41 Rabbit pAb is for research use only and not for use in diagnostic or therapeutic procedures.

Protein Information

Synonyms	DEC2; FNSS1; hDEC2; BHLHB3; SHARP1; BHLHE41.
Calculated MW	Calculated MW: 50 kDa; Observed MW: 75 kDa
Uniprot ID	Q9C0J9
Gene ID	79365
Background	This gene encodes a basic helix-loop-helix protein expressed in various tissues. The encoded protein can interact with ARNTL or compete for E-box binding sites in the promoter of PER1 and repress CLOCK/ARNTL's transactivation of PER1. This gene is believed to be involved in the control of circadian rhythm and cell differentiation. Defects in this gene are associated with the short sleep phenotype.

Validation Images



Western blot analysis of various lysates, using BHLHE41 Rabbit pAb (P100507) at 1:1500 dilution.

Secondary antibody: HRP-conjugated Goat anti-Rabbit IgG (H+L) (LF102) at 1:10,000 dilution.

Lysates/proteins: 25µg per lane.

Blocking buffer: 3% nonfat dry milk in TBST.

Detection: ECL Kit.

Exposure time: 30s.