

## Anti-TRIB1 Rabbit pAb

Purified Rabbit Polyclonal Antibody

Catalog # P100368

### Product Information

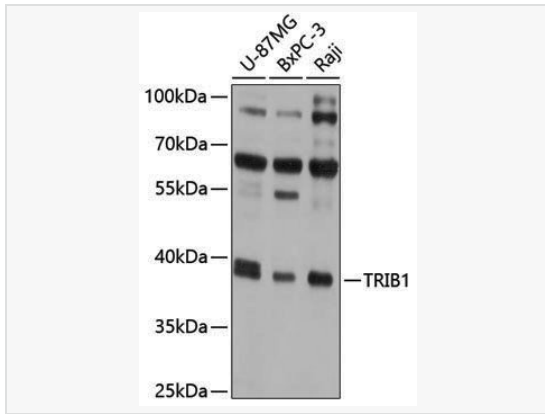
Application	WB, ELISA
Reactivity	Human
Dilution	WB 1:1,000~1:4,000
Host	Rabbit
Clonality	Polyclonal
Isotype	IgG
Label	Unconjugated
Immunogen	Recombinant fusion protein containing a sequence corresponding to amino acids 203-372 of human TRIB1 (NP_079471.1).
Format	Affinity purified polyclonal antibody supplied in PBS with 0.02% sodium azide and 50% glycerol, pH 7.3.
Storage	Shipped on wet ice. Store at -20°C. Stable for 24 months from date of receipt. Aliquoting is unnecessary for -20°C storage.
Precautions	Anti-TRIB1 Rabbit pAb is for research use only and not for use in diagnostic or therapeutic procedures.

### Protein Information

Synonyms	C8FW; GIG2; TRBI; GIG-2; SKIP1; TRB-1; TRIB1.
Calculated MW	Calculated MW: 41 kDa; Observed MW: 38 kDa
Uniprot ID	Q96RU8
Gene ID	10221
Background	Enables mitogen-activated protein kinase kinase binding activity and protein kinase inhibitor activity. Involved in several processes, including JNK cascade; negative regulation of lipopolysaccharide-mediated signaling pathway; and regulation of protein kinase activity. Located in cytoplasm and nucleus.

## Validation Images

---



Western blot analysis of various lysates using TRIB1 Rabbit pAb (P100368) at 1:1,000 dilution.

Secondary antibody: HRP-conjugated Goat anti-Rabbit IgG (H+L) (LF102) at 1:10,000 dilution.

Lysates/proteins: 25µg per lane.

Blocking buffer: 3% nonfat dry milk in TBST.

Detection: ECL Kit.

Exposure time: 5s.