

Anti-PPM1E Rabbit mAb

Purified Recombinant Rabbit Monoclonal Antibody

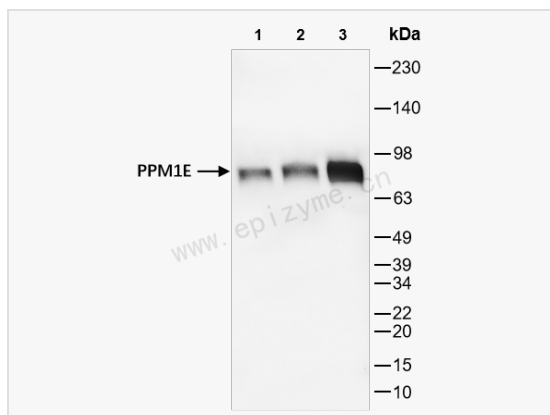
Catalog # R015620

Product Information

Application	WB, IHC-P/IF (Tissue-P), ELISA
Reactivity	Human
Dilution	WB 1:1,000~1:2,000; IHC-P 1:100~1:200; IF 1:100~1:200
Host	Rabbit
Clonality	Monoclonal
Clone No.	15N15F69
Isotype	IgG
Label	Unconjugated
Immunogen	A synthesized peptide derived from human PPM1E
Format	Affinity purified monoclonal antibody supplied in PBS with 0.01% sodium azide and 50% glycerol, pH 7.3.
Storage	Shipped on wet ice. Store at -20°C. Stable for 24 months from date of receipt. Aliquoting is unnecessary for -20°C storage.
Precautions	Anti-PPM1E Rabbit mAb [15N15F69] is for research use only and not for use in diagnostic or therapeutic procedures.

Protein Information

Synonyms	Ca(2+)/calmodulin-dependent protein kinase phosphatase N; CaMKN; CaMKP-N; CaMKP-nucleus; KIAA1072; Nuclear calmodulin dependent protein kinase phosphatase; Partner of PIX 1; Partner of PIX-alpha; Partner of PIXA; POPX1; PP2CH; Ppm1e; PPM1E_HUMAN; Protein phosphatase 1E; Protein phosphatase Mg ²⁺ /Mn ²⁺ dependent 1E.
Calculated MW	Calculated MW: 84 kDa; Observed MW: 84 kDa
Uniprot ID	Q8WY54
Gene ID	22843
Background	This gene encodes a member of the PPM family of serine/threonine-protein phosphatases. The encoded protein is localized to the nucleus and dephosphorylates and inactivates multiple substrates including serine/threonine-protein kinase PAK 1, 5'-AMP-activated protein kinase (AMPK) and the multifunctional calcium/calmodulin-dependent protein kinases. Alternatively spliced transcript variants have been observed for this gene. [provided by RefSeq, May 2012]
Cellular Location	Nucleus. Cytoplasm. A truncated form, major form, with the C-terminal part missing, is mostly found in the cytoplasm and a little in the nucleus. The full length, minor form, is found in the nucleus.



Western Blot - Anti-PPM1E Rabbit mAb [15N15F69]

All lanes: R015620 at 1:1,000 dilution

Lane 1: 293T (Human embryonic kidney cell) whole cell lysates

Lane 2: K562 (Human chronic myeloid leukemia cell) whole cell lysates

Lane 3: SH-SY5Y (Human neuroblastoma epithelial cell) whole cell lysates

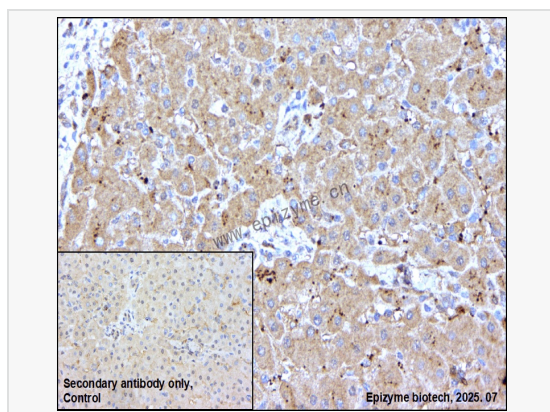
Lysates/proteins at 10 µg per lane.

Secondary antibody: Goat Anti-Rabbit IgG (H+L), HRP Conjugated (Cat. No. LF102) at 1:5,000 dilution

Predicted band size: 84 kDa

Observed band size: 84 kDa

Developed using the ECL technique (Cat. No. SQ201).



Immunohistochemistry - Anti-PPM1E Rabbit mAb [15N15F69]

Sample: Paraformaldehyde-fixed, paraffin embedded human hepatoma tissue

Heat mediated antigen retrieval with Tris-EDTA buffer (pH 9.0) for 30 mins.

Primary antibody: R015620 at 1:200 dilution

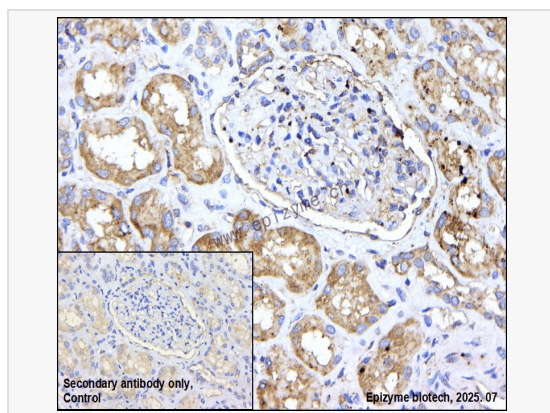
Secondary antibody: Goat Anti-Rabbit IgG (H+L), HRP conjugated at 1:1,000 dilution

DAB was used as the chromogen.

Counter stained with hematoxylin.

Positive/negative staining were presented.

Only the secondary antibody was used as the negative control.



Immunohistochemistry - Anti-PPM1E Rabbit mAb [15N15F69]

Sample: Paraformaldehyde-fixed, paraffin embedded human renal carcinoma tissue

Heat mediated antigen retrieval with Tris-EDTA buffer (pH 9.0) for 30 mins.

Primary antibody: R015620 at 1:200 dilution

Secondary antibody: Goat Anti-Rabbit IgG (H+L), HRP conjugated at 1:1,000 dilution

DAB was used as the chromogen.

Counter stained with hematoxylin.

Positive/negative staining were presented.

Only the secondary antibody was used as the negative control.