

Anti-DRP1 Rabbit mAb

Purified Recombinant Rabbit Monoclonal Antibody

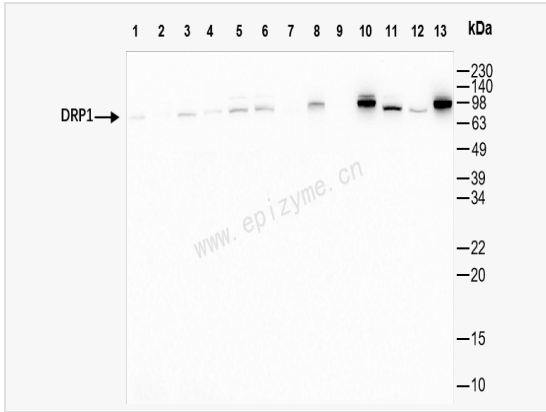
Catalog # R015603

Product Information

Application	WB, IHC-P/IF (Tissue-P), ELISA
Reactivity	Human, Mouse, Rat
Dilution	WB 1:1,000~1:2,000; IHC-P 1:100~1:200; IF 1:100~1:200
Host	Rabbit
Clonality	Monoclonal
Clone No.	36G02G45
Isotype	IgG
Label	Unconjugated
Immunogen	Recombinant protein of mouse DRP1
Format	Affinity purified monoclonal antibody supplied in PBS with 0.01% sodium azide and 50% glycerol, pH 7.3.
Storage	Shipped on wet ice. Store at -20°C. Stable for 24 months from date of receipt. Aliquoting is unnecessary for -20°C storage.
Precautions	Anti-DRP1 Rabbit mAb [36G02G45] is for research use only and not for use in diagnostic or therapeutic procedures.

Protein Information

Synonyms	DLP1; dnm1l; DNM1L_HUMAN; Dnm1p/Vps1p-like protein; dnm1l; DRP1; DVLP; Dymple; Dynamin 1 like; Dynamin family member proline-rich carboxyl-terminal domain less; Dynamin like protein; Dynamin related protein 1; Dynamin-1-like protein; Dynamin-like protein 4; Dynamin-like protein; Dynamin-like protein IV; Dynamin-related protein 1; DYNIV 11; EMPF; EMPF1; FLJ41912; HdynIV; VPS1.
Calculated MW	Calculated MW: 82 kDa; Observed MW: 82 kDa
Uniprot ID	Q8K1M6
Gene ID	74006
Background	This gene encodes a member of the dynamin family. The encoded protein is localized to the cytoplasm and mitochondrial membrane, is involved in mitochondrial and peroxisomal division, and is essential for mitochondrial fission. Alternative splicing results in multiple transcript variants. A related pseudogene has been identified on chromosome 2. [provided by RefSeq, Feb 2013]
Cellular Location	Cytoplasm > cytosol. Golgi apparatus. Endomembrane system. Mainly cytosolic. Translocated to the mitochondrial membrane through interaction with FIS1. Colocalized with MARCH5 at mitochondrial membrane. Localizes to mitochondria at sites of division. Associated with peroxisomal membranes, partly recruited there by PEX11B. May also be associated with endoplasmic reticulum tubules and cytoplasmic vesicles and found to be perinuclear. In some cell types, localizes to the Golgi complex.
Tissue Location	Ubiquitously expressed with highest levels found in skeletal muscles, heart, kidney and brain. Isoform 1 is brain-specific. Isoform 2 and isoform 3 are predominantly expressed in testis and skeletal muscles respectively. Isoform 4 is weakly expressed



Western Blot - Anti-DRP1 Rabbit mAb [36G02G45]

All lanes: R015603 at 1:1,000 dilution

Lane 1: HeLa (Human cervix adenocarcinoma epithelial cell) whole cell lysates

Lane 2: HepG2 (Human hepatocarcinoma epithelial cell) whole cell lysates

Lane 3: HCT116 (Human colorectal carcinoma epithelial cell) whole cell lysates

Lane 4: 293T (Human embryonic kidney cell) whole cell lysates

Lane 5: K562 (Human chronic myeloid leukemia cell) whole cell lysates

Lane 6: U87 (Human malignant glioblastoma epithelial cells) whole cell lysates

Lane 7: C2C12 (Mouse myoblasts epithelial cell) whole cell lysates

Lane 8: Mouse heart whole tissue lysates

Lane 9: Mouse liver whole tissue lysates

Lane 10: Mouse brain whole tissue lysates

Lane 11: PC-12 (Rat adrenal pheochromocytoma epithelial cell) whole cell lysates

Lane 12: Rat muscle whole tissue lysates

Lane 13: Rat brain whole tissue lysates

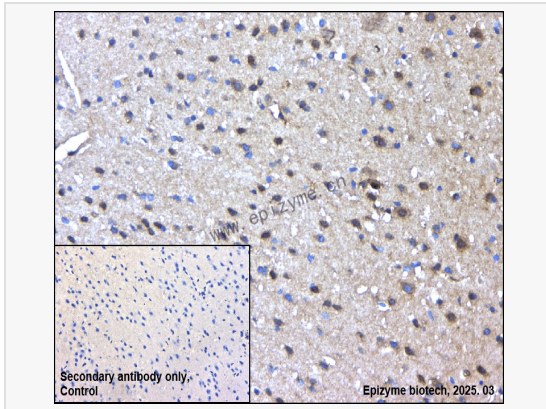
Lysates/proteins at 10 µg per lane.

Secondary antibody: Goat Anti-Rabbit IgG (H+L), HRP Conjugated (Cat. No. LF102) at 1:5,000 dilution

Predicted band size: 82 kDa

Observed band size: 82 kDa

Developed using the ECL technique (Cat. No. SQ201).



Immunohistochemistry - Anti-DRP1 Rabbit mAb [36G02G45]

Sample: Paraformaldehyde-fixed, paraffin embedded mouse brain tissue

Heat mediated antigen retrieval with Tris-EDTA buffer (pH 9.0) for 30 mins.

Primary antibody: R015603 at 1:200 dilution

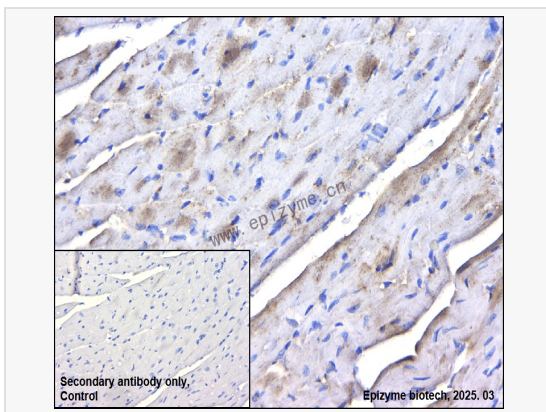
Secondary antibody: Goat Anti-Rabbit IgG (H+L), HRP conjugated at 1:1,000 dilution

DAB was used as the chromogen.

Counter stained with hematoxylin.

Positive/negative staining were presented.

Only the secondary antibody was used as the negative control.



Immunohistochemistry - Anti-DRP1 Rabbit mAb [36G02G45]

Sample: Paraformaldehyde-fixed, paraffin embedded mouse heart tissue

Heat mediated antigen retrieval with Tris-EDTA buffer (pH 9.0) for 30 mins.

Primary antibody: R015603 at 1:200 dilution

Secondary antibody: Goat Anti-Rabbit IgG (H+L), HRP conjugated at 1:1,000 dilution

DAB was used as the chromogen.

Counter stained with hematoxylin.

Positive/negative staining were presented.

Only the secondary antibody was used as the negative control.