

## Anti-nSMase Rabbit mAb

Purified Recombinant Rabbit Monoclonal Antibody

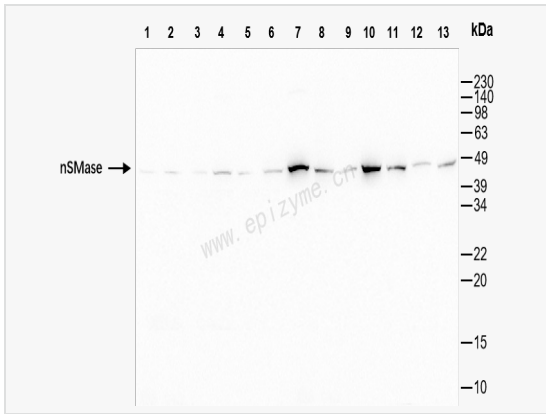
Catalog # R015592

### Product Information

Application	WB, IHC-P/IF (Tissue-P), IF (Cell)/ICC, ELISA
Reactivity	Human, Mouse, Rat
Dilution	WB 1:1,000~1:2,000; IHC-P 1:100~1:200; IF 1:100~1:200
Host	Rabbit
Clonality	Monoclonal
Clone No.	95N03Q17
Isotype	IgG
Label	Unconjugated
Immunogen	A synthesized peptide derived from human nSMase
Format	Affinity purified monoclonal antibody supplied in PBS with 0.01% sodium azide and 50% glycerol, pH 7.3.
Storage	Shipped on wet ice. Store at -20°C. Stable for 24 months from date of receipt. Aliquoting is unnecessary for -20°C storage.
Precautions	Anti-nSMase Rabbit mAb [95N03Q17] is for research use only and not for use in diagnostic or therapeutic procedures.

### Protein Information

Synonyms	ISC1; Lyso platelet activating factor phospholipase C; Lyso-PAF-PLC; Lyso-platelet-activating factor-phospholipase C; N-SMase; Neutral sphingomyelinase; NSMA_HUMAN; nSMase; NSMASE1; Smpd2; Sphingomyelin phosphodiesterase 2; Sphingomyelin phosphodiesterase 2, neutral membrane (neutral sphingomyelinase).
Calculated MW	Calculated MW: 48 kDa; Observed MW: 48 kDa
Uniprot ID	O60906
Gene ID	6610
Background	This gene encodes a protein which was initially identified as a sphingomyelinase based on sequence similarity between bacterial sphingomyelinases and a yeast protein. Subsequent studies showed that its biological function is less likely to be as a sphingomyelinase and instead as a lysophospholipase. [provided by RefSeq, Oct 2009]
Cellular Location	Membrane.



Western Blot - Anti-nSMase Rabbit mAb [95N03Q17]

All lanes: R015592 at 1:1,000 dilution

Lane 1: HeLa (Human cervix adenocarcinoma epithelial cell) whole cell lysates

Lane 2: HepG2 (Human hepatocarcinoma epithelial cell) whole cell lysates

Lane 3: HCT116 (Human colorectal carcinoma epithelial cell) whole cell lysates

Lane 4: 293T (Human embryonic kidney cell) whole cell lysates

Lane 5: K562 (Human chronic myeloid leukemia cell) whole cell lysates

Lane 6: U87 (Human malignant glioblastoma epithelial cells) whole cell lysates

Lane 7: Raw264.7 (Mouse mononuclear macrophage leukemia cell) whole cell lysates

Lane 8: Mouse heart whole tissue lysates

Lane 9: Mouse liver whole tissue lysates

Lane 10: Mouse brain whole tissue lysates

Lane 11: PC-12 (Rat adrenal pheochromocytoma epithelial cell) whole cell lysates

Lane 12: Rat muscle whole tissue lysates

Lane 13: Rat brain whole tissue lysates

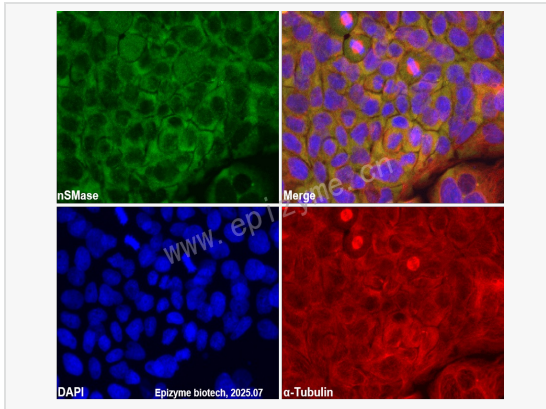
Lysates/proteins at 10 µg per lane.

Secondary antibody: Goat Anti-Rabbit IgG (H+L), HRP Conjugated (Cat. No. LF102) at 1:5,000 dilution

Predicted band size: 48 kDa

Observed band size: 48 kDa

Developed using the ECL technique (Cat. No. SQ201).



Immunofluorescence - Anti-nSMase Rabbit mAb [95N03Q17]

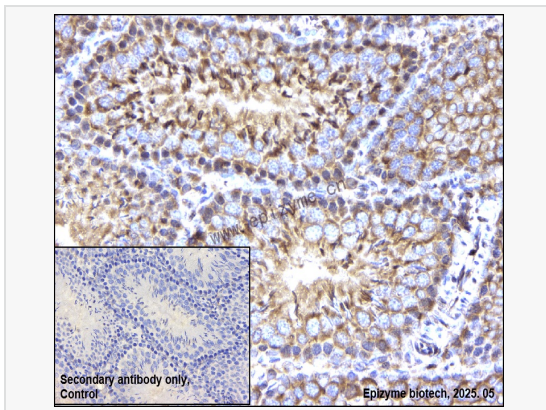
Sample: A431 cells

The cells were fixed with 4% paraformaldehyde (10 min), permeabilized with 0.5% Triton X-100 for 10 minutes and then blocked with 5% BSA in 0.1% PBS-Tween for 0.5 hours.

Primary antibodies: R015592 at 1:100 dilution and  $\alpha$ -tubulin Mouse Monoclonal Antibody (Cat. No. LF209) at 1:100 dilution

Secondary antibodies: Goat anti-Rabbit (488) at 1:1,000 dilution (shown in green) and Goat anti-Mouse (555) at 1:1,000 dilution (shown in red)

Nuclei were stained with DAPI (shown in blue).



Immunohistochemistry - Anti-nSMase Rabbit mAb [95N03Q17]

Sample: Paraformaldehyde-fixed, paraffin embedded rat testis tissue

Heat mediated antigen retrieval with Tris-EDTA buffer (pH 9.0) for 30 mins.

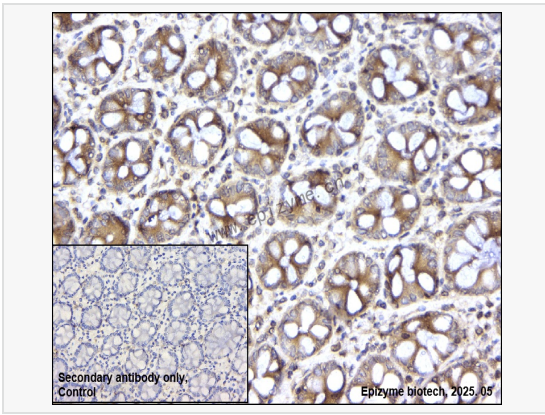
Primary antibody: R015592 at 1:200 dilution

Secondary antibody: Goat Anti-Rabbit IgG (H+L), HRP conjugated at 1:1,000 dilution DAB was used as the chromogen.

Counter stained with hematoxylin.

Positive/negative staining were presented.

Only the secondary antibody was used as the negative control.



**Immunohistochemistry - Anti-nSMase Rabbit mAb [95N03Q17]**

Sample: Paraformaldehyde-fixed, paraffin embedded human colonic cancer tissue

Heat mediated antigen retrieval with Tris-EDTA buffer (pH 9.0) for 30 mins.

Primary antibody: R015592 at 1:200 dilution

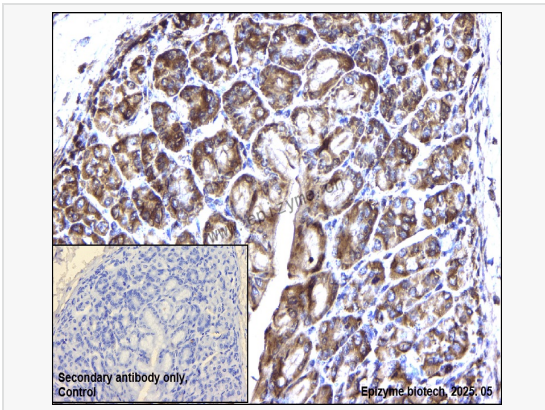
Secondary antibody: Goat Anti-Rabbit IgG (H+L), HRP conjugated at 1:1,000 dilution

DAB was used as the chromogen.

Counter stained with hematoxylin.

Positive/negative staining were presented.

Only the secondary antibody was used as the negative control.



**Immunohistochemistry - Anti-nSMase Rabbit mAb [95N03Q17]**

Sample: Paraformaldehyde-fixed, paraffin embedded mouse stomach tissue

Heat mediated antigen retrieval with Tris-EDTA buffer (pH 9.0) for 30 mins.

Primary antibody: R015592 at 1:200 dilution

Secondary antibody: Goat Anti-Rabbit IgG (H+L), HRP conjugated at 1:1,000 dilution

DAB was used as the chromogen.

Counter stained with hematoxylin.

Positive/negative staining were presented.

Only the secondary antibody was used as the negative control.