

Anti-TIRAP Rabbit mAb

Purified Recombinant Rabbit Monoclonal Antibody

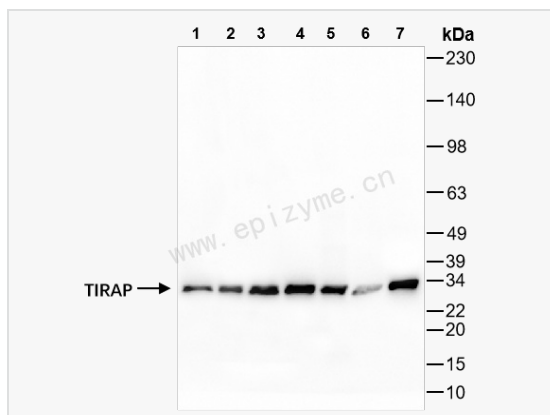
Catalog # R015566

Product Information

Application	WB, ELISA
Reactivity	Mouse, Rat
Dilution	WB 1:1,000~1:2,000
Host	Rabbit
Clonality	Monoclonal
Clone No.	18H54S21
Isotype	IgG
Label	Unconjugated
Immunogen	A synthesized peptide derived from human TIRAP
Format	Affinity purified monoclonal antibody supplied in PBS with 0.01% sodium azide and 50% glycerol, pH 7.3.
Storage	Shipped on wet ice. Store at -20°C. Stable for 24 months from date of receipt. Aliquoting is unnecessary for -20°C storage.
Precautions	Anti-TIRAP Rabbit mAb [18H54S21] is for research use only and not for use in diagnostic or therapeutic procedures.

Protein Information

Synonyms	Adapter protein wyatt; FLJ42305; MAL; MyD88 adapter like protein; TIR domain containing adapter protein; Toll interleukin 1 receptor (TIR) domain containing adaptor protein; Toll interleukin 1 receptor domain containing adapter protein; Toll like receptor adaptor protein; Wyatt.
Calculated MW	Calculated MW: 24 kDa; Observed MW: 28 kDa
Uniprot ID	P58753
Gene ID	114609
Background	The innate immune system recognizes microbial pathogens through Toll-like receptors (TLRs), which identify pathogen-associated molecular patterns. Different TLRs recognize different pathogen-associated molecular patterns and all TLRs have a Toll-interleukin 1 receptor (TIR) domain, which is responsible for signal transduction. The protein encoded by this gene is a TIR adaptor protein involved in the TLR4 signaling pathway of the immune system. It activates NF-kappa-B, MAPK1, MAPK3 and JNK, which then results in cytokine secretion and the inflammatory response. Alternative splicing of this gene results in several transcript variants; however, not all variants have been fully described. [provided by RefSeq, Jul 2008].
Cellular Location	Cytoplasmic



Western Blot - Anti-TIRAP Rabbit mAb [18H54S21]

All lanes: R015566 at 1:1,000 dilution

Lane 1: Raw264.7 (Mouse mononuclear macrophage leukemia cell) whole cell lysates

Lane 2: Mouse spleen whole tissue lysates

Lane 3: Mouse embryo-like whole tissue lysates

Lane 4: PC-12 (Rat adrenal pheochromocytoma epithelial cell) whole cell lysates

Lane 5: Rat spleen whole tissue lysates

Lane 6: Rat lymphoid whole tissue lysates

Lane 7: Rat testicular whole tissue lysates

Lysates/proteins at 10 µg per lane.

Secondary antibody: Goat Anti-Rabbit IgG (H+L), HRP Conjugated (Cat. No. LF102) at 1:5,000 dilution

Predicted band size: 24 kDa

Observed band size: 28 kDa

Developed using the ECL technique (Cat. No. SQ201).