

Anti-KIF4A Rabbit mAb

Purified Recombinant Rabbit Monoclonal Antibody

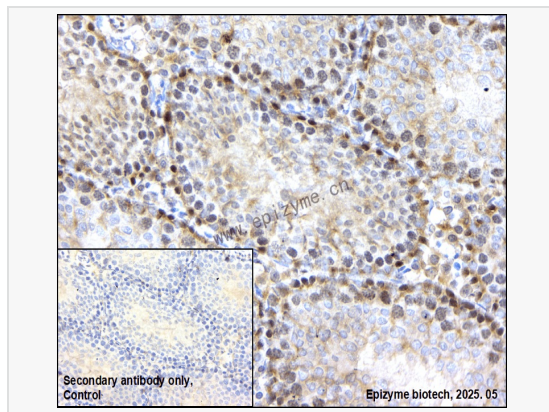
Catalog # R015546

Product Information

Application	WB, IHC-P/IF (Tissue-P), ELISA
Reactivity	Human, Mouse, Rat
Dilution	WB 1:1,000~1:2,000; IHC-P 1:100~1:200; IF 1:100~1:200
Host	Rabbit
Clonality	Monoclonal
Clone No.	48S81G12
Isotype	IgG
Label	Unconjugated
Immunogen	A synthesized peptide derived from human KIF4A
Format	Affinity purified monoclonal antibody supplied in PBS with 0.01% sodium azide and 50% glycerol, pH 7.3.
Storage	Shipped on wet ice. Store at -20°C. Stable for 24 months from date of receipt. Aliquoting is unnecessary for -20°C storage.
Precautions	Anti-KIF4A Rabbit mAb [48S81G12] is for research use only and not for use in diagnostic or therapeutic procedures.

Protein Information

Synonyms	Chromokinesin; Chromokinesin-A; Chromosome associated kinesin KIF4A; Chromosome-associated kinesin KIF4A; FLJ12530; FLJ12655; FLJ14204; FLJ20631; HSA271784; KIF4; KIF4 G1; KIF4A; KIF4A_HUMAN; KIF4G1; Kinesin family member 4A.
Calculated MW	Calculated MW: 140 kDa; Observed MW: 150 kDa
Uniprot ID	O95239
Gene ID	24137
Background	This gene encodes a member of the kinesin 4 subfamily of kinesin related proteins. The encoded protein is an ATP dependent microtubule-based motor protein that is involved in the intracellular transport of membranous organelles. This protein also associates with condensed chromosome arms and may be involved in maintaining chromosome integrity during mitosis. This protein may also be involved in the organization of the central spindle prior to cytokinesis. A pseudogene of this gene is found on chromosome X.[provided by RefSeq, Mar 2010].
Cellular Location	Nucleus matrix. Cytoplasm > cytoskeleton > spindle. Midbody. Chromosome. Not present in the nucleolus. In early mitosis, associated with the mitotic spindle, in anaphase, localized to the spindle midzone and, in telophase and cytokinesis, to the midbody. In late cytokinesis, found in the center of the midbody. Associated with chromosomes at all stages of mitosis.
Tissue Location	Highly expressed in hematopoietic tissues, fetal liver, spleen, thymus and adult thymus and bone marrow. Lower levels are found in heart, testis, kidney, colon and lung.



Immunohistochemistry - Anti-KIF4A Rabbit mAb [48S81G12]

Sample: Paraformaldehyde-fixed, paraffin embedded rat testis tissue

Heat mediated antigen retrieval with Tris-EDTA buffer (pH 9.0) for 30 mins.

Primary antibody: R015546 at 1:200 dilution

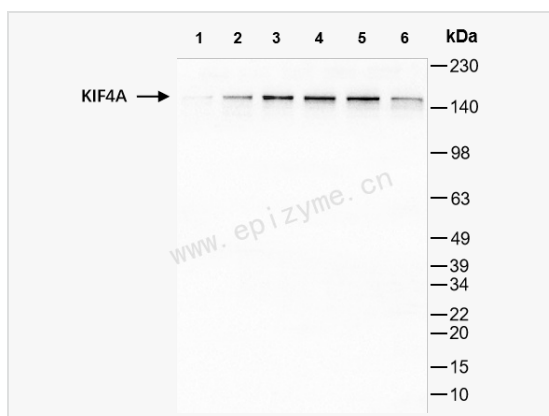
Secondary antibody: Goat Anti-Rabbit IgG (H+L), HRP conjugated at 1:1,000 dilution

DAB was used as the chromogen.

Counter stained with hematoxylin.

Positive/negative staining were presented.

Only the secondary antibody was used as the negative control.



Western Blot - Anti-KIF4A Rabbit mAb [48S81G12]

All lanes: R015546 at 1:1,000 dilution

Lane 1: HeLa (Human cervix adenocarcinoma epithelial cell) whole cell lysates

Lane 2: HepG2 (Human hepatocarcinoma epithelial cell) whole cell lysates

Lane 3: HCT116 (Human colorectal carcinoma epithelial cell) whole cell lysates

Lane 4: K562 (Human chronic myeloid leukemia cell) whole cell lysates

Lane 5: PC-12 (Rat adrenal pheochromocytoma epithelial cell) whole cell lysates

Lane 6: C2C12 (Mouse myoblasts epithelial cell) whole cell lysates

Lysates/proteins at 10 µg per lane.

Secondary antibody: Goat Anti-Rabbit IgG (H+L), HRP Conjugated (Cat. No. LF102) at 1:5,000 dilution

Predicted band size: 140 kDa

Observed band size: 150 kDa

Developed using the ECL technique (Cat. No. SQ201).