

## Anti-EBI3 Rabbit mAb

Purified Recombinant Rabbit Monoclonal Antibody

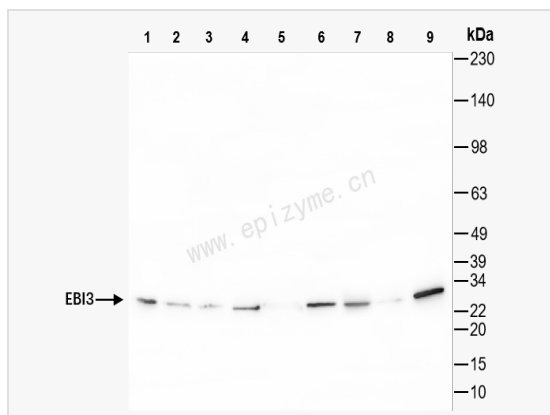
Catalog # R015539

### Product Information

Application	WB, ELISA
Reactivity	Human, Mouse, Rat
Dilution	WB 1:1,000~1:2,000
Host	Rabbit
Clonality	Monoclonal
Clone No.	20K02F83
Isotype	IgG
Label	Unconjugated
Immunogen	A synthesized peptide derived from human EBI3
Format	Affinity purified monoclonal antibody supplied in PBS with 0.01% sodium azide and 50% glycerol, pH 7.3.
Storage	Shipped on wet ice. Store at -20°C. Stable for 24 months from date of receipt. Aliquoting is unnecessary for -20°C storage.
Precautions	Anti-EBI3 Rabbit mAb [20K02F83] is for research use only and not for use in diagnostic or therapeutic procedures.

### Protein Information

Synonyms	cytokine receptor; EBI3; EBV induced gene 3 protein; EBV-induced gene 3 protein; Epstein Barr virus induced 3; Epstein Barr virus induced gene 3; Epstein Barr virus induced gene 3 protein; Epstein-Barr virus-induced gene 3 protein; IL 27 subunit beta; IL 27B; IL-27 subunit beta; IL-27B; IL27 subunit; IL27 subunit beta; IL27B; IL27B_HUMAN; IL35 subunit; interleukin 27 subunit beta; Interleukin-27 subunit beta.
Calculated MW	Calculated MW: 25 kDa; Observed MW: 25 kDa
Uniprot ID	Q14213
Gene ID	10148
Background	This gene was identified by its induced expression in B lymphocytes in response Epstein-Barr virus infection. It encodes a secreted glycoprotein belonging to the hematopoietin receptor family, and heterodimerizes with a 28 kDa protein to form interleukin 27 (IL-27). IL-27 regulates T cell and inflammatory responses, in part by activating the Jak/STAT pathway of CD4+ T cells. [provided by RefSeq, Sep 2008]
Cellular Location	Secreted.



Western Blot - Anti-EBI3 Rabbit mAb [20K02F83]

All lanes: R015539 at 1:1,000 dilution

Lane 1: Ball1 (Human B lymphocyte acute leukemia cell) whole cell lysates

Lane 2: K562 (Human chronic myeloid leukemia cell) whole cell lysates

Lane 3: U87 (Human malignant glioblastoma epithelial cell) whole cell lysates

Lane 4: Raw264.7 (Mouse mononuclear macrophage leukemia cell) whole cell lysates

Lane 5: Mouse spleen whole tissue lysates

Lane 6: PC-12 (Rat adrenal pheochromocytoma epithelial cell) whole cell lysates

Lane 7: Rat spleen whole tissue lysates

Lane 8: Rat lymphoid whole tissue lysates

Lane 9: Rat testicular whole tissue lysates

Lysates/proteins at 10 µg per lane.

Secondary antibody: Goat Anti-Rabbit IgG (H+L), HRP Conjugated (Cat. No. LF102) at 1:5,000 dilution

Predicted band size: 25 kDa

Observed band size: 25 kDa

Developed using the ECL technique (Cat. No. SQ201).