

FITC Mouse Anti-Human CD45

Purified FITC-conjugated Recombinant Mouse Monoclonal Antibody

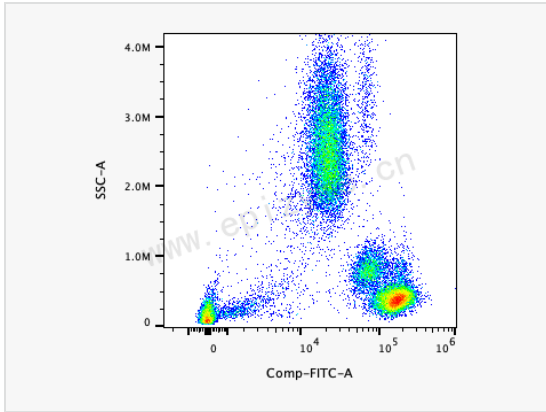
Catalog # F100905

Product Information

Application	FC
Recommended Usage	5 μ L per million cells in 100 μ L staining volume or 5 μ L per 100 μ L of whole blood.
Reactivity	Human
Host	Mouse
Clonality	Monoclonal
Clone No.	83J75S36
Isotype	IgG1, κ
Label	FITC (Ex/Em: 491/516 nm)
Immunogen	Recombinant protein of human CD45
Format	Phosphate-buffered solution, pH 7.2, containing 0.09% sodium azide and 0.2% (w/v) BSA.
Storage	Shipped on wet ice. Store undiluted between 2°C and 8°C and protected from prolonged exposure to light. Do not freeze.
Precautions	FITC Mouse Anti-Human CD45 [83J75S36] is for research use only and not for use in diagnostic or therapeutic procedures.

Protein Information

Synonyms	B220; CD 45; CD45 antigen; GP180; L-CA; LCA; Leukocyte common antigen; loc; Ly-5; LY5; Ly5, homolog of; Lyt-4; OTTHUMP00000033813; OTTHUMP00000033816; OTTHUMP00000033817; OTTHUMP000000338574; Protein tyrosine phosphatase receptor type c polypeptide; Protein tyrosine phosphatase, receptor type C; protein tyrosine phosphatase, receptor type, C; Protein tyrosine phosphatase, receptor type, c polypeptide; Ptprc; PTPRC_HUMAN; Receptor-type tyrosine-protein phosphatase C; T200; T200 glycoprotein; T200 leukocyte common antigen.
Uniprot ID	P08575
Gene ID	5788
Background	CD45 is a 180-240 kD single chain type I membrane glycoprotein also known as leukocyte common antigen (LCA) and T200. It is a tyrosine phosphatase expressed on the plasma membrane of all hematopoietic cells, except erythrocytes and platelets. CD45 is a signaling molecule that regulates a variety of cellular processes including cell growth, differentiation, cell cycle, and oncogenic transformation. CD45 plays a critical role in T and B cell antigen receptor-mediated activation by dephosphorylating substrates including p56Lck, p59Fyn, and other Src family kinases. CD45 non-covalently associates with lymphocyte phosphatase-associated phosphoprotein (LPAP) on T and B lymphocytes. CD45 has been reported to bind galectin-1 and to be associated with several other cell surface antigens including CD1, CD2, CD3, and CD4.
Cellular Location	Membrane. Membrane raft. Colocalized with DPP4 in membrane rafts.



Human peripheral blood leucocytes were stained with FITC Mouse Anti-Human CD45 [83J75S36].