

Anti-PKC beta 1 Rabbit mAb

Purified Recombinant Rabbit Monoclonal Antibody

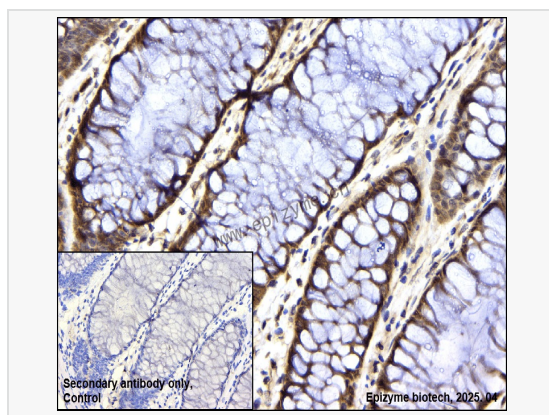
Catalog # R015366

Product Information

Application	WB, IHC-P/IF (Tissue-P), IF (Cell)/ICC, ELISA
Reactivity	Human, Mouse, Rat
Dilution	WB 1:1,000~1:2,000; IHC-P 1:100~1:200; IF 1:100~1:200
Host	Rabbit
Clonality	Monoclonal
Clone No.	52R71Y63
Isotype	IgG
Label	Unconjugated
Immunogen	A synthesized peptide derived from human PKC beta 1
Format	Affinity purified monoclonal antibody supplied in PBS with 0.01% sodium azide and 50% glycerol, pH 7.3.
Storage	Shipped on wet ice. Store at -20°C. Stable for 24 months from date of receipt. Aliquoting is unnecessary for -20°C storage.
Precautions	Anti-PKC beta 1 Rabbit mAb [52R71Y63] is for research use only and not for use in diagnostic or therapeutic procedures.

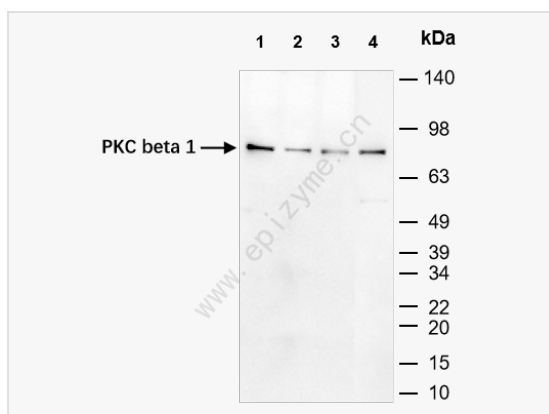
Protein Information

Synonyms	KPCB_HUMAN; PKC beta; PKC-B; PKC-beta; PKCB; Prkcb; PRKCB I; PRKCB1; PRKCB2; Protein kinase C beta; Protein kinase C beta type; protein kinase C, beta 1 polypeptide; protein kinase C, beta-1; PKC beta 1 beta.
Calculated MW	Calculated MW: 77 kDa; Observed MW: 77 kDa
Uniprot ID	P05771
Gene ID	5579
Background	Protein kinase C (PKC) is a family of serine- and threonine-specific protein kinases that can be activated by calcium and second messenger diacylglycerol. PKC family members phosphorylate a wide variety of protein targets and are known to be involved in diverse cellular signaling pathways. PKC family members also serve as major receptors for phorbol esters, a class of tumor promoters. Each member of the PKC family has a specific expression profile and is believed to play a distinct role in cells. The protein encoded by this gene is one of the PKC family members. This protein kinase has been reported to be involved in many different cellular functions, such as B cell activation, apoptosis induction, endothelial cell proliferation, and intestinal sugar absorption. Studies in mice also suggest that this kinase may also regulate neuronal functions and correlate fear-induced conflict behavior after stress. Alternatively spliced transcript variants encoding distinct isoforms have been reported. [provided by RefSeq, Jul 2008]
Cellular Location	Cytoplasm. Nucleus. Membrane.



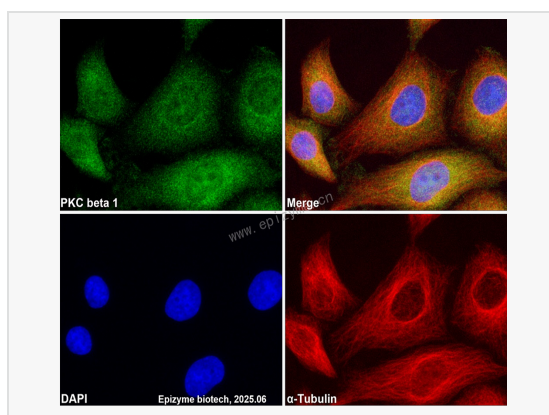
Immunohistochemistry - Anti-PKC beta 1 Rabbit mAb [52R71Y63]

Sample: Paraformaldehyde-fixed, paraffin embedded human colonic cancer tissue
 Heat mediated antigen retrieval with Tris-EDTA buffer (pH 9.0) for 30 mins.
 Primary antibody: R015366 at 1:200 dilution
 Secondary antibody: Goat Anti-Rabbit IgG (H+L), HRP conjugated at 1:1,001 dilution
 DAB was used as the chromogen.
 Counter stained with hematoxylin.
 Positive/negative staining were presented.
 Only the secondary antibody was used as the negative control.



Western Blot - Anti-PKC beta 1 Rabbit mAb [52R71Y63]

All lanes: R015366 at 1:1,000 dilution
 Lane 1: HeLa (Human cervix adenocarcinoma epithelial cell) whole cell lysates
 Lane 2: Huh1 (Human hepatocarcinoma epithelial cell) whole cell lysates
 Lane 3: Raw264.7 (Mouse mononuclear macrophage leukemia cell) whole cell lysates
 Lane 4: PC-12 (Rat adrenal pheochromocytoma epithelial cell) whole cell lysates
 Lysates/proteins at 10 µg per lane.
 Secondary antibody: Goat Anti-Rabbit IgG (H+L), HRP Conjugated (Cat. No. LF102) at 1:5,000 dilution
 Predicted band size: 77 kDa
 Observed band size: 77 kDa
 Developed using the ECL technique (Cat. No. SQ201).



Immunofluorescence - Anti-PKC beta 1 Rabbit mAb [52R71Y63]

Sample: HeLa cells
 The cells were fixed with 4% paraformaldehyde (10 min), permeabilized with 0.5% Triton X-100 for 10 minutes and then blocked with 5% BSA in 0.1% PBS-Tween for 0.5 hours.
 Primary antibodies: R015366 at 1:100 dilution and α -tubulin Mouse Monoclonal Antibody (Cat. No. LF209) at 1:100 dilution
 Secondary antibodies: Goat anti-Rabbit (488) at 1:1,000 dilution (shown in green) and Goat anti-Mouse (555) at 1:1,000 dilution (shown in red)
 Nuclei were stained with DAPI (shown in blue).