

Anti-TFII I Rabbit mAb

Purified Recombinant Rabbit Monoclonal Antibody

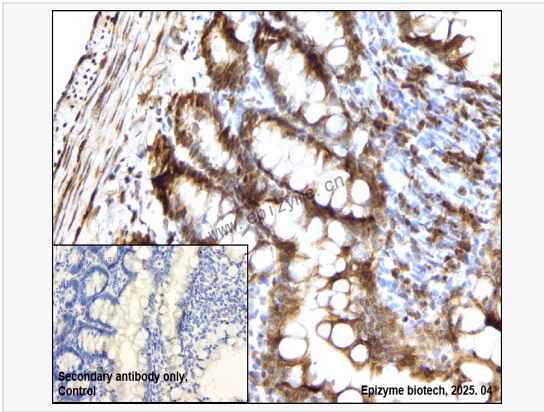
Catalog # R015333

Product Information

Application	WB, IHC-P/IF (Tissue-P), IF (Cell)/ICC, ELISA
Reactivity	Human, Mouse, Rat
Dilution	WB 1:1,000~1:2,000; IHC-P 1:100~1:200; IF 1:100~1:200
Host	Rabbit
Clonality	Monoclonal
Clone No.	75I86A99
Isotype	IgG
Label	Unconjugated
Immunogen	A synthesized peptide derived from GTF2I
Format	Affinity purified monoclonal antibody supplied in PBS with 0.01% sodium azide and 50% glycerol, pH 7.3.
Storage	Shipped on wet ice. Store at -20°C. Stable for 24 months from date of receipt. Aliquoting is unnecessary for -20°C storage.
Precautions	Anti-TFII I Rabbit mAb [75I86A99] is for research use only and not for use in diagnostic or therapeutic procedures.

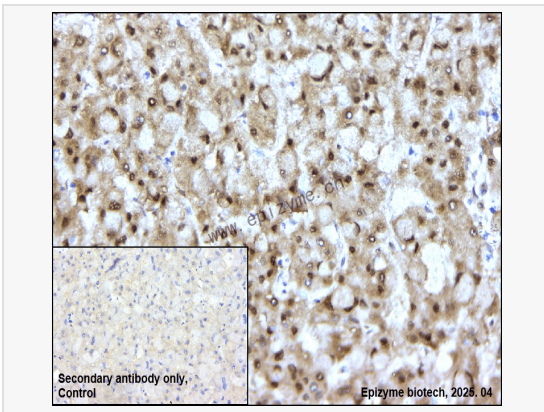
Protein Information

Synonyms	BAP 135; BAP-135; BAP135; Bruton tyrosine kinase associated protein 135; Bruton tyrosine kinase-associated protein 135; BTK associated protein 135; BTK associated protein 135kDa; BTK associated protein; BTK-associated protein 135; BTKAP 1; BTKAP1; DIWS; FLJ38776; FLJ56355; General transcription factor II i; General transcription factor II-I; General transcription factor IIi; GTF 2I; Gtf2i; GTF2I_HUMAN; GTFII I; GTFII-I; IB 291; IB291; SPIN; SRF Phox 1 interacting protein; SRF Phox1 interacting protein; SRF-Phox1-interacting protein; TFII-I; Transcription factor II I; WBS; WBSCR 6; WBSCR6; Williams Beuren syndrome chromosome region 6; Williams Beuren syndrome chromosome region 6 protein; Williams-Beuren syndrome chromosomal region 6 protein; TFII I.
Calculated MW	Calculated MW: 112 kDa; Observed MW: 135 kDa
Uniprot ID	P78347
Gene ID	2969
Background	This gene encodes a phosphoprotein containing six characteristic repeat motifs. The encoded protein binds to the initiator element (Inr) and E-box element in promoters and functions as a regulator of transcription. This locus, along with several other neighboring genes, is deleted in Williams-Beuren syndrome. There are many closely related genes and pseudogenes for this gene on chromosome 7. This gene also has pseudogenes on chromosomes 9, 13, and 21. Alternatively spliced transcript variants encoding multiple isoforms have been observed. [provided by RefSeq, Jul 2013]
Cellular Location	Cytoplasm, Nucleus. Colocalizes with BTK in the cytoplasm.
Tissue Location	Ubiquitous. Isoform 1 is strongly expressed in fetal brain, weakly in adult brain, muscle, and lymphoblasts and is almost



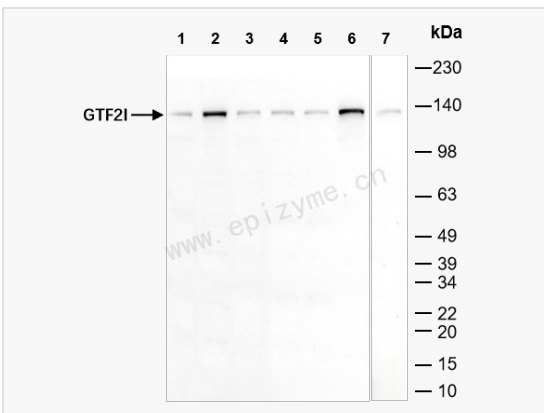
Immunohistochemistry - Anti-TFII I Rabbit mAb [75186A99]

Sample: Paraformaldehyde-fixed, paraffin embedded rat colon tissue
 Heat mediated antigen retrieval with Tris-EDTA buffer (pH 9.0) for 30 mins.
 Primary antibody: R015333 at 1:200 dilution
 Secondary antibody: Goat Anti-Rabbit IgG (H+L), HRP conjugated at 1:1,000 dilution
 DAB was used as the chromogen.
 Counter stained with hematoxylin.
 Positive/negative staining were presented.
 Only the secondary antibody was used as the negative control.



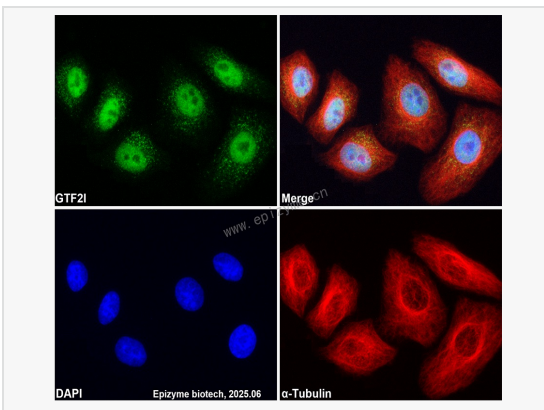
Immunohistochemistry - Anti-TFII I Rabbit mAb [75186A99]

Sample: Paraformaldehyde-fixed, paraffin embedded human hepatoma tissue
 Heat mediated antigen retrieval with Tris-EDTA buffer (pH 9.0) for 30 mins.
 Primary antibody: R015333 at 1:200 dilution
 Secondary antibody: Goat Anti-Rabbit IgG (H+L), HRP conjugated at 1:1,000 dilution
 DAB was used as the chromogen.
 Counter stained with hematoxylin.
 Positive/negative staining were presented.
 Only the secondary antibody was used as the negative control.



Western Blot - Anti-TFII I Rabbit mAb [75186A99]

All lanes: R015333 at 1:1,000 dilution
 Lane 1: HeLa (Human cervix adenocarcinoma epithelial cell) whole cell lysates
 Lane 2: Huh1 (Human hepatocarcinoma epithelial cell) whole cell lysates
 Lane 3: HepG2 (Human hepatocarcinoma epithelial cell) whole cell lysates
 Lane 4: T24 (Human bladder cancer epithelial cell) whole cell lysates
 Lane 5: U87 (Human malignant glioblastoma epithelial cells) whole cell lysates
 Lane 6: Raw264.7 (Mouse mononuclear macrophage leukemia cell) whole cell lysates
 Lane 7: PC-12 (Rat adrenal pheochromocytoma epithelial cell) whole cell lysates
 Lysates/proteins at 10 µg per lane.
 Secondary antibody: Goat Anti-Rabbit IgG (H+L), HRP Conjugated (Cat. No. LF102) at 1:5,000 dilution
 Predicted band size: 112 kDa
 Observed band size: 135 kDa
 Developed using the ECL technique (Cat. No. SQ201).



Immunofluorescence - Anti-TFII I Rabbit mAb [75186A99]

Sample: HeLa cells
 The cells were fixed with 4% paraformaldehyde (10 min), permeabilized with 0.5% Triton X-100 for 10 minutes and then blocked with 5% BSA in 0.1% PBS-Tween for 0.5 hours.
 Primary antibodies: R015333 at 1:100 dilution and α-tubulin Mouse Monoclonal Antibody (Cat. No. LF209) at 1:100 dilution
 Secondary antibodies: Goat anti-Rabbit (488) at 1:1,000 dilution (shown in green) and Goat anti-Mouse (555) at 1:1,000 dilution (shown in red)
 Nuclei were stained with DAPI (shown in blue).