

Anti-LysRS Rabbit mAb

Purified Recombinant Rabbit Monoclonal Antibody

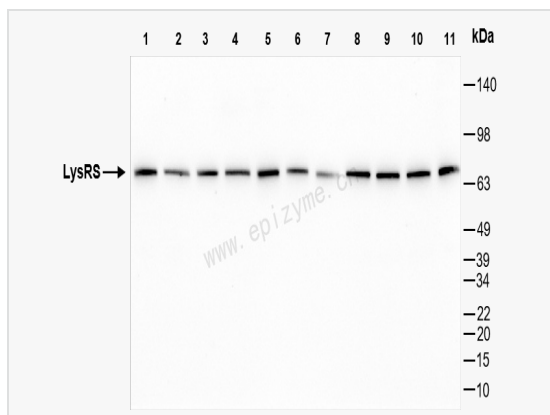
Catalog # R015281

Product Information

Application	WB, IHC-P/IF (Tissue-P), ELISA
Reactivity	Human, Mouse, Rat
Dilution	WB 1:1,000~1:2,000; IHC-P 1:100~1:200; IF 1:100~1:200
Host	Rabbit
Clonality	Monoclonal
Clone No.	94X32Q05
Isotype	IgG
Label	Unconjugated
Immunogen	A synthesized peptide derived from human LysRS
Format	Affinity purified monoclonal antibody supplied in PBS with 0.01% sodium azide and 50% glycerol, pH 7.3.
Storage	Shipped on wet ice. Store at -20°C. Stable for 24 months from date of receipt. Aliquoting is unnecessary for -20°C storage.
Precautions	Anti-LysRS Rabbit mAb [94X32Q05] is for research use only and not for use in diagnostic or therapeutic procedures.

Protein Information

Synonyms	CMTRIB; DFNB89; EC 6 1 1 6; KARS 1; KARS 2; KARS; KARS1; KARS2; KIAA0070; KRS; Lysine tRNA ligase; Lysine tRNA ligase; LysRS; Lysyl tRNA synthetase; Lysyl tRNA synthetase; SYK HUMAN.
Calculated MW	Calculated MW: 68 kDa; Observed MW: 68 kDa
Uniprot ID	Q15046
Gene ID	3735
Background	Aminoacyl-tRNA synthetases are a class of enzymes that charge tRNAs with their cognate amino acids. Lysyl-tRNA synthetase is a homodimer localized to the cytoplasm which belongs to the class II family of tRNA synthetases. It has been shown to be a target of autoantibodies in the human autoimmune diseases, polymyositis or dermatomyositis. Alternatively spliced transcript variants encoding different isoforms have been found for this gene. [provided by RefSeq, Jul 2008].
Cellular Location	Mitochondrion and Cytoplasm. Nucleus. Cell membrane. Secreted. Secretion is induced by TNF-alpha.



Western Blot - Anti-LysRS Rabbit mAb [94X32Q05]

All lanes: R015281 at 1:1,000 dilution

Lane 1: A549 (Human lung carcinoma epithelial cell) whole cell lysates

Lane 2: HepG2 (Human hepatocarcinoma epithelial cell) whole cell lysates

Lane 3: HCT116 (Human colorectal carcinoma epithelial cell) whole cell lysates

Lane 4: A431 (Human epidermoid teratoma cell line) whole cell lysates

Lane 5: Caco2 (Human colorectal adenocarcinoma epithelial cell) whole cell lysates

Lane 6: Jurkat (Human T lymphocytic leukemia cell) whole cell lysates

Lane 7: 293T (Human embryonic kidney cell) whole cell lysates

Lane 8: SCC-9 (Human tongue squamous carcinoma epithelial cell) whole cell lysates

Lane 9: C2C12 (Mouse myoblasts epithelial cell) whole cell lysates

Lane 10: Raw264.7 (Mouse mononuclear macrophage leukemia cell) whole cell lysates

Lane 11: Rat liver whole tissue lysates

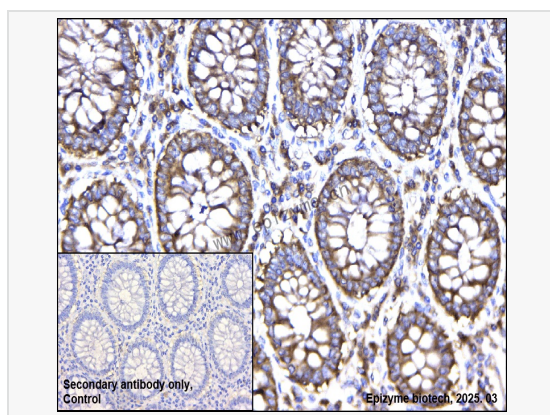
Lysates/proteins at 10 µg per lane.

Secondary antibody: Goat Anti-Rabbit IgG (H+L), HRP Conjugated (Cat. No. LF102) at 1:5,000 dilution

Predicted band size: 68 kDa

Observed band size: 68 kDa

Developed using the ECL technique (Cat. No. SQ201).



Immunohistochemistry - Anti-LysRS Rabbit mAb [94X32Q05]

Sample: Paraformaldehyde-fixed, paraffin embedded human colonic cancer tissue

Heat mediated antigen retrieval with Tris-EDTA buffer (pH 9.0) for 30 mins.

Primary antibody: R015281 at 1:200 dilution

Secondary antibody: Goat Anti-Rabbit IgG (H+L), HRP conjugated at 1:1,000 dilution

DAB was used as the chromogen.

Counter stained with hematoxylin.

Positive/negative staining were presented.

Only the secondary antibody was used as the negative control.