

Anti-PICALM Rabbit mAb

Purified Recombinant Rabbit Monoclonal Antibody

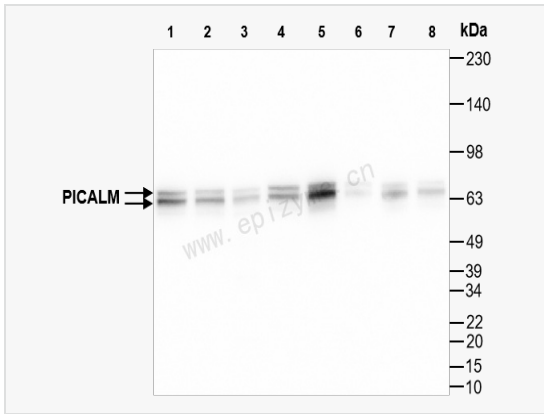
Catalog # R015257

Product Information

Application	WB, IF (Cell)/ICC, ELISA
Reactivity	Human, Mouse, Rat
Dilution	WB 1:1,000~1:2,000; IF 1:100~1:200
Host	Rabbit
Clonality	Monoclonal
Clone No.	23R67F04
Isotype	IgG
Label	Unconjugated
Immunogen	A synthesized peptide derived from human PICALM
Format	Affinity purified monoclonal antibody supplied in PBS with 0.01% sodium azide and 50% glycerol, pH 7.3.
Storage	Shipped on wet ice. Store at -20°C. Stable for 24 months from date of receipt. Aliquoting is unnecessary for -20°C storage.
Precautions	Anti-PICALM Rabbit mAb [23R67F04] is for research use only and not for use in diagnostic or therapeutic procedures.

Protein Information

Synonyms	CALM; Clathrin assembly lymphoid myeloid leukemia; Clathrin assembly lymphoid myeloid leukemia protein; CLTH; LAP; Phosphatidylinositol-binding clathrin assembly protein; PICAL_HUMAN; PICALM.
Calculated MW	Calculated MW: 71 kDa; Observed MW: 70-75 kDa
Uniprot ID	Q13492
Gene ID	8301
Background	This gene encodes a clathrin assembly protein, which recruits clathrin and adaptor protein complex 2 (AP2) to cell membranes at sites of coated-pit formation and clathrin-vesicle assembly. The protein may be required to determine the amount of membrane to be recycled, possibly by regulating the size of the clathrin cage. The protein is involved in AP2-dependent clathrin-mediated endocytosis at the neuromuscular junction. A chromosomal translocation t(10;11)(p13;q14) leading to the fusion of this gene and the MLLT10 gene is found in acute lymphoblastic leukemia, acute myeloid leukemia and malignant lymphomas. The polymorphisms of this gene are associated with the risk of Alzheimer disease. Multiple alternatively spliced transcript variants encoding different isoforms have been found for this gene. [provided by RefSeq, May 2011].
Cellular Location	Membrane > clathrin-coated pit. Golgi apparatus. Cytoplasmic vesicle > clathrin-coated vesicle. Colocalized with clathrin in the Golgi area.
Tissue Location	Expressed in all tissues examined.



Western Blot - Anti-PICALM Rabbit mAb [23R67F04]

All lanes: R015257 at 1:1,000 dilution

Lane 1: HeLa (Human cervix adenocarcinoma epithelial cell) whole cell lysates

Lane 2: HepG2 (Human hepatocarcinoma epithelial cell) whole cell lysates

Lane 3: HCT116 (Human colorectal carcinoma epithelial cell) whole cell lysates

Lane 4: SW620 (Human colorectal carcinoma epithelial cell) whole cell lysates

Lane 5: Caco2 (Human colorectal adenocarcinoma epithelial cell) whole cell lysates

Lane 6: Jurkat (Human T lymphocytic leukemia cell) whole cell lysates

Lane 7: 293T (Human embryonic kidney cell) whole cell lysates

Lane 8: SCC-9 (Human tongue squamous carcinoma epithelial cell) whole cell lysates

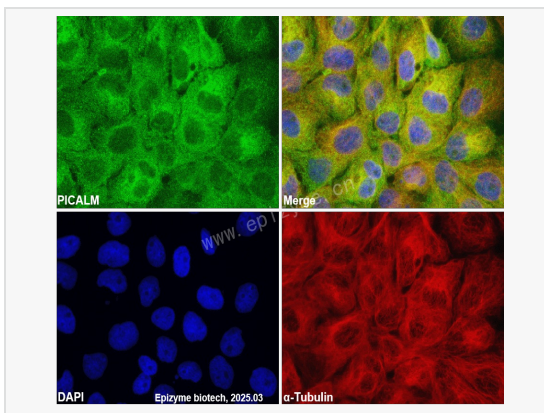
Lysates/proteins at 10 µg per lane.

Secondary antibody: Goat Anti-Rabbit IgG (H+L), HRP Conjugated (Cat. No. LF102) at 1:5,000 dilution

Predicted band size: 71 kDa

Observed band size: 70-75 kDa

Developed using the ECL technique (Cat. No. SQ201).



Immunofluorescence - Anti-PICALM Rabbit mAb [23R67F04]

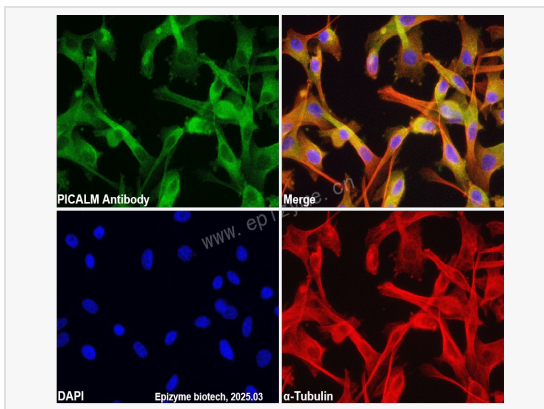
Sample: A431 cells

The cells were fixed with 4% paraformaldehyde (10 min), permeabilized with 0.5% Triton X-100 for 10 minutes and then blocked with 5% BSA in 0.1% PBS-Tween for 0.5 hours.

Primary antibodies: R015257 at 1:100 dilution and α -tubulin Mouse Monoclonal Antibody (Cat. No. LF209) at 1:100 dilution

Secondary antibodies: Goat anti-Rabbit (488) at 1:1,000 dilution (shown in green) and Goat anti-Mouse (555) at 1:1,000 dilution (shown in red)

Nuclei were stained with DAPI (shown in blue).



Immunofluorescence - Anti-PICALM Rabbit mAb [23R67F04]

Sample: U87MG cells

The cells were fixed with 4% paraformaldehyde (10 min), permeabilized with 0.5% Triton X-100 for 10 minutes and then blocked with 5% BSA in 0.1% PBS-Tween for 0.5 hours.

Primary antibodies: R015257 at 1:100 dilution and α -tubulin Mouse Monoclonal Antibody (Cat. No. LF209) at 1:100 dilution

Secondary antibodies: Goat anti-Rabbit (488) at 1:1,000 dilution (shown in green) and Goat anti-Mouse (555) at 1:1,000 dilution (shown in red)

Nuclei were stained with DAPI (shown in blue).