

Anti-CITED2 Rabbit mAb

Purified Recombinant Rabbit Monoclonal Antibody

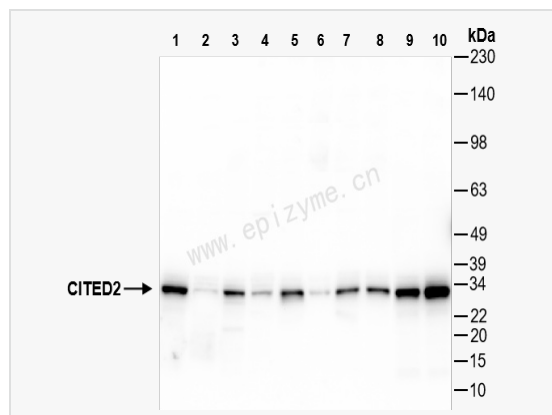
Catalog # R015254

Product Information

Application	WB, IF (Cell)/ICC, ELISA
Reactivity	Human, Mouse, Rat
Dilution	WB 1:1,000~1:2,000; IF 1:100~1:200
Host	Rabbit
Clonality	Monoclonal
Clone No.	70A08L89
Isotype	IgG
Label	Unconjugated
Immunogen	A synthesized peptide derived from human CITED2
Format	Affinity purified monoclonal antibody supplied in PBS with 0.01% sodium azide and 50% glycerol, pH 7.3.
Storage	Shipped on wet ice. Store at -20°C. Stable for 24 months from date of receipt. Aliquoting is unnecessary for -20°C storage.
Precautions	Anti-CITED2 Rabbit mAb [70A08L89] is for research use only and not for use in diagnostic or therapeutic procedures.

Protein Information

Synonyms	ASD8; Cbp/p300 interacting transactivator 2; Cbp/p300 interacting transactivator with Glu/Asp rich carboxy terminal domain 2; Cbp/p300-interacting transactivator 2; CITE2_HUMAN; CITED 2; CITED2; melanocyte-specific gene 1-related gene 1; MRG 1; MRG-1; MRG1; MSG related protein 1; MSG-related protein 1; MSG1-related gene 1; P35srj; VSD2.
Calculated MW	Calculated MW: 28 kDa; Observed MW: 28 kDa
Uniprot ID	Q99967
Gene ID	10370
Background	The protein encoded by this gene inhibits transactivation of HIF1A-induced genes by competing with binding of hypoxia-inducible factor 1-alpha to p300-CHI. Mutations in this gene are a cause of cardiac septal defects. Alternatively spliced transcript variants encoding multiple isoforms have been observed for this gene. [provided by RefSeq, May 2012]
Cellular Location	Nucleus.



Western Blot - Anti-CITED2 Rabbit mAb [70A08L89]

All lanes: R015254 at 1:1,000 dilution

Lane 1: HeLa (Human cervix adenocarcinoma epithelial cell) whole cell lysates

Lane 2: HepG2 (Human hepatocarcinoma epithelial cell) whole cell lysates

Lane 3: HCT116 (Human colorectal carcinoma epithelial cell) whole cell lysates

Lane 4: SW620 (Human colorectal carcinoma epithelial cell) whole cell lysates

Lane 5: Caco2 (Human colorectal adenocarcinoma epithelial cell) whole cell lysates

Lane 6: Jurkat (Human T lymphocytic leukemia cell) whole cell lysates

Lane 7: 293T (Human embryonic kidney cell) whole cell lysates

Lane 8: SCC-9 (Human tongue squamous carcinoma epithelial cell) whole cell lysates

Lane 9: Raw264.7 (Mouse mononuclear macrophage leukemia cell) whole cell lysates

Lane 10: PC-12 (Rat adrenal pheochromocytoma epithelial cell) whole cell lysates

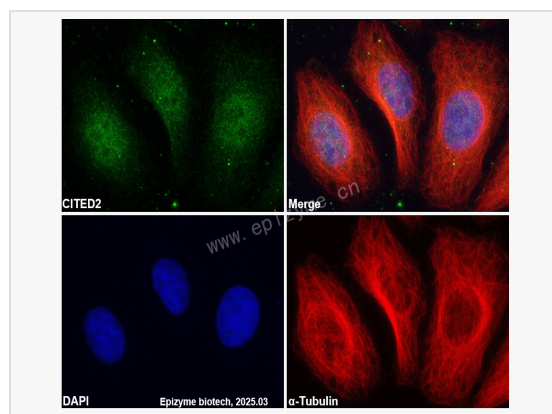
Lysates/proteins at 10 µg per lane.

Secondary antibody: Goat Anti-Rabbit IgG (H+L), HRP Conjugated (Cat. No. LF102) at 1:5,000 dilution

Predicted band size: 28 kDa

Observed band size: 28 kDa

Developed using the ECL technique (Cat. No. SQ201).



Immunofluorescence - Anti-CITED2 Rabbit mAb [70A08L89]

Sample: HeLa cells

The cells were fixed with 4% paraformaldehyde (10 min), permeabilized with 0.5% Triton X-100 for 10 minutes and then blocked with 5% BSA in 0.1% PBS-Tween for 0.5 hours.

Primary antibodies: R015254 at 1:100 dilution and α -tubulin Mouse Monoclonal

Antibody (Cat. No. LF209) at 1:100 dilution

Secondary antibodies: Goat anti-Rabbit (488) at 1:1,000 dilution (shown in green) and

Goat anti-Mouse (555) at 1:1,000 dilution (shown in red)

Nuclei were stained with DAPI (shown in blue).