

Anti-TMPRSS2 Rabbit mAb

Purified Recombinant Rabbit Monoclonal Antibody

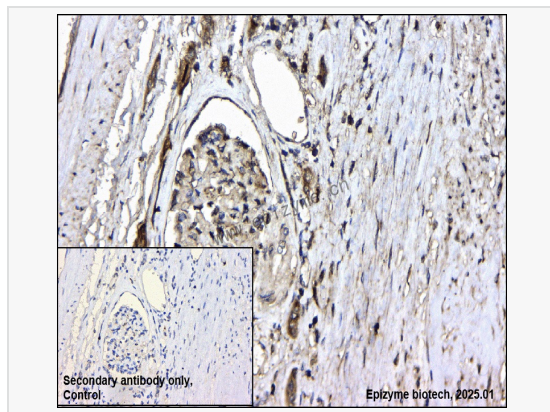
Catalog # R015246

Product Information

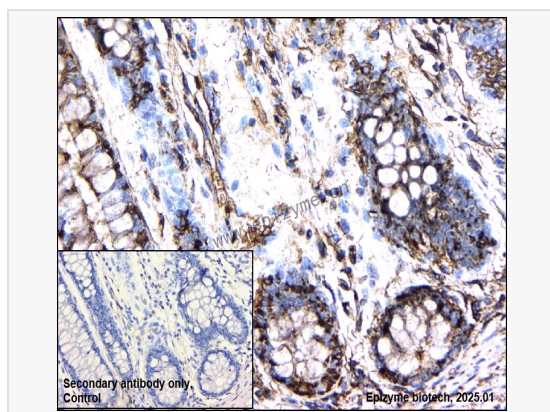
Application	WB, IHC-P/IF (Tissue-P), ELISA
Reactivity	Human
Dilution	WB 1:1,000~1:2,000; IHC-P 1:100~1:300; IF 1:100~1:200
Host	Rabbit
Clonality	Monoclonal
Clone No.	70D26N95
Isotype	IgG
Label	Unconjugated
Immunogen	A synthesized peptide derived from human TMPRSS2
Format	Affinity purified monoclonal antibody supplied in PBS with 0.01% sodium azide and 50% glycerol, pH 7.3.
Storage	Shipped on wet ice. Store at -20°C. Stable for 24 months from date of receipt. Aliquoting is unnecessary for -20°C storage.
Precautions	Anti-TMPRSS2 Rabbit mAb [70D26N95] is for research use only and not for use in diagnostic or therapeutic procedures.

Protein Information

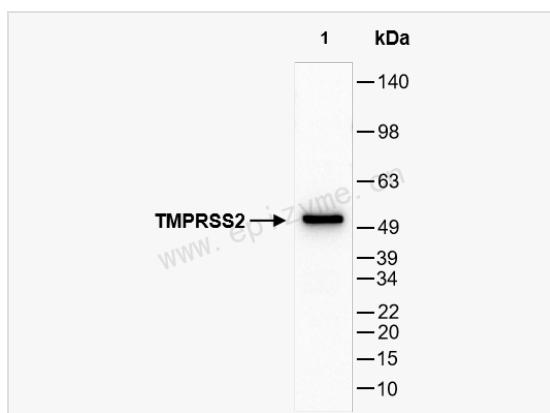
Synonyms	D16Ert61e; Epitheliasin; FLJ41954; MGC6821; PP9284; PRSS10; Serine protease 10; TMPRSS2; TMPRSS2 ERG FUSION GENE, INCLUDED; TMPRSS2 ETV1 FUSION GENE, INCLUDED; TMPS2_HUMAN; Transmembrane protease serine 2 catalytic chain; Transmembrane protease, serine 2; Transmembrane protease, serine 2, EC 3.4.219.
Calculated MW	Calculated MW: 54 kDa; Observed MW: 54 kDa
Uniprot ID	O15393
Gene ID	7113
Background	This gene encodes a protein that belongs to the serine protease family. The encoded protein contains a type II transmembrane domain, a receptor class A domain, a scavenger receptor cysteine-rich domain and a protease domain. Serine proteases are known to be involved in many physiological and pathological processes. This gene was demonstrated to be up-regulated by androgenic hormones in prostate cancer cells and down-regulated in androgen-independent prostate cancer tissue. The protease domain of this protein is thought to be cleaved and secreted into cell media after autocleavage. Alternatively spliced transcript variants encoding different isoforms have been found for this gene. [provided by RefSeq, Sep 2008]
Cellular Location	Cell membrane and Secreted. Activated by cleavage and secreted.
Tissue Location	Expressed strongly in small intestine. Also expressed in prostate, colon, stomach and salivary gland.



Immunohistochemistry - Anti-TMPRSS2 Rabbit mAb [70D26N95]
 Sample: Paraformaldehyde-fixed, paraffin embedded human renal carcinoma tissue
 Heat mediated antigen retrieval with Tris-EDTA buffer (pH 9.0) for 30 mins.
 Primary antibody: R015246 at 1:300 dilution
 Secondary antibody: Goat Anti-Rabbit IgG (H+L), HRP conjugated at 1:1,000 dilution
 DAB was used as the chromogen.
 Counter stained with hematoxylin.
 Positive/negative staining were presented.
 Only the secondary antibody was used as the negative control.



Immunohistochemistry - Anti-TMPRSS2 Rabbit mAb [70D26N95]
 Sample: Paraformaldehyde-fixed, paraffin embedded human rectal adenocarcinoma tissue
 Heat mediated antigen retrieval with Tris-EDTA buffer (pH 9.0) for 30 mins.
 Primary antibody: R015246 at 1:300 dilution
 Secondary antibody: Goat Anti-Rabbit IgG (H+L), HRP conjugated at 1:1,000 dilution
 DAB was used as the chromogen.
 Counter stained with hematoxylin.
 Positive/negative staining were presented.
 Only the secondary antibody was used as the negative control.



Western Blot - Anti-TMPRSS2 Rabbit mAb [70D26N95]
 All lanes: R015246 at 1:1,000 dilution
 Lane 1: U2OS (Human osteosarcoma epithelial cell) whole cell lysates
 Lysates/proteins at 10 µg per lane.
 Secondary antibody: Goat Anti-Rabbit IgG (H+L), HRP Conjugated (Cat. No. LF102) at 1:5,000 dilution
 Predicted band size: 54 kDa
 Observed band size: 54 kDa
 Developed using the ECL technique (Cat. No. SQ201).