

Anti-MTCO2 Rabbit mAb

Purified Recombinant Rabbit Monoclonal Antibody

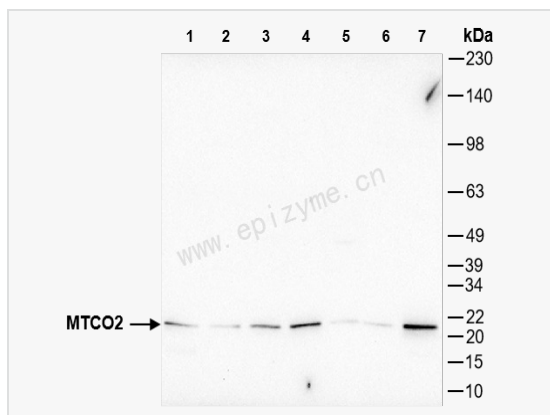
Catalog # R015230

Product Information

Application	WB, IHC-P/IF (Tissue-P), ELISA
Reactivity	Human
Dilution	WB 1:1,000~1:5,000; IHC-P 1:200~1:1,000; IF 1:100~1:500
Host	Rabbit
Clonality	Monoclonal
Clone No.	71Q50D00
Isotype	IgG
Label	Unconjugated
Immunogen	Recombinant protein of human MTCO2
Format	Affinity purified monoclonal antibody supplied in PBS with 0.01% sodium azide and 50% glycerol, pH 7.3.
Storage	Shipped on wet ice. Store at -20°C. Stable for 24 months from date of receipt. Aliquoting is unnecessary for -20°C storage.
Precautions	Anti-MTCO2 Rabbit mAb [71Q50D00] is for research use only and not for use in diagnostic or therapeutic procedures.

Protein Information

Synonyms	COII; COX 2; COX II; COX2; COX2_HUMAN; COXII; Cytochrome c oxidase II; Cytochrome c oxidase polypeptide II; Cytochrome c oxidase subunit 2; MT CO2; MT-CO2; MTCO2.
Calculated MW	Calculated MW: 26 kDa; Observed MW: 21 kDa
Uniprot ID	P00403
Gene ID	4513
Background	Cytochrome c oxidase is the component of the respiratory chain that catalyzes the reduction of oxygen to water. Subunits 1-3 form the functional core of the enzyme complex. Subunit 2 transfers the electrons from cytochrome c via its binuclear copper A center to the bimetallic center of the catalytic subunit 1.
Cellular Location	Mitochondrion inner membrane.



Western Blot - Anti-MTCO2 Rabbit mAb [71Q50D00]

All lanes: R015230 at 1:3,000 dilution

Lane 1: HeLa (Human cervix adenocarcinoma epithelial cell) whole cell lysates

Lane 2: HepG2 (Human hepatocarcinoma epithelial cell) whole cell lysates

Lane 3: HCT116 (Human colorectal carcinoma epithelial cell) whole cell lysates

Lane 4: SW620 (Human colorectal carcinoma epithelial cell) whole cell lysates

Lane 5: Caco2 (Human colorectal adenocarcinoma epithelial cell) whole cell lysates

Lane 6: 293T (Human embryonic kidney cell) whole cell lysates

Lane 7: SCC-9 (Human tongue squamous carcinoma epithelial cell) whole cell lysates

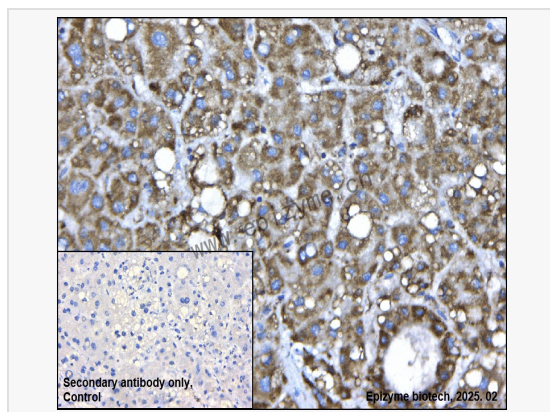
Lysates/proteins at 10 µg per lane.

Secondary antibody: Goat Anti-Rabbit IgG (H+L), HRP Conjugated (Cat. No. LF102) at 1:5,000 dilution

Predicted band size: 26 kDa

Observed band size: 21 kDa

Developed using the ECL technique (Cat. No. SQ201).



Immunohistochemistry - Anti-MTCO2 Rabbit mAb [71Q50D00]

Sample: Paraformaldehyde-fixed, paraffin embedded human hepatoma tissue

Heat mediated antigen retrieval with Tris-EDTA buffer (pH 9.0) for 30 mins.

Primary antibody: R015230 at 1:600 dilution

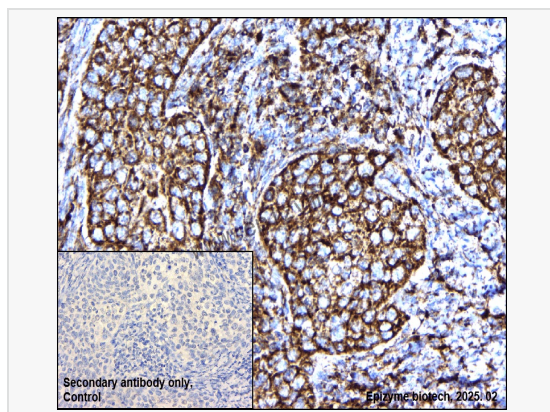
Secondary antibody: Goat Anti-Rabbit IgG (H+L), HRP conjugated at 1:1,000 dilution

DAB was used as the chromogen.

Counter stained with hematoxylin.

Positive/negative staining were presented.

Only the secondary antibody was used as the negative control.



Immunohistochemistry - Anti-MTCO2 Rabbit mAb [71Q50D00]

Sample: Paraformaldehyde-fixed, paraffin embedded human cervical cancer tissue

Heat mediated antigen retrieval with Tris-EDTA buffer (pH 9.0) for 30 mins.

Primary antibody: R015230 at 1:600 dilution

Secondary antibody: Goat Anti-Rabbit IgG (H+L), HRP conjugated at 1:1,000 dilution

DAB was used as the chromogen.

Counter stained with hematoxylin.

Positive/negative staining were presented.

Only the secondary antibody was used as the negative control.