

PE Mouse Anti-Human CD25

Purified PE-conjugated Recombinant Mouse Monoclonal Antibody

Catalog # F100708

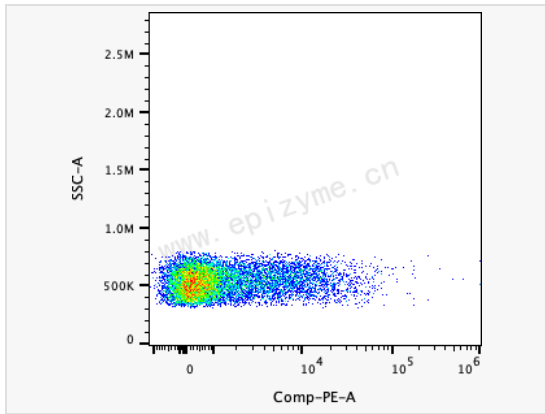
Product Information

Application	FC
Recommended Usage	5 μ L per million cells in 100 μ L staining volume or 5 μ L per 100 μ L of whole blood.
Reactivity	Human
Host	Mouse
Clonality	Monoclonal
Clone No.	84R97B13
Isotype	IgG1, κ
Label	PE (Ex/Em: 565/574 nm)
Immunogen	Recombinant protein of human CD25
Format	Phosphate-buffered solution, pH 7.2, containing 0.09% sodium azide and 0.2% (w/v) BSA.
Storage	Shipped on wet ice. Store undiluted between 2°C and 8°C and protected from prolonged exposure to light. Do not freeze.
Precautions	PE Mouse Anti-Human CD25 [84R97B13] is for research use only and not for use in diagnostic or therapeutic procedures.

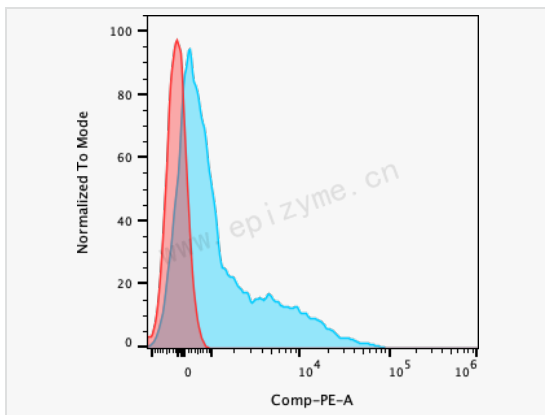
Protein Information

Synonyms	Interleukin 2 receptor alpha chain, CD25, CD25 antigen, IDDM10, IL 2 receptor alpha subunit, IL-2 receptor subunit alpha, IL-2-RA, IL-2R subunit alpha, IL2 RA, IL2 Receptor alpha, IL2-RA, IL2R, IL2R, alpha chain, IL2RA, IL2RA_HUMAN, IMD41, Interleukin 2 receptor alpha, Interleukin 2 receptor, Interleukin-2 receptor subunit alpha, p55, t-cell growth factor receptor, TAC, TAC antigen, TCGFR.
Uniprot ID	P01589
Gene ID	3559
Background	CD25 is a 55 kD type I transmembrane glycoprotein also known as the low affinity IL-2 receptor α chain or Tac. It is expressed on progenitor lymphocytes, activated T and B cells, and activated monocytes/macrophages. CD25 is also expressed on a subset of non-stimulated CD4+ T cells termed T regulatory cells. CD25 associates with the IL-2 receptor β (CD122) and common γ chains (CD132) to form the high affinity IL-2R complex.
Cellular Location	Membrane.

Validation Images



Human peripheral blood lymphocytes were stained with PE Mouse Anti-Human CD25 [84R97B13].



Human peripheral blood lymphocytes were stained with PE Mouse Anti-Human CD25 [84R97B13], Blue histogram. Un-stained control is Pink histogram.